

## STRAIGHT GRINDING WHEELS

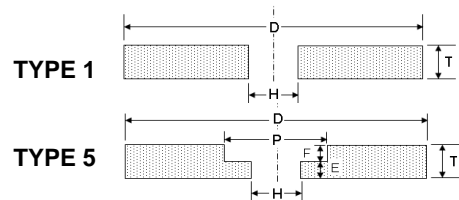
## ALUMINIUM OXIDE

PART NO.	TYPE	SIZE (mm)	GRADE	MAX RPM	QTY/BOX
GW2160	T1	75 x 13 x 12.7	A46MV	8,275	10
GW2201	T1	100 x 13 x 12.7	A60MV	6,300	10
GW2270	T1	125 x 13 x 12.7	A46MV	5,000	10
GW2410	T1	150 x 20 x 25.4	A36PV	4,200	5
GW2415	T1	150 x 20 x 25.4	A46MV	4,200	5
GW2420	T1	150 x 20 x 25.4	A60MV	4,200	5
GW2485	T1	150 x 25 x 25.4	A36PV	4,200	5
GW2480	T1	150 x 25 x 25.4	A46MV	4,200	5
GW2475	T1	150 x 25 x 25.4	A60MV	4,200	5
GW2740	T1	200 x 25 x 25.4	A24QV	3,200	5
GW2745	T1	200 x 25 x 25.4	A36PV	3,200	5
GW2750	T1	200 x 25 x 25.4	A46MV	3,200	5
GW2755	T1	200 x 25 x 25.4	A60MV	3,200	5
GW2756	T1	200 x 25 x 25.4	A80MV	3,200	5
GW2890	T1	200 x 40 x 25.4	A36PV	3,200	2
GW2895	T1	200 x 40 x 25.4	A46MV	3,200	2
GW2900	T1	200 x 40 x 25.4	A60MV	3,200	2
GW3061	T1	250 x 25 x 31.75	A24QV	2,850	2
GW3066	T1	250 x 25 x 31.75	A36PV	2,850	2
GW3071	T1	250 x 25 x 31.75	A46MV	2,850	2
GW3076	T1	250 x 25 x 31.75	A60MV	2,850	2
GW3060	T1	250 x 40 x 38.1	A24QV	2,850	2
GW3065	T1	250 x 40 x 38.1	A36PV	2,850	2
GW3070	T1	250 x 40 x 38.1	A46MV	2,850	2
GW3075	T1	250 x 40 x 38.1	A60MV	2,850	2
GW3165	T1	300 x 40 x 38.1	A24QV	2,100	2
GW3170	T1	300 x 40 x 38.1	A36PV	2,100	2
GW3175	T1	300 x 40 x 38.1	A46MV	2,100	2
GW3180	T1	300 x 40 x 38.1	A60MV	2,100	2
GW3205	T1	300 x 50 x 50.8	A24QV	2,100	2
GW3210	T1	300 x 50 x 50.8	A36PV	2,100	2
GW3215	T1	300 x 50 x 50.8	A46MV	2,100	2
GW3220	T1	300 x 50 x 50.8	A60MV	2,100	2
GW3280	T1	350 x 50 x 50.8	A24QV	1,800	1
GW3285	T1	350 x 50 x 50.8	A36PV	1,800	1
GW3290	T1	350 x 50 x 50.8	A46MV	1,800	1
GW3295	T1	350 x 50 x 50.8	A60MV	1,800	1
GW3335	T1	400 x 50 x 50.8	A24QV	1,600	1
GW3341	T1	400 x 50 x 50.8	A36PV	1,600	1
GW3345	T1	400 x 50 x 50.8	A46MV	1,600	1
GW3355	T1	400 x 80 x 50.8	A24QV	1,600	1
GW3365	T1	400 x 80 x 50.8	A46MV	1,600	1
GW3375	T1	450 x 50 x 50.8	A24QV	1,400	1
GW3380	T1	450 x 50 x 50.8	A46MV	1,400	1
GW3385	T1	450 x 80 x 50.8	A24QV	1,400	1
GW3390	T1	450 x 80 x 50.8	A46MV	1,400	1

## RECESSED GRINDING WHEELS

## ALUMINIUM OXIDE

PART NO.	TYPE	SIZE (mm)	RIM x BACK	GRADE	MAX RPM	QTY/BOX
GW2910	T5	200 x 40 x 25.4	120 x 20	A46MV	3,200	2
GW2915	T5	200 x 40 x 25.4	120 x 20	A60MV	3,200	2



## General Purpose Wheels

### STRAIGHT GRINDING WHEELS - FOR GRINDING TUNGSTEN CARBIDE

PART NO.	TYPE	SIZE (mm)	GRADE	MAX RPM	QTY/BOX
GW2166	T1	75 x 13 x 12.7	39C60LV	8,275	5
GW2196	T1	100 x 13 x 12.7	39C60LV	6,300	5
GW2275	T1	125 x 13 x 12.7	39C60LV	5,000	5
GW2385	T1	150 x 13 x 31.75	39C60LV	4,200	5
GW2425	T1	150 x 20 x 25.4	39C60KV	4,200	5
GW2430	T1	150 x 20 x 25.4	39C100JV	4,200	5
GW2490	T1	150 x 25 x 25.4	39C60KV	4,200	5
GW2492	T1	150 x 25 x 25.4	39C80JV	4,200	5
GW2495	T1	150 x 25 x 25.4	39C100JV	4,200	5
GW2570	T1	180 x 13 x 31.75	39C60KV	3,500	5
GW2760	T1	200 x 25 x 25.4	39C46JV	3,200	5
GW2766	T1	200 x 25 x 31.75	39C60KV	3,200	5
GW2765	T1	200 x 25 x 25.4	39C60L	3,200	5
GW2770	T1	200 x 25 x 25.4	39C80J	3,200	5
GW2775	T1	200 x 25 x 25.4	39C100J	3,200	5
GW3016	T1	250 x 25 x 76.2	39C46L6	2,850	1
GW3243	T1	350 x 25 x 127	39C60J6	1,800	1

### RECESSED GRINDING WHEELS - FOR TUNGSTEN CARBIDE

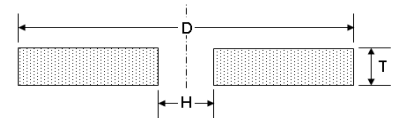
PART NO.	TYPE	SIZE (mm)	RIM x BACK	GRADE	MAX RPM	QTY/BOX
GW2880	T5	200 x 40 x 25.4	120 x 20	39C60K	3,200	2
GW2882	T5	200 x 40 x 25.4	120 x 20	39C80J	3,200	2
GW2883	T5	200 x 40 x 25.4	120 x 20	39C100J	3,200	2
GW3046	T5	250 x 40 x 38.1	125 x 20	39C60L	2,850	1

### STRAIGHT WHEELS - FOR LAPIDARY GRINDING

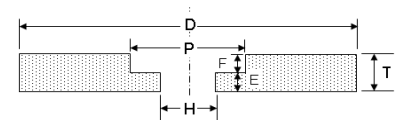
PART NO.	TYPE	SIZE (mm)	GRADE	MAX RPM	QTY/BOX
GW2764	T1	200 x 25 x 25.4	39C100L	3,200	5
GW2787	T1	200 x 25 x 25.4	37C220J	3,200	5

### STRAIGHT WHEELS - FOR NON-FERROUS METAL

PART NO.	TYPE	SIZE (mm)	GRADE	MAX RPM	QTY/BOX
GW3270	T1	350 x 50 x 50.8	C24RV	1,800	1



TYPE 1



TYPE 5

## Specialist Grinding Wheels

### STRAIGHT WHEELS - MINING INDUSTRY

PART NO.	TYPE	SIZE (mm)	GRADE	MAX RPM	QTY/BOX
GW3137	T1	300 x 20 x 31.75	39C54MV	2,100	5
GW3133	T1	300 x 25 x 32	39C54P4V	2,100	5
GW3134	T1	300 x 29 x 32	76C54V	2,100	5
GW3136	T1	300 x 29 x 32	39C54P4V	2,100	5
GW3225	T1	300 x 50 x 50.8	39C60LV	2,100	2
GW3245	T1	350 x 17.5 x 152.4	39C54PV	1,800	4
GW3276	T1	350 x 50 x 50.8	76C60NV	1,800	1

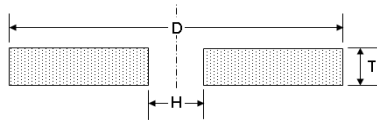
### STRAIGHT CUP WHEELS - FOR MINING INDUSTRY

PART NO.	TYPE	SIZE (mm)	RIM x BACK	GRADE	MAX RPM	QTY/BOX
CW4120	T6	125 x 63 x 32mm T6	25 x 16	39C46PV	4,600	10

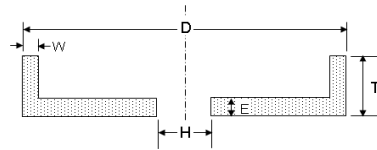


### STRAIGHT CUP WHEELS - FOR AUTOMOTIVE RECONDITIONING

PART NO.	TYPE	SIZE (mm)	RIM x BACK	GRADE	MAX RPM	QTY/BOX
CW3235	T6	300 x 100 x 214.3	25 x 25	AA30JB	2,400	1



TYPE 1



TYPE 6

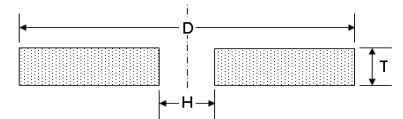
## Toolroom Grinding

### STRAIGHT WHEELS - FOR GRINDING TOOL STEEL

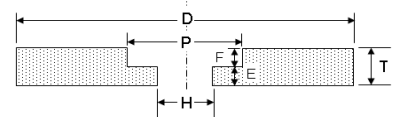
PART NO.	TYPE	SIZE (mm)	GRADE	MAX RPM	QTY/BOX
GW2203	T1	100 x 13 x 12.7	9A60JV	6,200	5
GW2280	T1	125 x 13 x 12.7	9A60LV	5,000	5
GW2330	T1	150 x 6 x 31.75	9A60LV	4,200	5
GW2345	T1	150 x 6 x 31.75	9A120JV	4,200	5
GW2365	T1	150 x 13 x 31.75	9A46KV	4,200	5
GW2370	T1	150 x 13 x 31.75	9A60KV	4,200	5
GW2375	T1	150 x 13 x 31.75	9A80KV	4,200	5
GW2435	T1	150 x 20 x 31.75	9A60LV	4,200	5
GW2565	T1	180 x 13 x 31.75	9A46KV	3,500	5
GW2540	T1	180 x 13 x 31.75	9A60KV	3,500	5
GW2625	T1	200 x 6 x 31.75	9A60LV	3,200	5
GW2660	T1	200 x 13 x 31.75	9A46KV	3,200	5
GW2665	T1	200 x 13 x 31.75	9A60KV	3,200	5
GW2705	T1	200 x 20 x 50.8	9A46KV	3,200	5
GW2700	T1	200 x 20 x 50.8	9A60KV	3,200	5
GW3015	T1	250 x 25 x 76.2	9A46KV	2,500	1
GW3021	T1	250 x 25 x 76.2	9A60KV	2,500	1
GW3155	T1	300 x 25 x 127	9A46KV	2,100	1
GW3160	T1	300 x 25 x 127	9A60JV	2,100	1
GW3145	T1	300 x 32 x 76.2	9A46KV	2,100	1
GW3150	T1	300 x 32 x 76.2	9A60JV	2,100	1
GW3297	T1	350 x 25 x 127	9A46JV	1,800	1
GW3298	T1	350 x 25 x 127	9A60JV	1,800	1
GW3348	T1	400 x 50 x 127	9A60KV	1,600	1

### RECESSED WHEELS - FOR GRINDING TOOL STEEL

PART NO.	TYPE	SIZE (mm)	RIM x BACK	GRADE	MAX RPM	QTY/BOX
GW3185	T5	300 x 40 x 127	200 x 13	9A60KV	2,100	1
GW3186	T5	300 x 40 x 127	200 x 13	9A46KV	2,100	1
GW3301	T5	350 x 40 x 127	200 x 13	9A46KV	1,800	1
GW3302	T5	350 x 40 x 127	200 x 13	9A60KV	1,800	1
GW3304	T5	350 x 50 x 127	200 x 13	32A/9A60L8V	1,800	1
GW3350	T5	400 x 50 x 203.2	265 x 25	9A60KV	1,600	1



TYPE 1



TYPE 5

## Toolroom Grinding

### STRAIGHT BENCH GRINDING WHEELS - FOR GRINDING TOOL STEEL

PART NO.	TYPE	SIZE (mm)	GRADE	MAX RPM	QTY/BOX
GW2500	T1	150 x 25 x 25.4	9A46KV	4,200	5
GW2505	T1	150 x 25 x 25.4	9A60KV	4,200	5
GW2506	T1	150 x 25 x 25.4	9A80LV	4,200	5
GW2508	T1	150 x 25 x 25.4	9A120JV	4,200	5
GW2800	T1	200 x 25 x 25.4	9A46KV	3,200	5
GW2805	T1	200 x 25 x 25.4	9A60KV	3,200	5
GW2806	T1	200 x 25 x 25.4	9A80KV	3,200	5
GW2807	T1	200 x 25 x 25.4	9A120JV	3,200	5
GW3014	T1	250 x 25 x 31.75	9A60KV	2,850	1

### STRAIGHT BENCH GRINDING WHEELS - FOR GRINDING TOOL STEEL

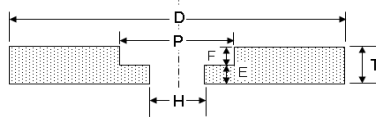
PART NO.	TYPE	SIZE (mm)	GRADE	MAX RPM	QTY/BOX
GW2510	T1	150 x 25 x 25.4	RA60KV	4,200	5
GW2512	T1	150 x 25 x 25.4	RA80KV	4,200	5
GW2810	T1	200 x 25 x 25.4	RA60KV	3,200	5
GW2812	T1	200 x 25 x 25.4	RA80KV	3,200	5

### RECESSED BENCH GRINDING WHEELS - FOR GRINDING TOOL STEEL

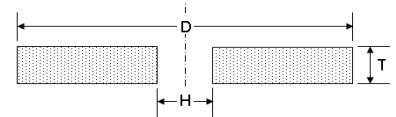
PART NO.	TYPE	SIZE (mm)	RECESS	GRADE	MAX RPM	QTY/BOX
GW2840	T5	200 x 40 x 25.4	120 x 20	9A46KV	3,200	1
GW2845	T5	200 x 40 x 25.4	120 x 20	9A60KV	3,200	1
GW2850	T5	201 x 40 x 25.4	120 x 20	9A80KV	3,200	1

### RECESSED BENCH GRINDING WHEELS - FOR GRINDING TOOL STEEL

PART NO.	TYPE	SIZE (mm)	RECESS	GRADE	MAX RPM	QTY/BOX
GW2855	T5	200 x 40 x 25.4	120 x 20	RA60KV	3,200	1
GW2857	T5	200 x 40 x 25.4	120 x 20	RA80KV	3,200	1



TYPE 5



TYPE 1

## Cylindrical Grinding Wheels

### STRAIGHT WHEELS - FOR GRINDING TOOL, STEEL & CHROME

PART NO.	TYPE	SIZE (mm)	GRADE	MAX RPM	QTY/BOX
GW3255	T1	350 x 25 x 127	RA60K5V	1,800	1
GW3404	T1	500 x 50 x 203.2	57A60K8V	1,300	1
GW3405	T1	500 x 50 x 203.2	RA60K5V	1,300	1
GW3456	T1	600 x 76 x 254	RA60K5V	1,100	1

### RECESSED WHEELS - FOR GRINDING TOOL, STEEL & CHROME

PART NO.	TYPE	SIZE (mm)	RECESS	GRADE	MAX RPM	QTY/BOX
GW3304	T5	350 x 50 x 127	200 x 13	32A/9A60L8V	1,600	1
GW3460	T5	760 x 50 x 304.8	450 x 13	PA60K6V	890	1

### STRAIGHT WHEELS - FOR GRINDING HARDENED STEEL

PART NO.	TYPE	SIZE (mm)	GRADE	MAX RPM	QTY/BOX
GW3308	T1	350 x 40 x 127	57A60K6V	1,600	1
GW3406	T1	500 x 50 x 254	DA60L6V	1,300	1

## Toolroom Wheels

### STRAIGHT CUP WHEELS

PART NO.	TYPE	SIZE (mm)	RIM x BACK	GRADE	MAX RPM	QTY/BOX
CW4055	T6	100 x 50 x 31.75	13 x 13	39C60KV	5,700	6
CW4060	T6	100 x 50 x 31.75	13 x 13	9A46KV	5,700	6
CW4065	T6	100 x 50 x 31.75	13 x 13	9A60KV	5,700	6
CW4114	T6	125 x 50 x 31.75	13 x 13	9A46KV	4,600	6
CW4115	T6	125 x 40 x 31.75	13 x 10	32A46I12VP	4,600	6
CW4116	T6	125 x 40 x 31.75	13 x 10	1SWA46I12V	4,600	6
CW4122	T6	125 x 63 x 31.75	13 x 16	9A46I12VP	4,600	5
CW4170	T6	150 x 50 x 31.75	13 x 13	9A46KV	3,800	5
CW4171	T6	150 x 50 x 31.75	13 x 13	PA46J10VP	3,800	5
CW4175	T6	150 x 50 x 31.75	13 x 13	9A60KV	3,800	5
CW4178	T6	150 x 50 x 31.75	13 x 13	39C60KV	3,800	4
CW4179	T6	150 x 63 x 31.75	13 x 16	9A46I12VP	3,800	4
CW4200	T6	180 x 80 x 82.6	16 x 20	WA54KB	3,200	2
CW4202	T6	180 x 80 x 76.2	16 x 20	WA54KB	3,200	2
CW4204	T6	180 x 80 x 82.6	16 x 20	9A46I12VP	3,200	2

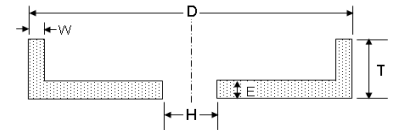
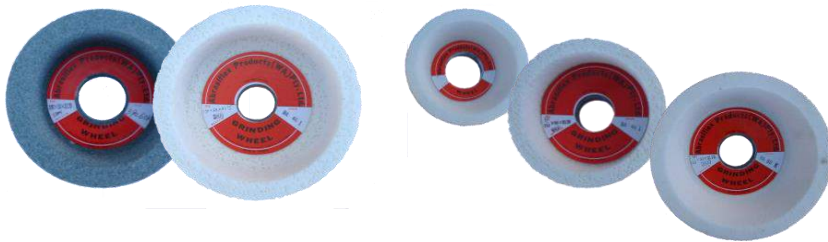
### FLARED CUP WHEELS

PART NO.	TYPE	SIZE (mm)	RIM x BACK	GRADE	MAX RPM	QTY/BOX
CW4006	T11	89/70 x 40 x 31.75	10 x 10	9A46KV	6,550	6
CW4010	T11	89/70 x 40 x 31.75	10 x 10	9A60KV	6,550	6
CW4015	T11	100/75 x 40 x 31.75	10 x 10	39C46KV	5,700	6
CW4020	T11	100/75 x 40 x 31.75	10 x 10	39C60KV	5,700	6
CW4032	T11	100/75 x 40 x 31.75	10 x 10	3SWA60JV	5,700	6
CW4033	T11	100/75 x 40 x 31.75	10 x 10	3SWA46J	5,700	6
CW4030	T11	100/75 x 40 x 31.75	10 x 10	9A46KV	5,700	6
CW4035	T11	100/75 x 40 x 31.75	10 x 10	9A60KV	5,700	6
CW4031	T11	100/75 x 40 x 31.75	10 x 10	PA46KV	5,700	6
CW4036	T11	100/75 x 40 x 31.75	10 x 10	PA60JV	5,700	6
CW4038	T11	125/108 x 63 x 31.75	13 x 16	9A46I12PV	4,600	5
CW4039	T11	125/108 x 63 x 31.75	13 x 16	37C36LVP	4,600	5
CW4040	T11	150/119 x 50 x 31.75	13 x 13	9A60KV	3,800	2
CW4041	T11	150/119 x 50 x 31.75	13 x 13	9A46KV	3,800	2
CW4042	T11	150/119 x 50 x 31.75	13 x 13	PA46J10VP	3,800	2
CW4177	T11	150/119 x 50 x 31.75	13 x 13	39C46JV	3,800	2
CW4190	T11	150/119 x 63 x 31.75	13 x 16	37C30L10VP	3,800	2
CW4050	T11	178/125 x 50 x 31.75	16 x 13	PA46JVP	3,200	2

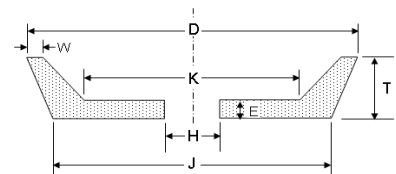
PA = PINK ALUMINIUM OXIDE  
 CX = CERAMIC  
 32A = MONO CRYSTAL ALOX

9A / WA = WHITE ALUMINIUM OXIDE  
 39C = GREEN SILICON CARBIDE  
 37C = BLACK SILICON CARBIDE

P = OPEN POROUS  
 3S = SUPER ABRASIVE CERAMIC



TYPE 6



TYPE 11

## Toolroom Wheels

### DISH WHEELS - FOR GRINDING TOOL STEEL

PART NO.	TYPE	SIZE (mm)	GRADE	MAX RPM	QTY/BOX
GW2205	T12	100 x 13 x 19.05	9A60KV	5,700	5
GW2391	T12	150 x 13 x 31.75	9A60KV	3,800	5
GW2445	T12	150 x 20 x 31.75	9A60KV	3,800	5
GW2446	T12	150 x 20 x 31.75	9A46KV	3,800	5

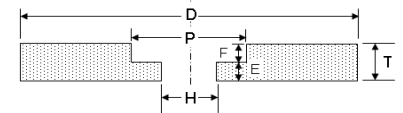
### INTERNAL WHEELS - FOR HARDENED STEEL

PART NO.	TYPE	SIZE (mm)	RIM x BACK	GRADE	MAX RPM	QTY/BOX
GW2005	T5	13 x 13 x 4	6 x 6	WA60KV	34,500	25
GW2017	T5	25 x 25 x 9.53	13 x 12	9A60LV	33,000	10
GW2020	T5	25 x 25 x 9.53	13 x 12	64A46JV	33,000	10
GW2046	T5	40 x 25 x 12.7	20 x 12	64A46JV	21,600	10
GW2050	T5	40 x 25 x 12.7	20 x 12	9A60KV	21,600	10
GW2103	T5	50 x 25 x 12.7	25 x 12	PA60KV	16,500	10
GW2104	T5	50 x 25 x 12.7	25 x 12	DA60KV	16,500	10

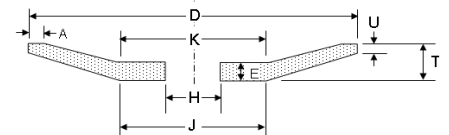
PA = PINK ALUMINIUM OXIDE  
 CX = CERAMIC  
 64A = 9A + A + COBALT

9A / WA = WHITE ALUMINIUM OXIDE  
 39C = GREEN SILICON CARBIDE  
 DA = 9A + COBALT

P = OPEN POROUS  
 3S = SUPER ABRASIVE CERAMIC



TYPE 5



TYPE 12

## Ceramic Grinding Wheels

### STRAIGHT WHEELS - FOR SPECIALIST STEELS

PART NO.	TYPE	SIZE (mm)	GRADE	MAX RPM	QTY/BOX
GW2360	T1	150 x 13 x 31.75	1SWA46JVP	4,200	1
GW2580	T1	180 x 13 x 31.75	3CX46JVP	3,500	1
GW2550	T1	180 x 13 x 31.75	3SWA46JV	3,500	1
GW2576	T1	180 x 13 x 31.75	3CX60JVP	3,500	1
GW2590	T1	180 x 20 x 31.75	1SWA60J9V96	3,500	1
GW2595	T1	180 x 20 x 31.75	1SWA46J9V96	3,500	1
GW2655	T1	200 x 13 x 31.75	3CX46JV	3,200	1
GW2664	T1	200 x 13 x 31.75	3CX60JVP	3,200	1
GW2704	T1	200 x 20 x 31.75	3CX46JVP	3,200	1
GW2701	T1	200 x 20 x 31.75	3SWA60JV	3,200	1
GW3025	T1	250 x 25 x 76.2	3CX36I10VP	2,500	1
GW3020	T1	250 x 25 x 76.2	3CX46JVP	2,500	1
GW3012	T1	250 x 25 x 76.2	3SWA36I8V	2,500	1

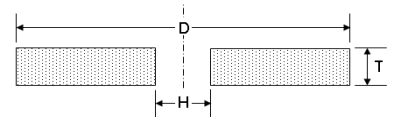
### RECESSED WHEELS - FOR SPECIALIST STEELS

PART NO.	TYPE	SIZE (mm)	RIM x RECESS	GRADE	MAX RPM	QTY/BOX
GW3187	T5	300 x 40 x 127	200 x 13	3SWA46JVP	2,100	1
GW3184	T5	300 x 40 x 127	200 x 13	3SWA60JV	2,100	1
GW3305	T5	350 x 40 x 127	200 x 13	3CX46IV	1,800	1
GW3306	T5	350 x 40 x 127	200 x 13	3SWA60IV	1,800	1
GW3307	T5	350 x 40 x 127	200 x 13	3SWA46JV	1,800	1

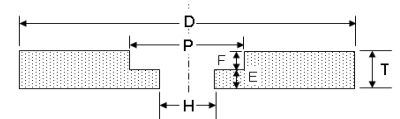
CX = CERAMIC

P = OPEN POROUS

SWA = SUPER ABRASIVE CERAMIC



TYPE 1



TYPE 5