



Sola 5 Inlet Valve Assembly



Product Features

The PanBlast™ Sola 5 Inlet Valve Assembly combines a piston type inlet valve to control supply air for smaller blast pots. The BSP configuration is compatible with most non-U.S. pressure blasting equipment.

- ▶ Fast, positive inlet valve actuation.
- ▶ Anodized internal valve surfaces.
- ▶ Simple maintenance.
- ▶ Parts and service kits available.
- ▶ 13 mm (1/2") BSP threads.

Common Applications

- ▶ Blast room, yard and on site operations.
- ▶ Remote control for low capacity blast pots.

Complementary Products



Moisture Separator



QuikStop IIS Pneumatic Handle



AirFlo Pneumatic Handle



Twinline Hose



Pop Up Valves



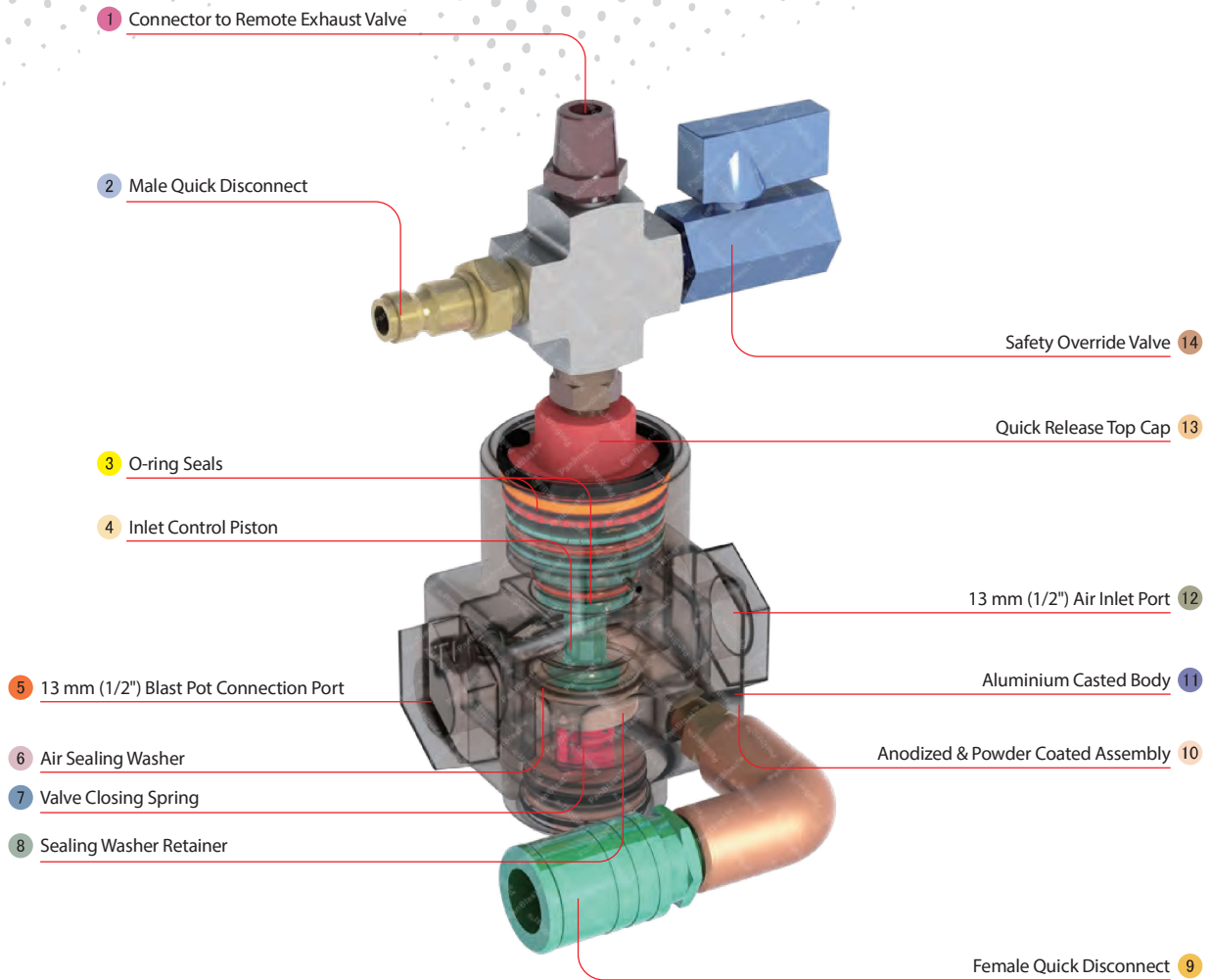
Sola 5 Exhaust Valve



Junior Plana Valve



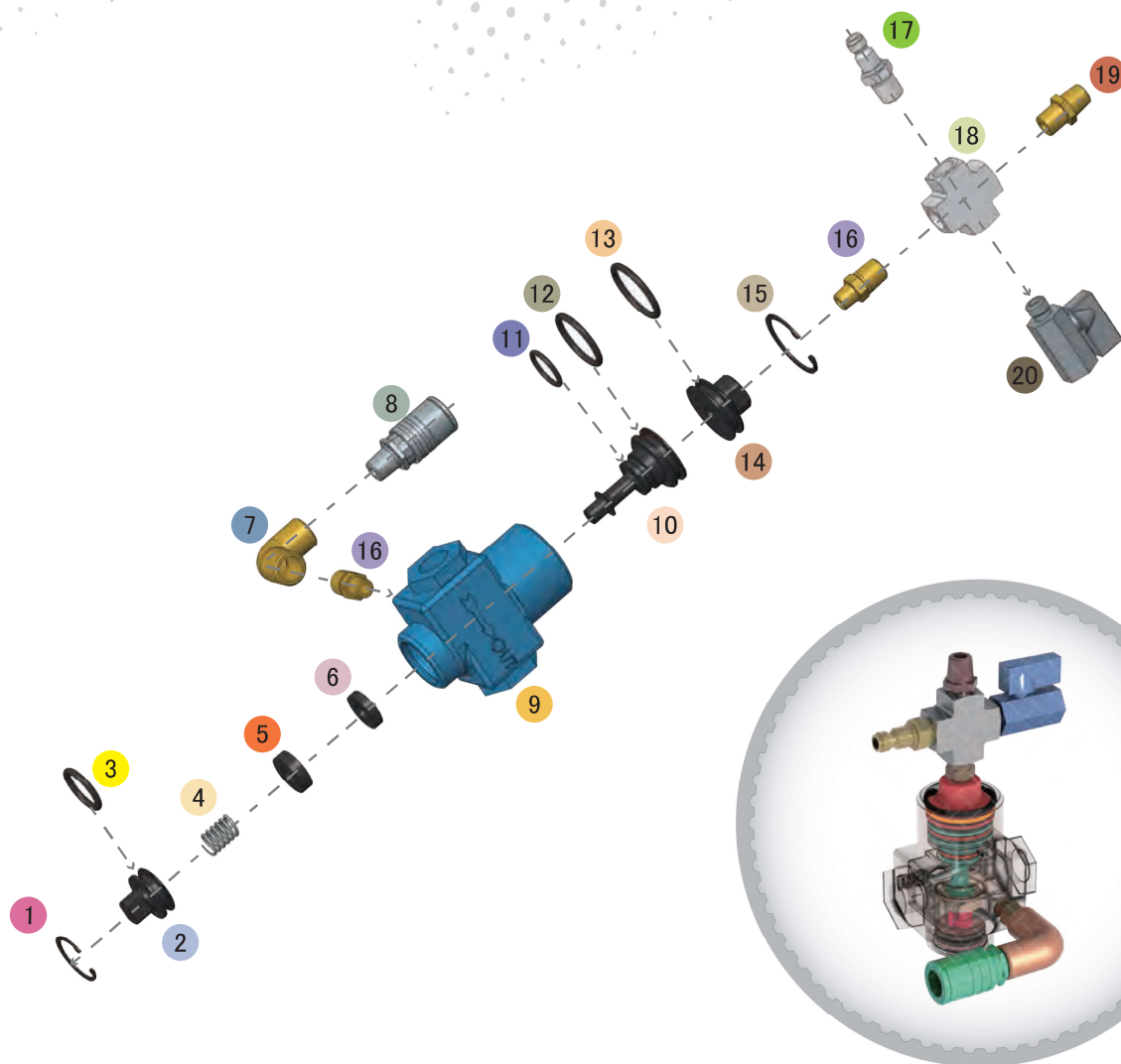
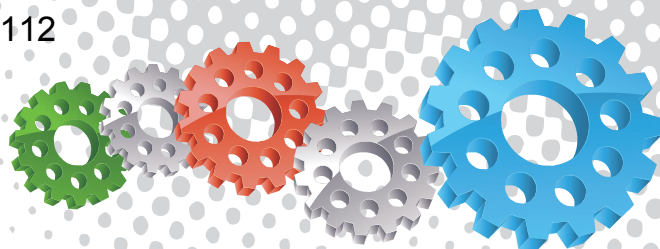
Exhaust Muffler



Component Highlights



- | | | |
|--|--------------------------------------|--------------------------------|
| 1 Connector to Remote Exhaust Valve | 6 Air Sealing Washer | 11 Aluminium Casted Body |
| 2 Male Quick Disconnect | 7 Valve Closing Spring | 12 13 mm (1/2") Air Inlet Port |
| 3 O-ring Seals | 8 Sealing Washer Retainer | 13 Quick Release Top Cap |
| 4 Inlet Control Piston | 9 Female Quick Disconnect | 14 Safety Override Valve |
| 5 13 mm (1/2") Blast Pot Connection Port | 10 Anodized & Powder Coated Assembly | |



Assembly

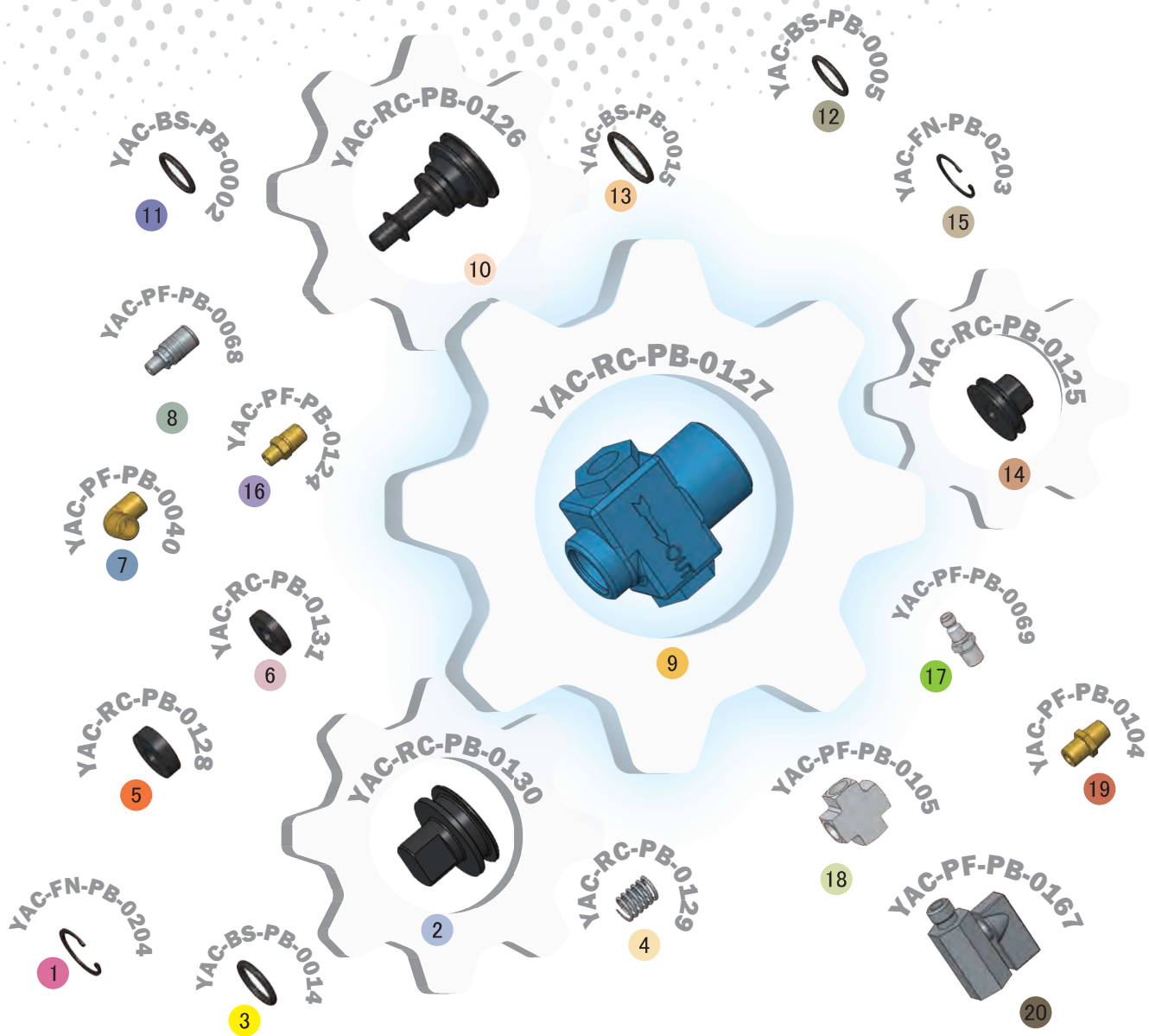
| Stock Code | Description | Weight |
|----------------|-----------------------------|--------------------|
| BAC-RC-PB-0017 | Sola 5 Inlet Valve Assembly | 0.67 kg (1.48 lbs) |

Service Kits

| Stock Code | Description | Include Items |
|----------------|---------------------|-----------------------|
| BAC-RC-PB-0006 | Sola 5 Seal Kit | 1 3 4 5 6 11 12 13 15 |
| BAC-RC-PB-0007 | Sola 5 Fittings Kit | 7 8 16 x2 17 18 19 20 |
| BAC-RC-PB-0008 | Sola 5 Piston Kit | 1 2 5 10 14 15 |



All data and information subject to change without prior notice. Brochure reference CAT-0201-01-00



Parts List



| Description | Qty | Description | Qty | Description | Qty |
|-----------------|-----|-----------------------------------|-----|----------------------------------|-----|
| 1 Circlip | 1 | 8 Quick Disconnect Fitting Female | 1 | 15 Circlip | 1 |
| 2 Bottom Plug | 1 | 9 Body | 1 | 16 Reducing Nipple | 2 |
| 3 O-ring | 1 | 10 Inlet Piston | 1 | 17 Quick Disconnect Fitting Male | 1 |
| 4 Spring | 1 | 11 O-ring | 1 | 18 Cross | 1 |
| 5 Retainer | 1 | 12 O-ring | 1 | 19 Nipple | 1 |
| 6 Rubber Washer | 1 | 13 O-ring | 1 | 20 Mini Ball Valve | 1 |
| 7 Elbow | 1 | 14 Cap | 1 | | |