



## Sola 30 NPT Inlet Valve Assembly



### Product Features

The PanBlast™ Sola 30 NPT Inlet Valve Assembly is an air actuated inlet control valve, designed for use in conjunction with the PanBlast™ HiFlo Exhaust Control Valve or similar device. The NPT configuration is compatible with most U.S. blasting equipment.

- ▶ Simple, rugged construction.
- ▶ Normally closed operation.
- ▶ Interchangeable with OEM valves.
- ▶ Quick, easy disassembly.
- ▶ Service kits available.
- ▶ 38 mm (1-1/2") NPT threaded connection.

### Common Applications

- ▶ Remote supply air control for medium capacity blast pots
- ▶ Replacement and upgrade of OEM valves.

## Complementary Products



HiFlo Exhaust Valve



QuikStop IIS Pneumatic Handle



AirFlo Pneumatic Handle



Twinline Hose



AbraFlo Abrasive Trap



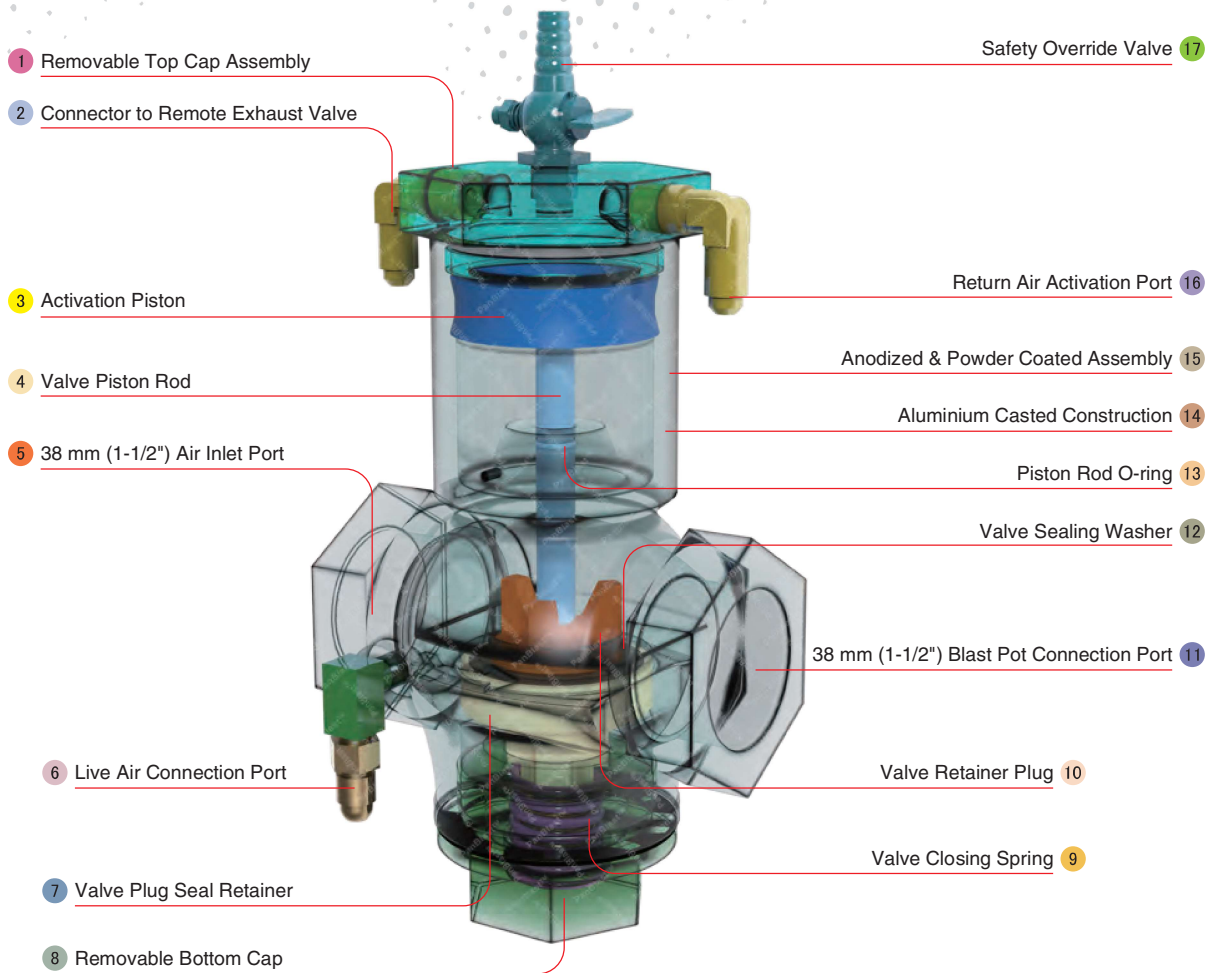
Moisture Separator



AirFlo Electric Handle



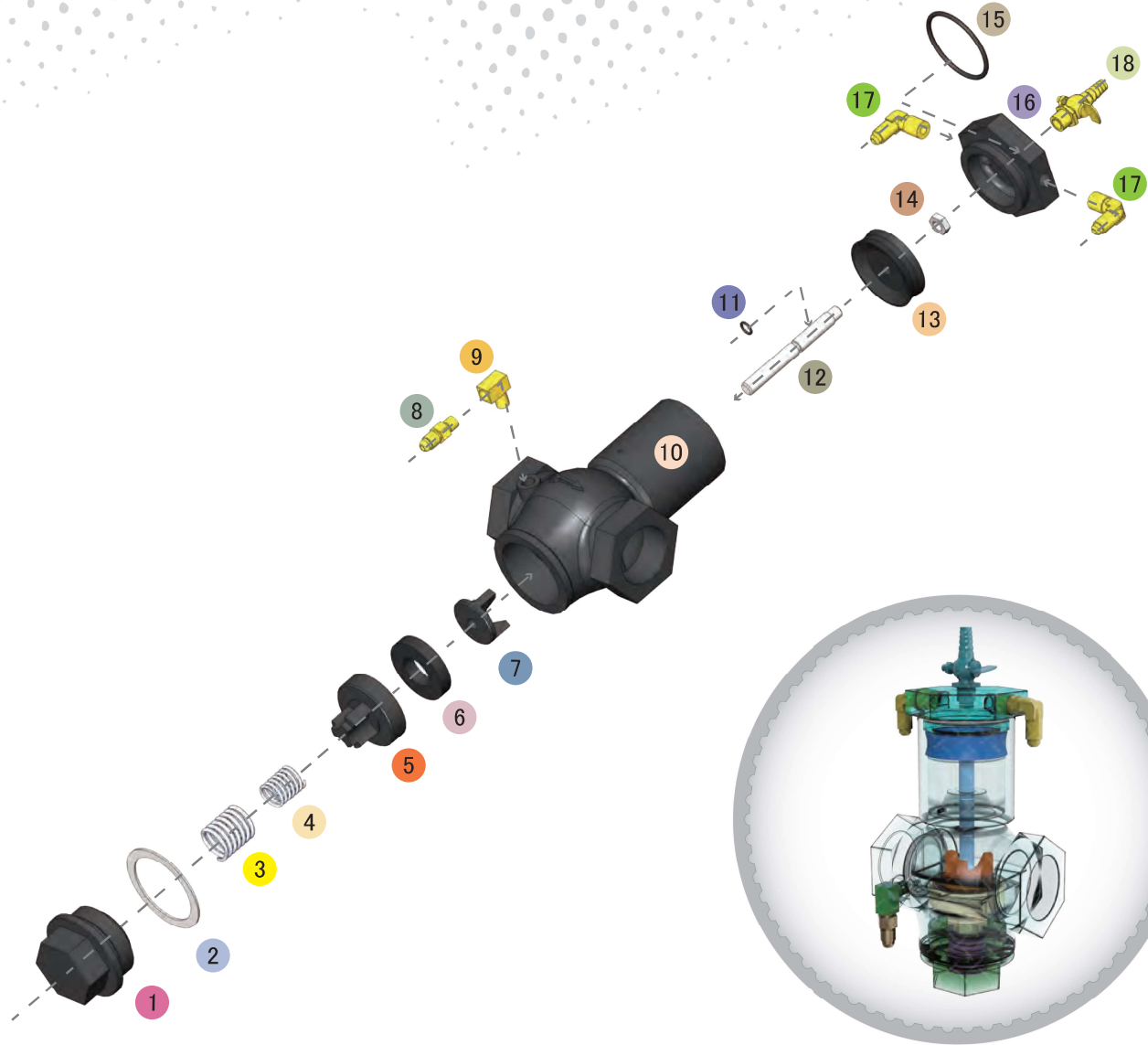
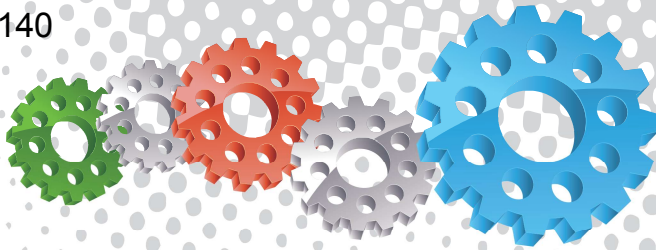
Pop Up Valves



## Component Highlights



- |                                     |   |                                      |
|-------------------------------------|---|--------------------------------------|
| 1 Removable Top Cap Assembly        | 7 Valve Plug Seal Retainer                  | 13 Piston Rod O-ring                 |
| 2 Connector to Remote Exhaust Valve | 8 Removable Bottom Cap                      | 14 Aluminium Casted Construction     |
| 3 Activation Piston                 | 9 Valve Closing Spring                      | 15 Anodized & Powder Coated Assembly |
| 4 Valve Piston Rod                  | 10 Valve Retainer Plug                      | 16 Return Air Activation Port        |
| 5 38 mm (1-1/2") Air Inlet Port     | 11 38 mm (1-1/2") Blast Pot Connection Port | 17 Safety Override Valve             |
| 6 Live Air Connection Port          | 12 Valve Sealing Washer                     |                                      |



## Assembly

Stock Code	Description	Weight
BAC-RC-PB-0221	Sola 30 NPT Inlet Valve Assembly	1.96 kg (4.31 lbs)

## Service Kits

Stock Code	Description	Include Items
BAC-RC-PB-0258	Sola 30 NPT Inlet Valve Service Kit	2 3 4 6 7 11 15
BAC-RC-PB-0355	Sola 30 Piston Kit	11 12 13 14



All data and information subject to change without prior notice. Brochure reference CAT-0201-08-00



## Parts List



Description	Qty	Description	Qty	Description	Qty
1 Bottom Cap	1	7 Retainer Plug	1	13 Rubber Piston	1
2 Bottom Cap Gasket	1	8 NPT/UNF Nipple - Restricted	1	14 Nut	1
3 Outer Spring	1	9 Elbow - NPT	1	15 O-ring	1
4 Inner Spring	1	10 Body	1	16 Cap	1
5 Valve Plug	1	11 O-ring	1	17 Elbow	2
6 Plug Washer	1	12 Piston Rod	1	18 Pet Cock - NPT	1