



1-1/4" Tandem NPT Valve Assembly



Product Features

The PanBlast™ 1-1/4" Tandem NPT Valve Assembly is a pilot operated, spring return diaphragm type valve for use with remote control systems on pressure hold and multiple outlet blast pots. The valve is normally located on the air pusher line to control the blasting air, and can be combined with an abrasive control valve to provide air blow down. The NPT configuration is compatible with most U.S. blasting equipment.

- ▶ Rugged, cast iron construction.
- ▶ Quick, easy dismantled for cleaning and maintenance.
- ▶ Service kit available.
- ▶ 32 mm (1-1/4") NPT threads.

Common Applications

- ▶ Remote control for pressure hold blast pots.
- ▶ Multiple operator remote control.
- ▶ Air blow down for component cleanup.

Complementary Products



AirStop Pneumatic Handle



Twinline Hose



AirStop II Pneumatic Handle



AirStop II Electric Handle



AirStop Electric Handle



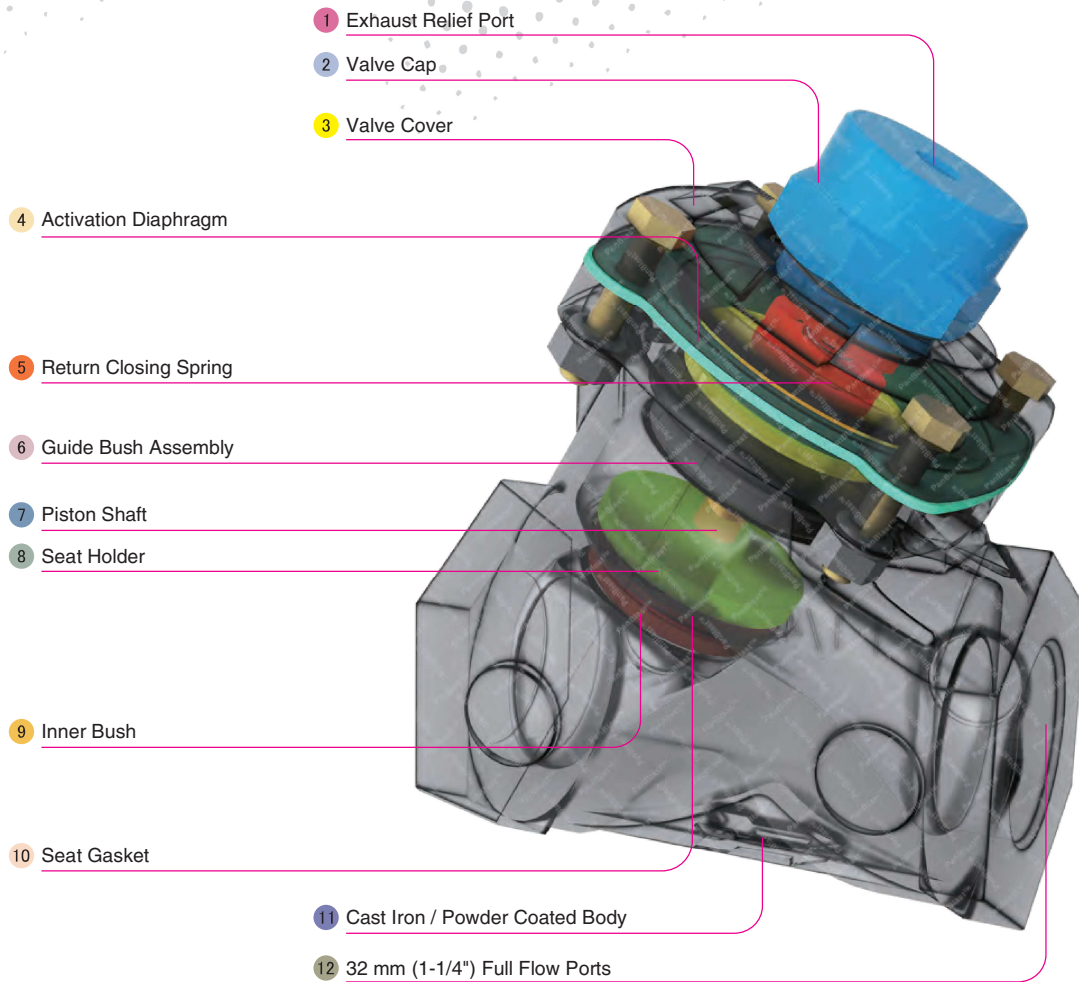
AirStop IV Pneumatic Handle



Exhaust Muffler



Pop Up Valves



Component Highlights



1 Exhaust Relief Port

2 Valve Cap

3 Valve Cover

4 Activation Diaphragm

5 Return Closing Spring

6 Guide Bush Assembly

7 Piston Shaft

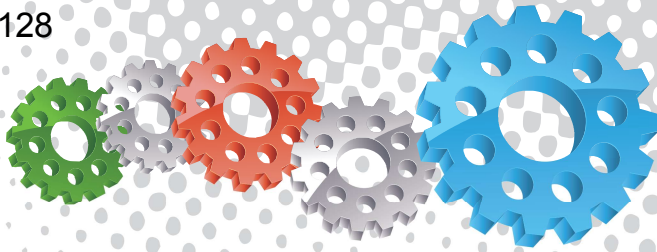
8 Seat Holder

9 Inner Bush

10 Seat Gasket

11 Cast Iron / Powder Coated Body

12 32 mm (1-1/4") Full Flow Ports



Assembly

| Stock Code | Description | Weight |
|----------------|----------------------------------|--------------------|
| BAC-RC-PB-0276 | 1-1/4" Tandem NPT Valve Assembly | 3.75 kg (8.27 lbs) |

Service Kits

| Stock Code | Description | Include Items |
|----------------|--|---|
| BAC-RC-PB-0279 | 1-1/4" & 1-1/2" Tandem Valve Service Kit | 2, 4, 5 x2, 7, 9, 10, 12, 14, 16, 18 |
| BAC-RC-0536-00 | Tandem Valve 1-1/4" & 1-1/2" Repair Kit | 2, 6, 7, 10, 11, 12 x3, 14, 15, 18, 20 x4 |



All data and information subject to change without prior notice. Brochure reference CAT-0201-05-00



Parts List



| Description | Qty | Description | Qty | Description | Qty |
|---------------|-----|---------------------|-----|------------------|-----|
| 1 Cap | 1 | 9 O-ring | 1 | 17 Inner Bush | 1 |
| 2 O-ring | 1 | 10 O-ring | 1 | 18 O-ring | 1 |
| 3 Cover | 1 | 11 Connecting Shaft | 1 | 19 Body | 1 |
| 4 Lock Nut | 1 | 12 Flat Washer | 1 | 20 Spring Washer | 4 |
| 5 Flat Washer | 2 | 13 Gasket Holder | 1 | 21 Nut | 4 |
| 6 Flat Washer | 2 | 14 Rubber Gasket | 1 | 22 Screw | 4 |
| 7 Diaphragm | 1 | 15 Retainer | 1 | 23 Spring | 1 |
| 8 Guide Bush | 1 | 16 Lock Nut | 1 | | |