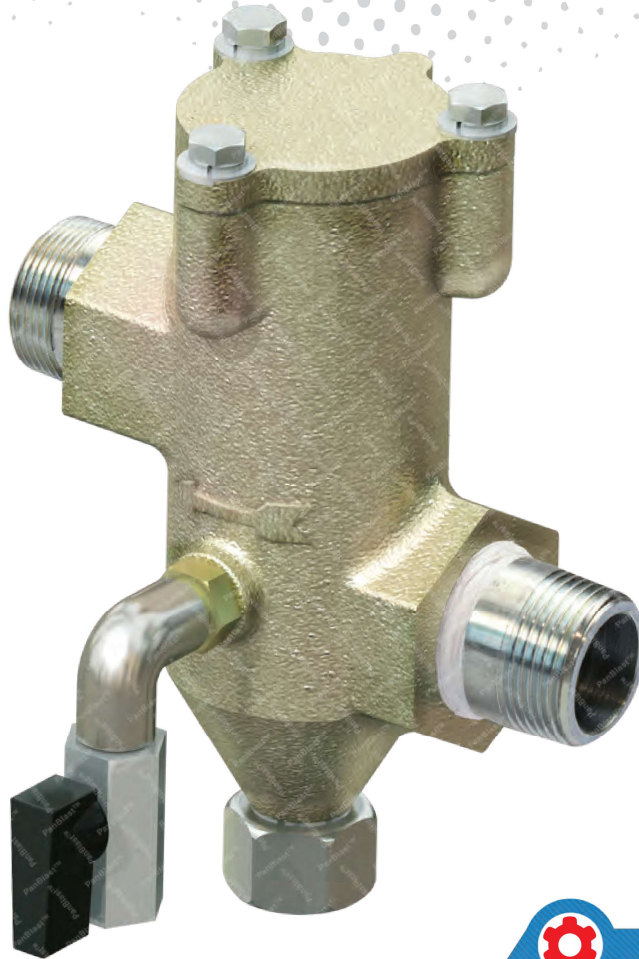




AbraFlo Abrasive Trap II Assembly



Product Features

The PanBlast™ AbraFlo Abrasive Trap II Assembly uses cyclonic action and an abrasive screen to trap any abrasive particles in the blast pot exhaust stream. This greatly reduces wear on the exhaust valve and exhaust muffler and reduces the risk of operator injury from airborne abrasive particles. The NPT configuration is compatible with most U.S. blasting equipment.

- ▶ Lower storage hopper.
- ▶ Quick release drain port.
- ▶ Quick release cap for screen changes and maintenance.
- ▶ Blow down valve on lower chamber for quick purging.
- ▶ 25 mm (1") NPT threaded connections.

Common Applications

- ▶ Protection of blasting personnel.
- ▶ Life extension of blast pot exhaust valves.

Complementary Products



Sola 5 Inlet Valve



Helix 50 Outlet Valve



Diaphragm Dump Valve



HiFlo Exhaust Valve



Sola 10 Inlet Valve



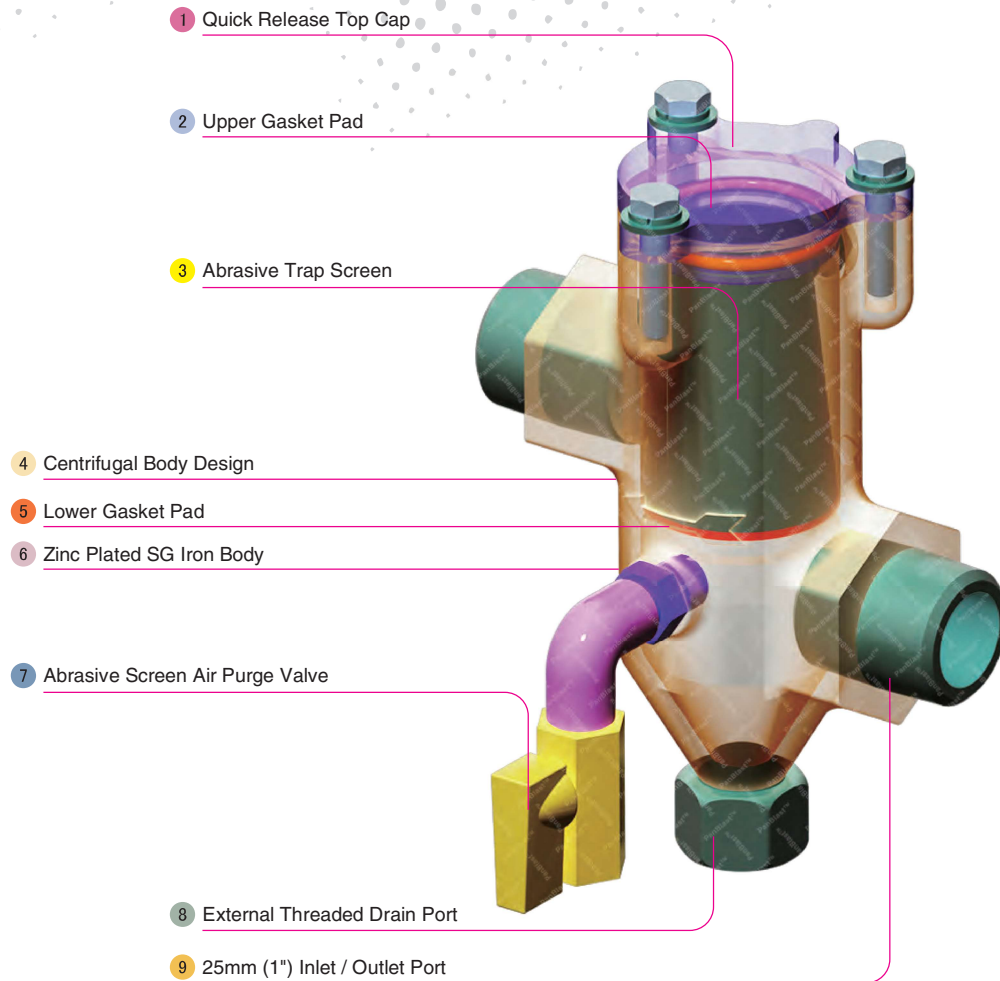
Sola 30 Inlet Valve



Exhaust Muffler



Helix 150 Remote Valve



Component Highlights



1 Quick Release Top Cap

4 Centrifugal Body Design

7 Abrasive Screen Air Purge Valve

2 Upper Gasket Pad

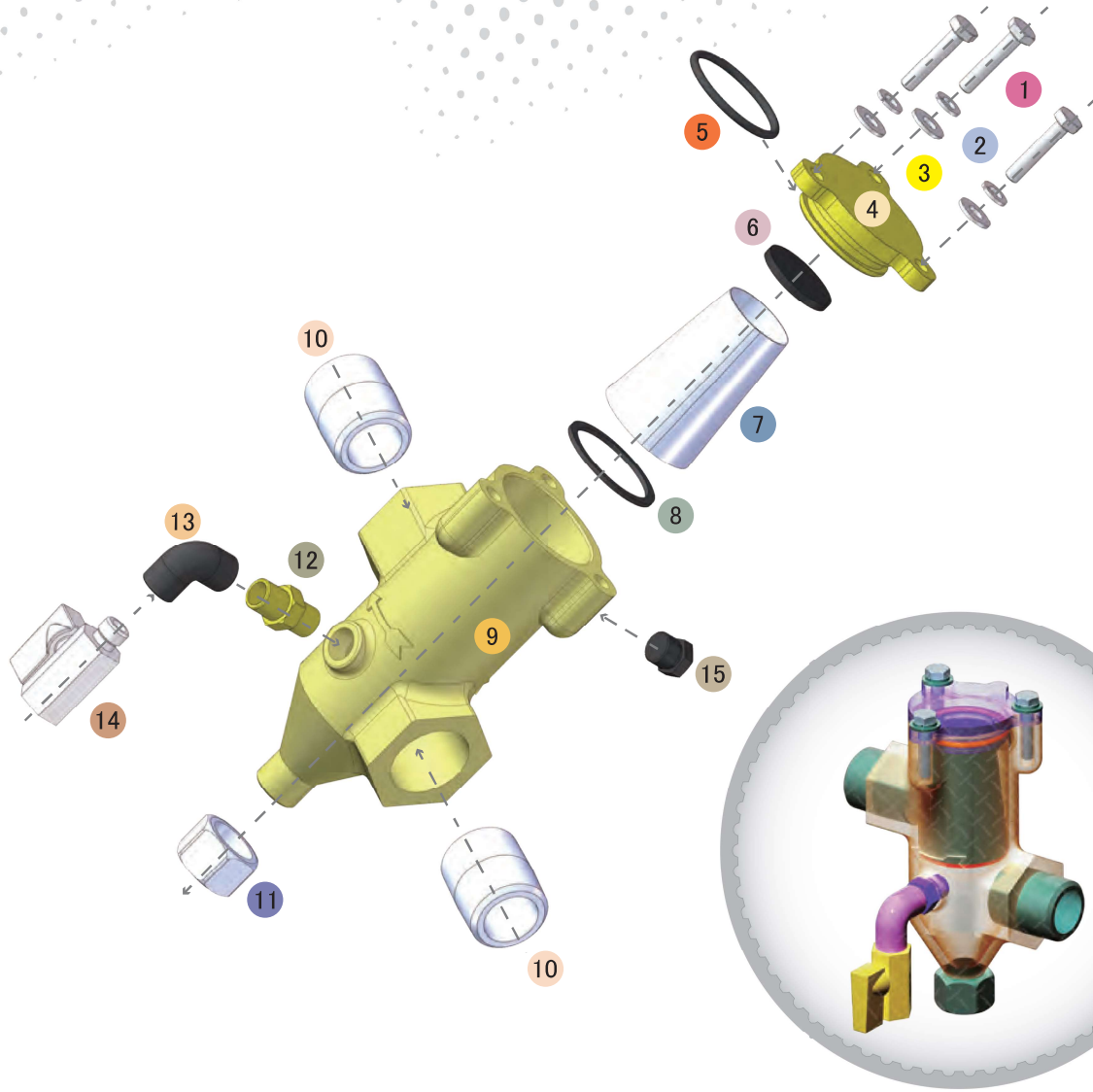
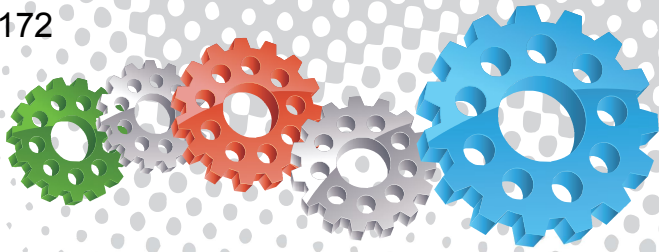
5 Lower Gasket Pad

8 External Threaded Drain Port

3 Abrasive Trap Screen

6 Zinc Plated SG Iron Body

9 25 mm (1") Inlet / Outlet Port



Assembly

Stock Code	Description	Weight
BAC-VA-0353-00	AbraFlo NPT Abrasive Trap II Assembly	1.7 kg (3.75 lbs)



All data and information subject to change without prior notice. Brochure reference CAT-0202-06-01



Parts List



Description	Qty	Description	Qty	Description	Qty
1 Screw	3	6 Rubber Pad	1	11 NPT Cap – Stainless Steel	1
2 Spring Washer	3	7 Abrasives Trap Screen	1	12 Nipple	1
3 Flat Washer	3	8 Screen Gasket	1	13 NPT Elbow – Stainless Steel	1
4 Cap	1	9 Body	1	14 Mini Ball Valve	1
5 O-Ring	1	10 Thread Sleeve	2	15 Hex Plug	1