



Extended ProFlo Recycling System



Product Features

The PanBlast™ Extended ProFlo Abrasive Recycling System is a manually loaded abrasive cleaning system combining an air wash stage with a screening system, and a storage hopper for recycled abrasive media. The system is designed for use with a single pressure blast pot.

- ▶ Fully adjustable abrasive air wash system removes dust.
- ▶ Simple, efficient bucket elevator system.
- ▶ Single cartridge dry dust collection system with reverse pulse cartridge purging.
- ▶ 240 Volt single-phase electrical power.
- ▶ Cleans garnet abrasive at 3,000 kg (6,600 lbs) per hour.
- ▶ Compatible with most commercial abrasive types.
- ▶ Recycled abrasive media hopper with 320 litres (11.3 ft³) storage capacity.
- ▶ Optional stabilizer bars available for the elevator base plate frame.

Common Applications

- ▶ Extend recyclable abrasive life.
- ▶ Reduce operating costs.

Complementary Products



Pressure Blast Pots



Pow Air Vac



PBF Filter Cartridge



Cosmo SAR



PBF II-3 Airline Filter



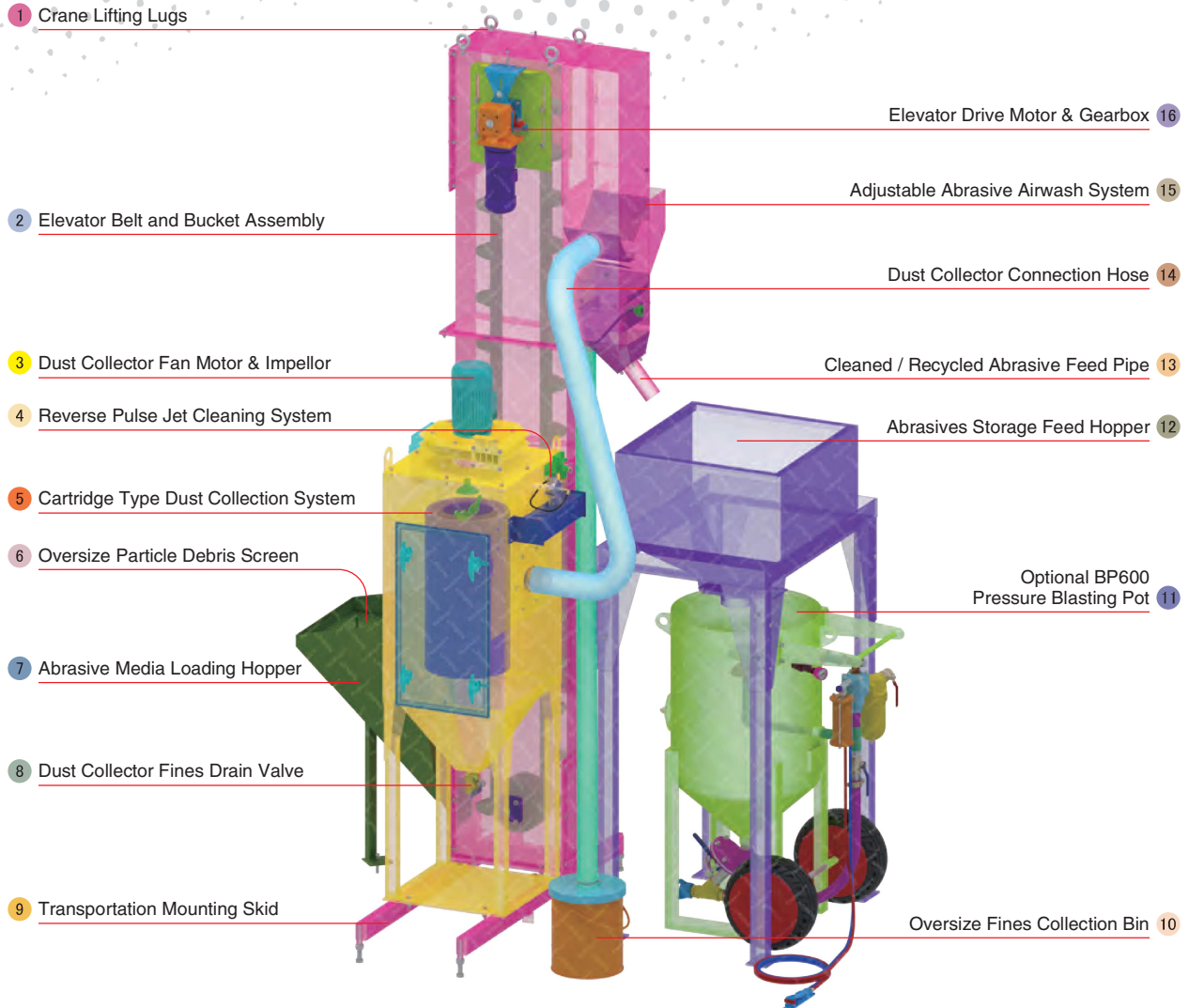
Air Cooling Controller



Blast Hoses



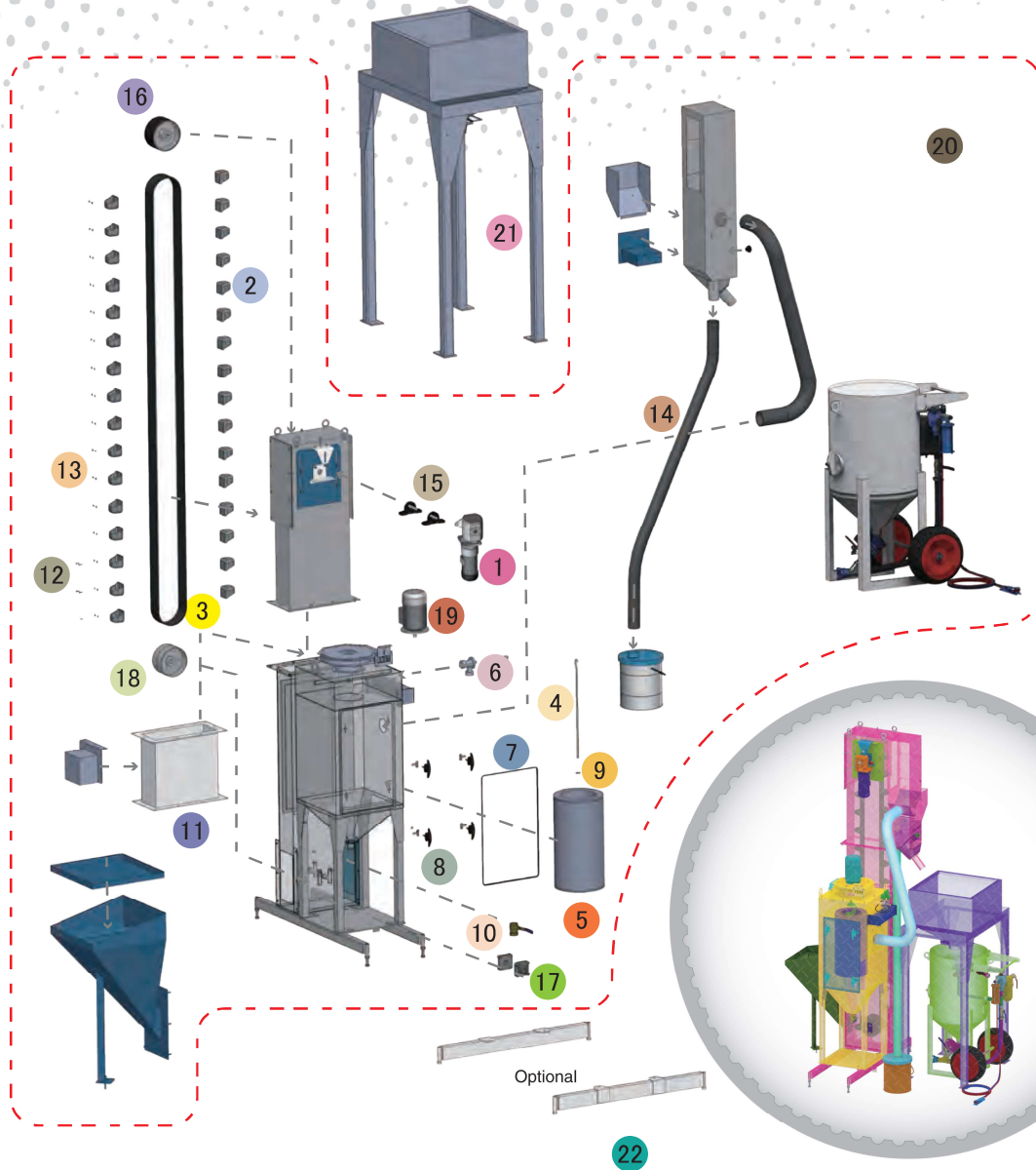
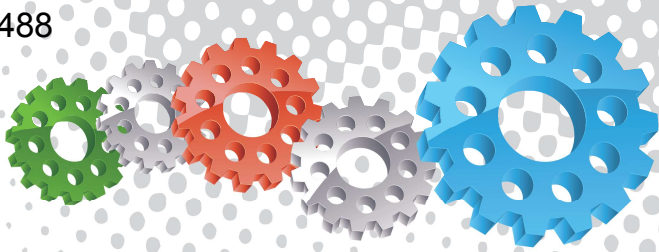
ATN Blast Nozzles



Component Highlights



- | | | |
|---|---|--|
| 1 Crane Lifting Lugs | 7 Abrasive Media Loading Hopper | 13 Cleaned / Recycled Abrasive Feed Pipe |
| 2 Elevator Belt and Bucket Assembly | 8 Dust Collector Fines Drain Valve | 14 Dust Collector Connection Hose |
| 3 Dust Collector Fan Motor & Impellor | 9 Transportation Mounting Skid | 15 Adjustable Abrasive Airwash System |
| 4 Reverse Pulse Jet Cleaning System | 10 Oversize Fines Collection Bin | 16 Elevator Drive Motor & Gearbox |
| 5 Cartridge Type Dust Collection System | 11 Optional BP600 Pressure Blasting Pot | |
| 6 Oversize Particle Debris Screen | 12 Abrasives Storage Feed Hopper | |



Assemblies

| Stock Code | Description | Weight | Include Items |
|----------------|--|-------------------|---------------|
| BEB-AR-0057-00 | Extended ProFlo Recycling System | 550 kg (1213 lbs) | 20 |
| BEB-AR-0058-00 | Extended ProFlo Recycling System Hopper | 160 kg (353 lbs) | 21 |
| BEB-AR-0059-00 | Extended ProFlo System w/ Storage Hopper | 710 kg (1566 lbs) | 20 21 |

Optional Accessories

| Stock Code | Description | Include Items |
|----------------|-----------------------------|---------------|
| YAC-AE-0037-00 | ProFlo – Stabiliser Bar Kit | 22 |



All data and information subject to change without prior notice. Brochure reference: CAT-0902-02-01



Parts List



| Description | Qty | Description | Qty | Description | Qty |
|--|-------|------------------------------|-----|-----------------------------|-----|
| 1 230 VAC 1 Ph 50 Hz Motor | 1 | 8 Handle Tongue | 4 | 15 Block Bearing | 2 |
| 2 Elevator Bucket | 42 | 9 Filter Cartridge Washer | 1 | 16 Crown Pulley Lagged | 1 |
| 3 Elevator Belt | 1 | 10 38 mm (1-1/2") Ball Valve | 1 | 17 Flange Bearing | 2 |
| 4 700 mm Hanger Rod | 1 | 11 Extended Section | 1 | 18 Crown Pulley | 1 |
| 5 Filter Cartridge - Size 2 (Open/Close) | 1 | 12 M6 Bolt - Special | 84 | 19 230 VAC 1 Ph 50 Hz Motor | 1 |
| 6 Pulse Valve | 1 | 13 Washer - Special | 84 | | |
| 7 Dust Collector Door Seal | 2.3 m | 14 Recovery Hose | 1 | | |