



ProFlo Abrasive Recycling System



Product Features

The PanBlast™ ProFlo Abrasive Recycling System is a manually loaded abrasive cleaning system combining an air wash stage with a screening system. The system is designed for use with a single pressure blast pot.

- ▶ Fully adjustable abrasive air wash system removes dust.
- ▶ Simple, efficient bucket elevator system.
- ▶ Single cartridge dry dust collection system with reverse pulse cartridge purging.
- ▶ 240 Volt single-phase electrical power.
- ▶ Cleans garnet abrasive at 3,000 kg (6,600 lbs) per hour.
- ▶ Compatible with most commercial abrasive types.
- ▶ Optional stabilizer bars available for the elevator base plate frame.

Common Applications

- ▶ Extend recyclable abrasive life.
- ▶ Maintain abrasive efficiency by removing dust and debris.
- ▶ Reduce operating costs.

Complementary Products



Pressure Blast Pots



Pow Air Vac



PBF Filter Cartridge



Cosmo SAR



PBF II-3 Airline Filter



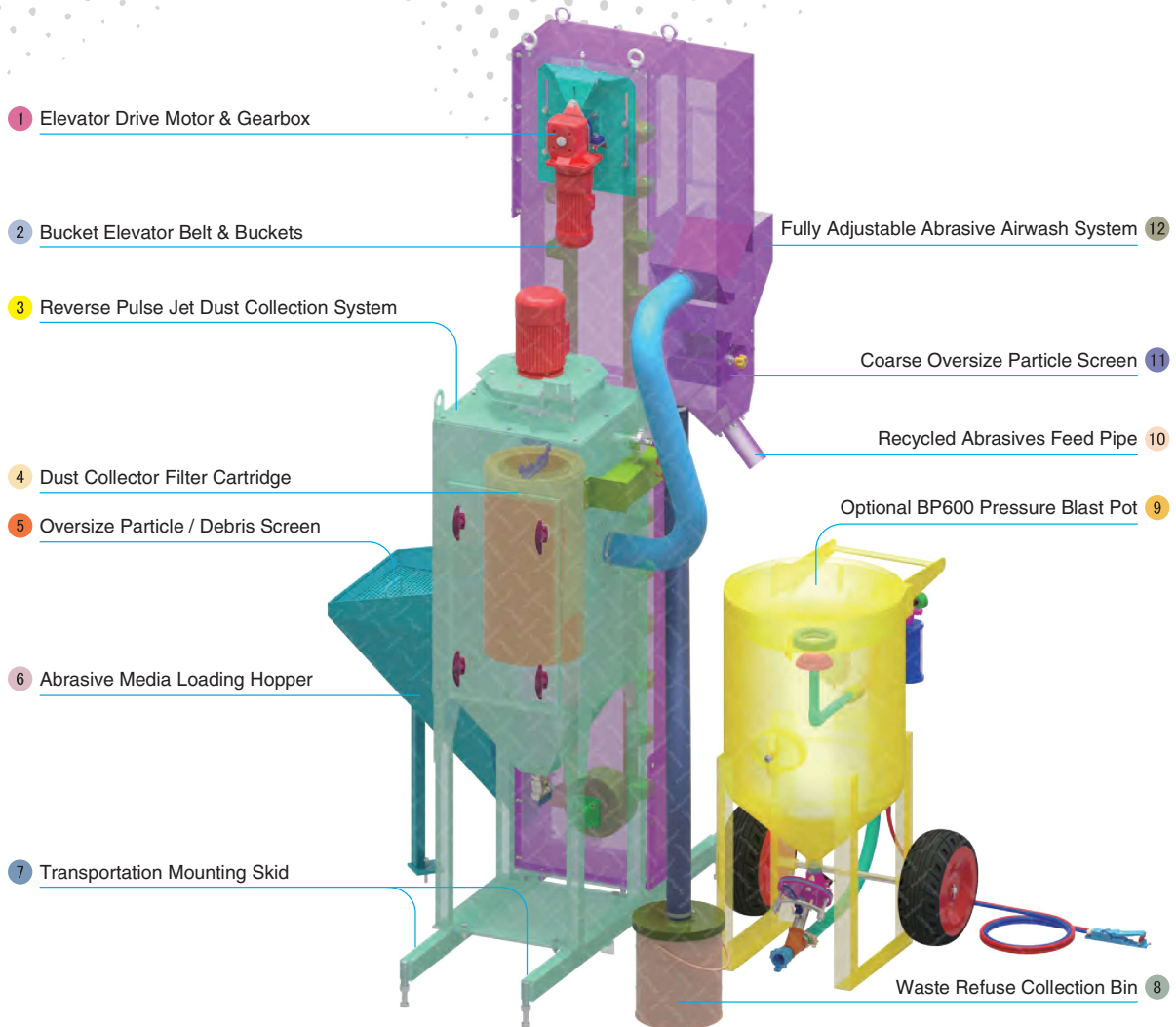
Air Cooling Controller



Blast Hoses



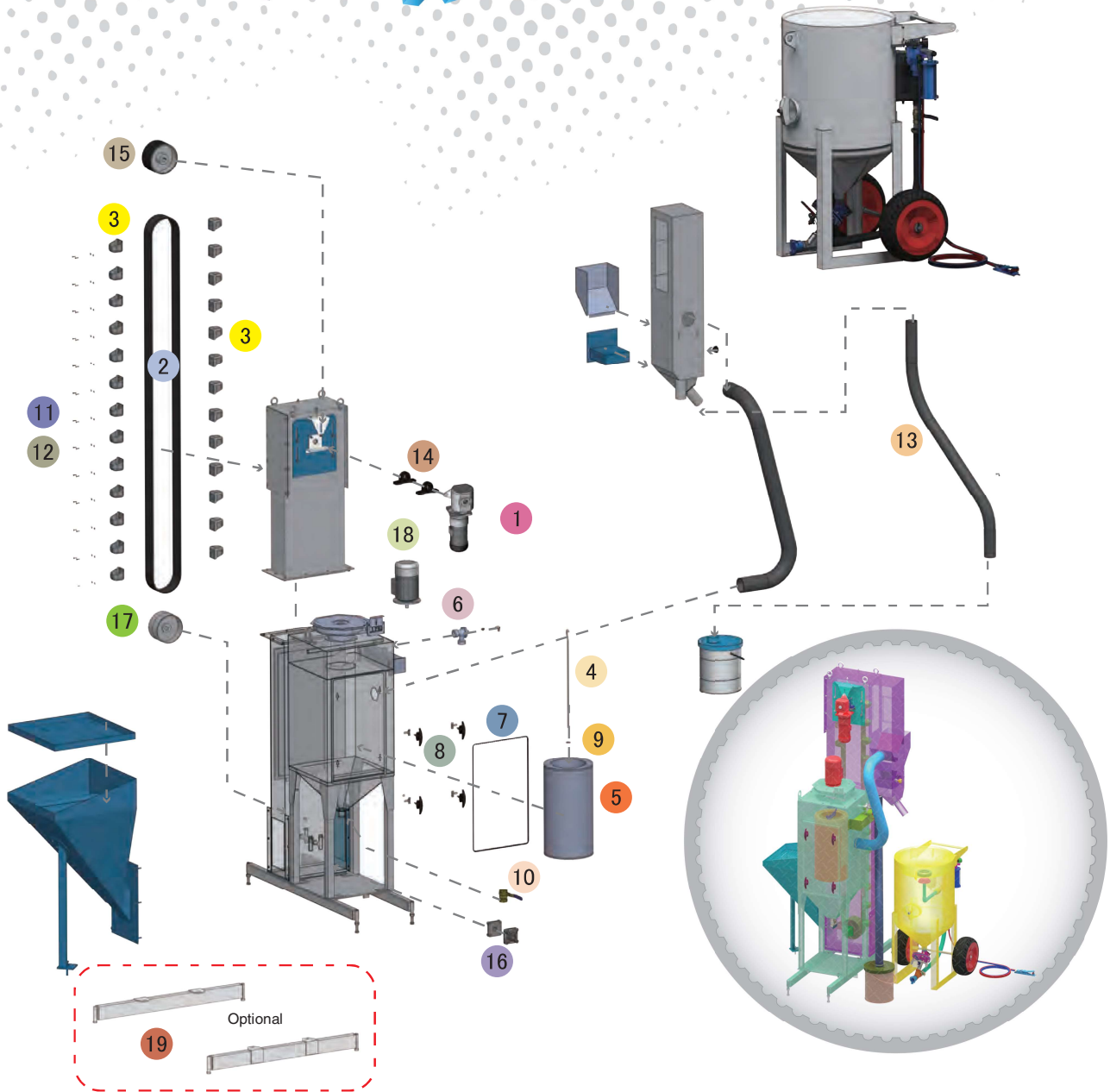
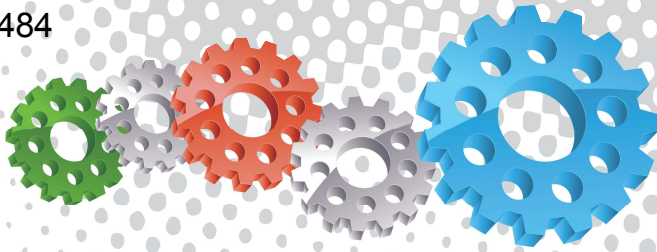
ATN Blast Nozzles



Component Highlights



- | | | |
|--|-------------------------------------|---|
| 1 Elevator Drive Motor & Gearbox | 5 Oversize Particle / Debris Screen | 9 Optional BP600 Pressure Blast Pot |
| 2 Bucket Elevator Belt & Buckets | 6 Abrasive Media Loading Hopper | 10 Recycled Abrasives Feed Pipe |
| 3 Reverse Pulse Jet Dust Collection System | 7 Transportation Mounting Skid | 11 Coarse Oversize Particle Screen |
| 4 Dust Collector Filter Cartridge | 8 Waste Refuse Collection Bin | 12 Fully Adjustable Abrasive Airwash System |



Assembly

Stock Code	Description	Weight
BEB-AR-PB-0001	ProFlo Abrasive Recycling System	780 kg (1720 lbs)

Optional Accessories

Stock Code	Description	Include Items
YAC-AE-0037-00	ProFlo – Stabiliser Bar Kit	19



All data and information subject to change without prior notice. Brochure reference: CAT-0902-01-01



Parts List



Description	Qty	Description	Qty	Description	Qty
1 230VAC 1PH 50HZ Motor	1	7 Dust Collector Door Seal	2.3 m	13 Recovery Hose	1
2 4Ply 100 mm x 5.66 m Elevator Belt	1	8 Handle Tongue	4	14 Block Bearing	2
3 Elevator Bucket	37	9 Filter Cartridge Washer	1	15 Crown Pulley Lagged	1
4 700 mm Hanger Rod	1	10 38 mm (1-1/2") Ball Valve	1	16 Flange Bearing	2
5 Filter Cartridge - Size 2 (Open/Close)	1	11 M6 Bolt - Special	74	17 Crown Pulley	1
6 Pulse Valve	1	12 Washer - Special	74	18 230VAC 1PH 50HZ Motor	1