



BP316-1/AU/MY/NZ Blast Pot



Product Features

PanBlast™ BP 316-1/AU/MY/NZ Blast Pot are available in multiple configurations and specifications to suit varying market requirements worldwide. The BP316-1 is a medium-capacity, automatic blast pot, suitable for general blasting.

- ▶ Designed and manufactured in accordance with international standards and requirements.
- ▶ Third party pressure vessel certificates available on request.
- ▶ UniFlo combination type remote control valve.
- ▶ AirFlo air-bleed type pneumatic deadman handle
- ▶ Fina II type abrasive control valve for precise metering and easy maintenance.
- ▶ Moisture trap, exhaust muffler and main air isolation valve standard.
- ▶ Wide, solid rubber wheels for increased maneuverability and stability.
- ▶ 100 liters (3 ft³) abrasive capacity, 125 psi pressure rating.
- ▶ 32 mm (1-1/4") fittings.

Common Applications

- ▶ On site industrial and commercial blasting.
- ▶ Blast and painting contractor yard work.
- ▶ Blast room applications with or without abrasive recovery systems.
- ▶ In situ blasting in shipyards and slipways.

Complementary Products



Blast Hoses



Safe-T-Pinch Valve



Spartan Blast Helmet



PBF II-1 Airline Filter



Electric Remote Conversion Kit



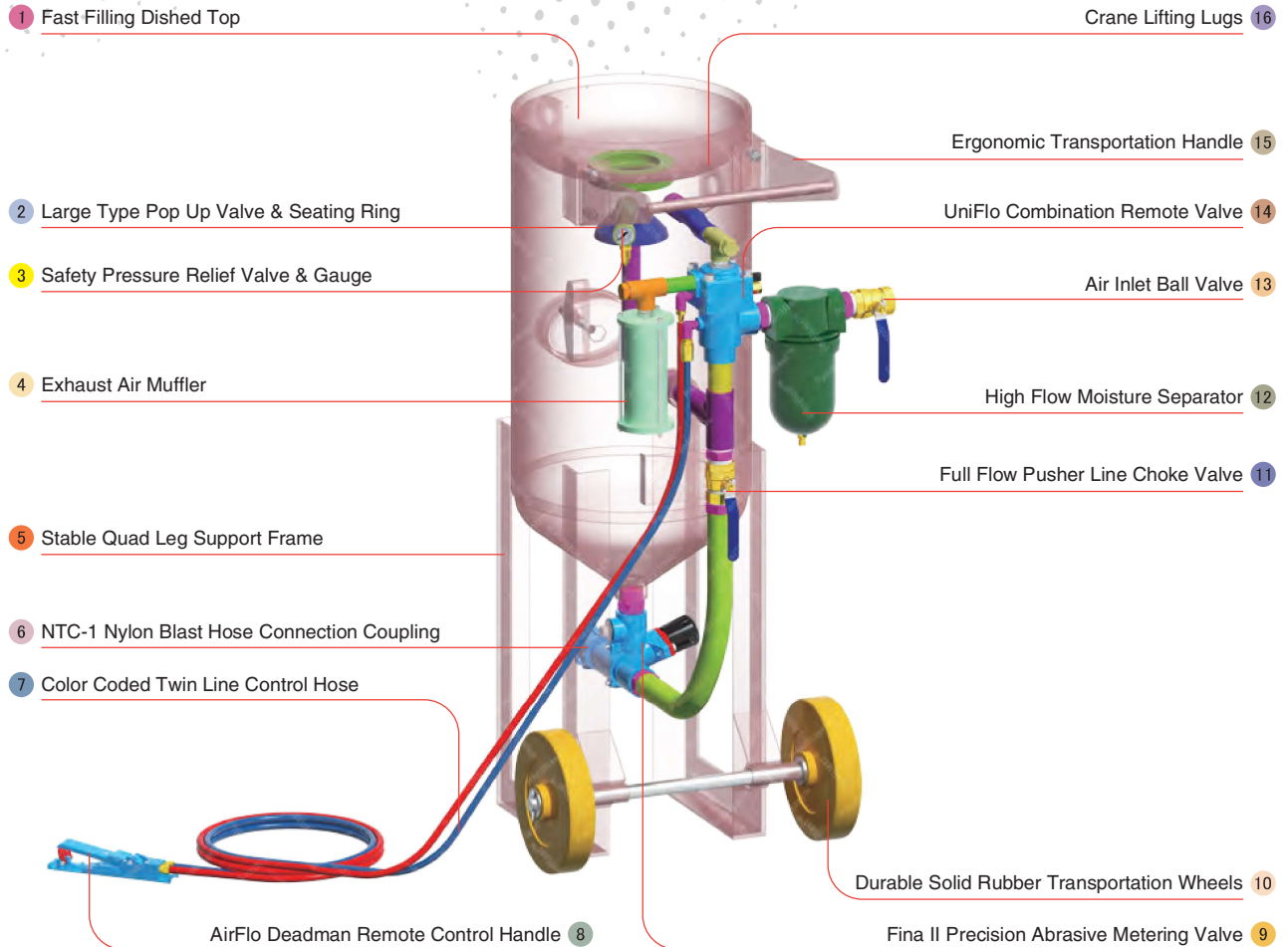
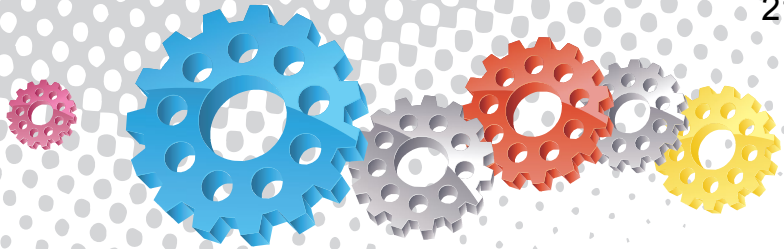
ATN Blast Nozzles



ProFlo Recycling System



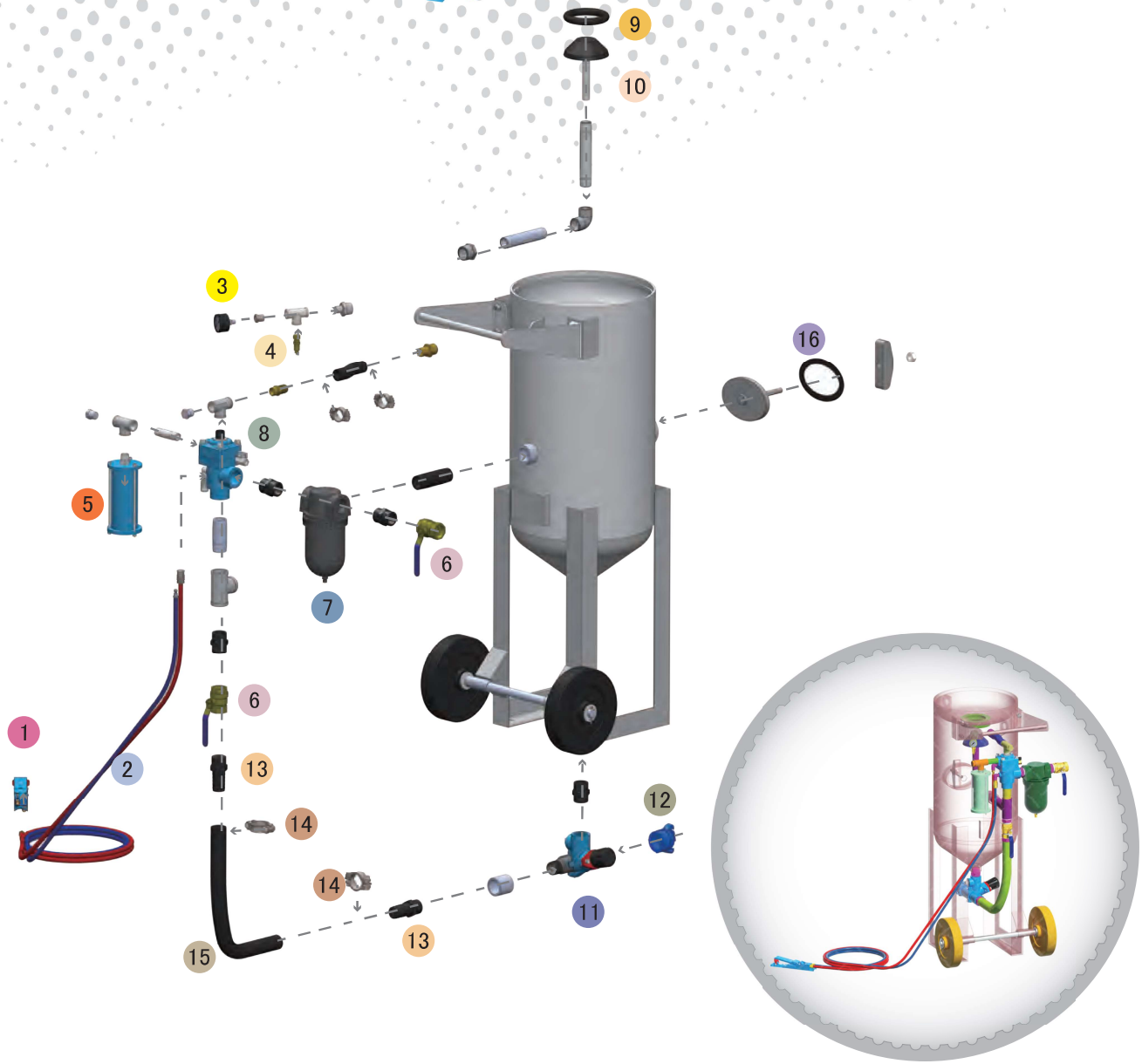
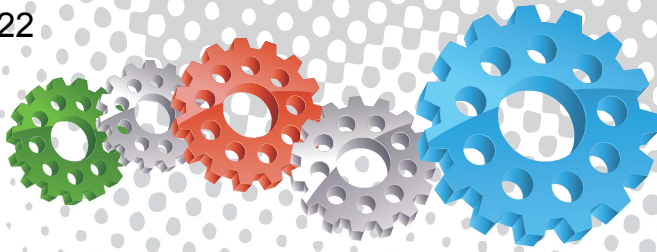
Airless Spray Pumps



Component Highlights



- | | | |
|--|---|------------------------------------|
| 1 Fast Filling Dished Top | 7 Color Coded Twin Line Control Hose | 13 Air Inlet Ball Valve |
| 2 Large Type Pop Up Valve & Seating Ring | 8 AirFlo Deadman Remote Control Handle | 14 UniFlo Combination Remote Valve |
| 3 Safety Pressure Relief Valve & Gauge | 9 Fina II Precision Abrasive Metering Valve | 15 Ergonomic Transportation Handle |
| 4 Exhaust Air Muffler | 10 Durable Solid Rubber Transportation Wheels | 16 Crane Lifting Lugs |
| 5 Stable Quad Leg Support Frame | 11 Full Flow Pusher Line Choke Valve | |
| 6 NTC-1 Nylon Blast Hose Connection Coupling | 12 High Flow Moisture Separator | |



Assembly

Stock Code	Description	Dry Weight	Abrasive Capacity	Piping Size
BEP-PS-0064-00	BP316-1/AU/MY/NZ UniFlo Fina II AirFlo	150 kg (330 lbs)	100 litres (3 ft³)	32 mm (1-1/4")

Notation:

AU: Approved by Worksafe, Australia.
 MY: Approved by Department of Occupational Safety and Health, Malaysia.
 NZ: Approved by Department of Labour, New Zealand.



All data and information subject to change without prior notice. Brochure reference: CAT-0101-03-02



Parts List



Description	Qty	Description	Qty	Description	Qty
1 AirFlo Pneumatic Control Handle	1	7 32 mm (1-1/4") Port Moisture Separator	1	13 KC Nipple	2
2 20 m (66") Twinline Hose Assembly	1	8 Uniflo Valve With Fittings - 90 Deg	1	14 Hose Clamp	2
3 6 mm (1/4") Pressure Gauge - Rear Entry	1	9 Pop Up Valve Seating Ring	1	15 32 mm (1-1/4") Air Supply Hose	0.7 m
4 1/2" BSP - 125 PSI Pressure Relief Valve	1	10 Pop Up Valve - Stem Type	1	16 Blast Pot-H/Hole 192 x 144-Sealing Gasket	1
5 Exhaust Muffler	1	11 Fina II Valve 1-1/4"M x 1-1/4"M	1		
6 32 mm (1-1/4") Ball Valve	2	12 NTC-1 Nylon Threaded Pot Coupling	1		