



Helix 100 Inlet Valve Assembly



Product Features

The PanBlast™ Helix 100 Inlet Valve Assembly is an air actuated, control valve, used to control blast pot supply air and designed to be used in conjunction with the Helix 50 Exhaust Control Valve or similar. The BSP configuration is compatible with most non-U.S. pressure blasting equipment.

- ▶ Fast, efficient operation.
- ▶ Anodized internal parts.
- ▶ Powder coated external parts.
- ▶ Parts interchangeable with OEM RMS/RCV style valves.
- ▶ 32 mm (1-1/4") BSP threads.

Common Applications

- ▶ Blast pot control for blast room, yard or on site operations.
- ▶ OEM valve replacement.

Complementary Products



Helix 50 Outlet Valve



Diaphragm Dump Valve



QuikStop IIS Pneumatic Handle



Pop Up Valves



AirFlo Pneumatic Handle



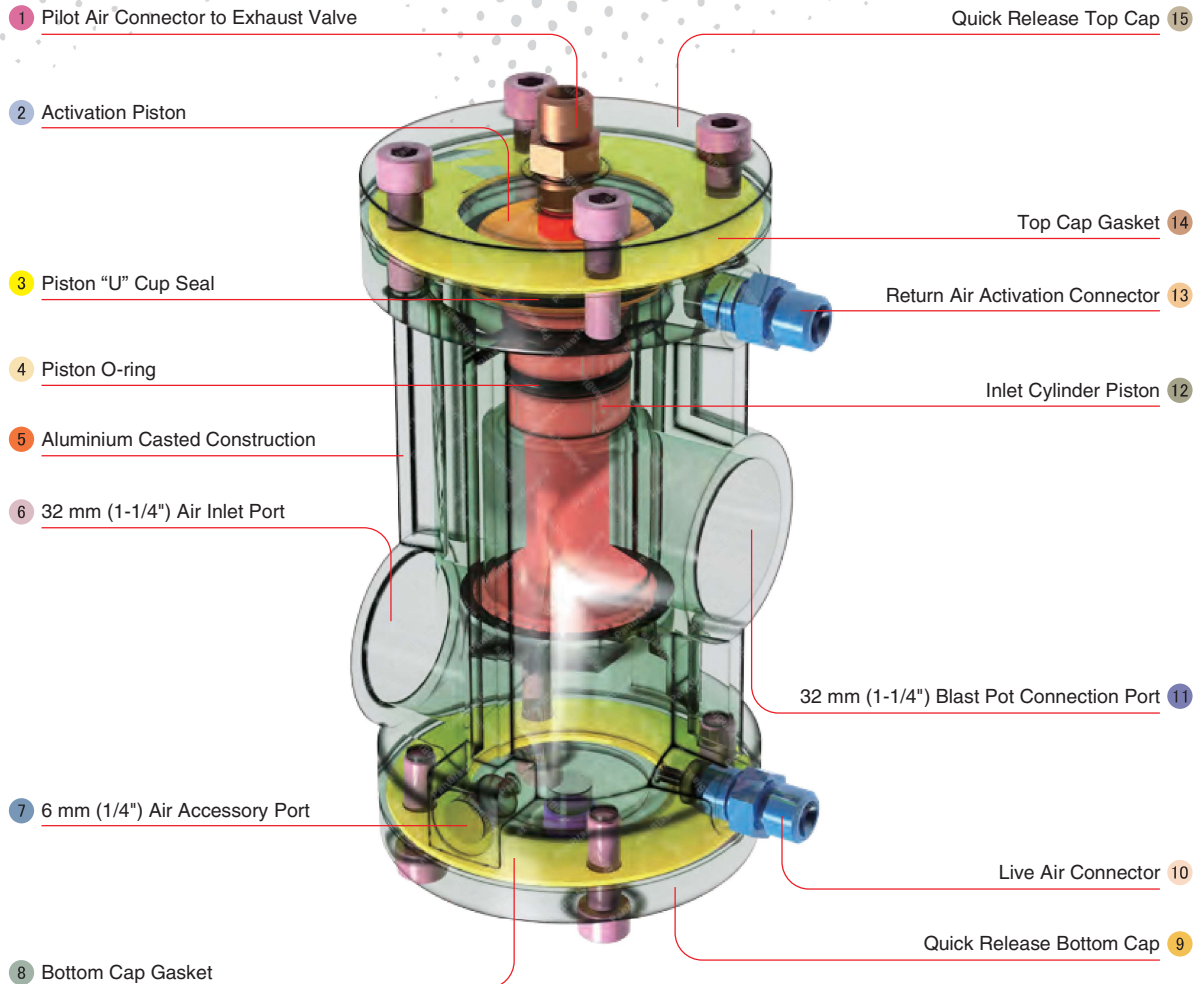
AirFlo Electric Handle



Twinline Hose



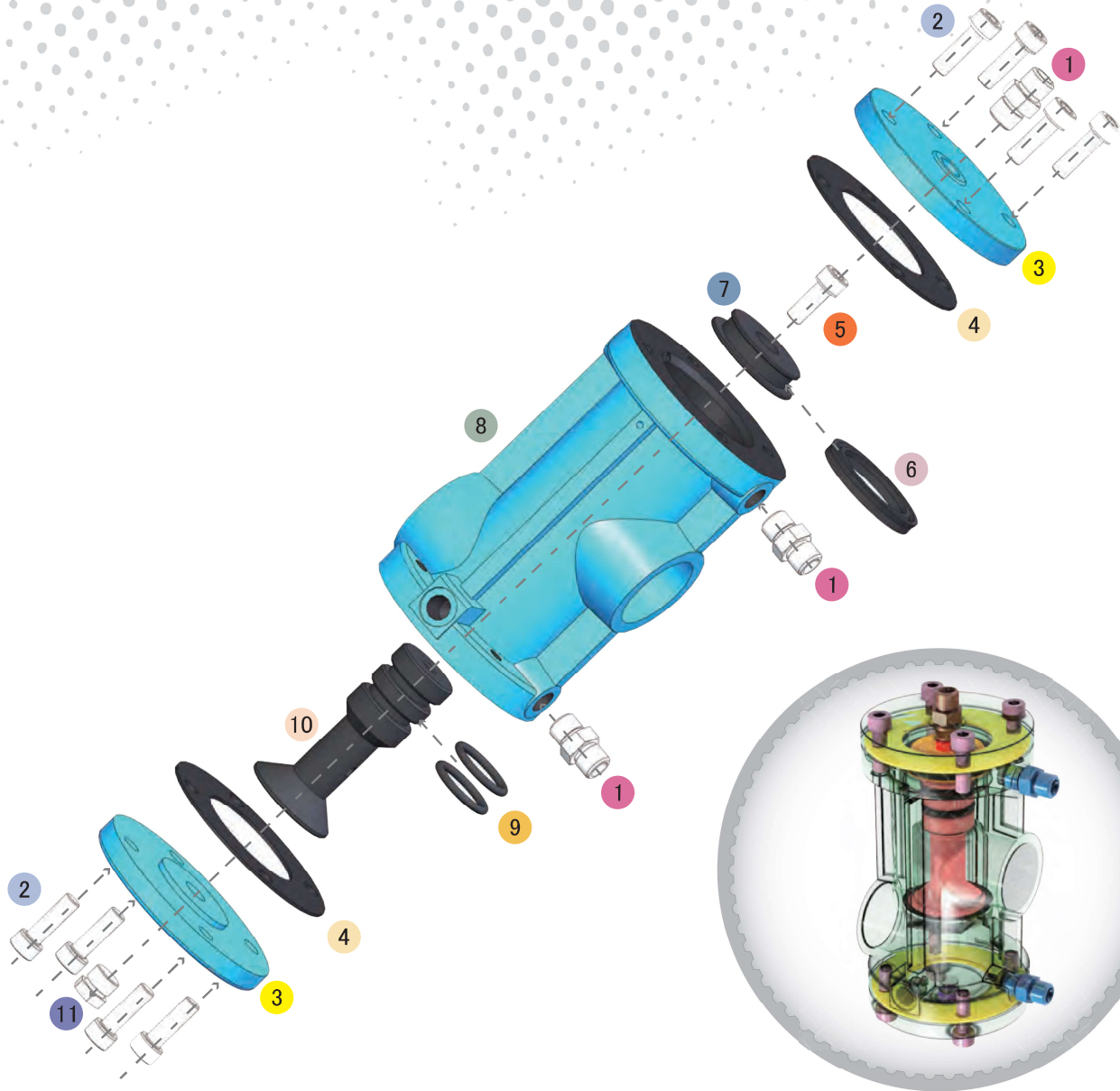
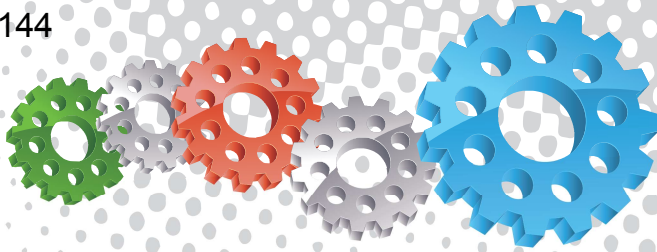
Exhaust Muffler



Component Highlights



- | | | |
|--|----------------------------------|---|
| 1 Pilot Air Connector to Exhaust Valve | 6 32 mm (1-1/4") Air Inlet Port | 11 32 mm (1-1/4") Blast Pot Connection Port |
| 2 Activation Piston | 7 6 mm (1/4") Air Accessory Port | 12 Inlet Cylinder Piston |
| 3 Piston "U" Cup Seal | 8 Bottom Cap Gasket | 13 Return Air Activation Connector |
| 4 Piston O-ring | 9 Quick Release Bottom Cap | 14 Top Cap Gasket |
| 5 Aluminium Casted Construction | 10 Live Air Connector | 15 Quick Release Top Cap |



Assembly

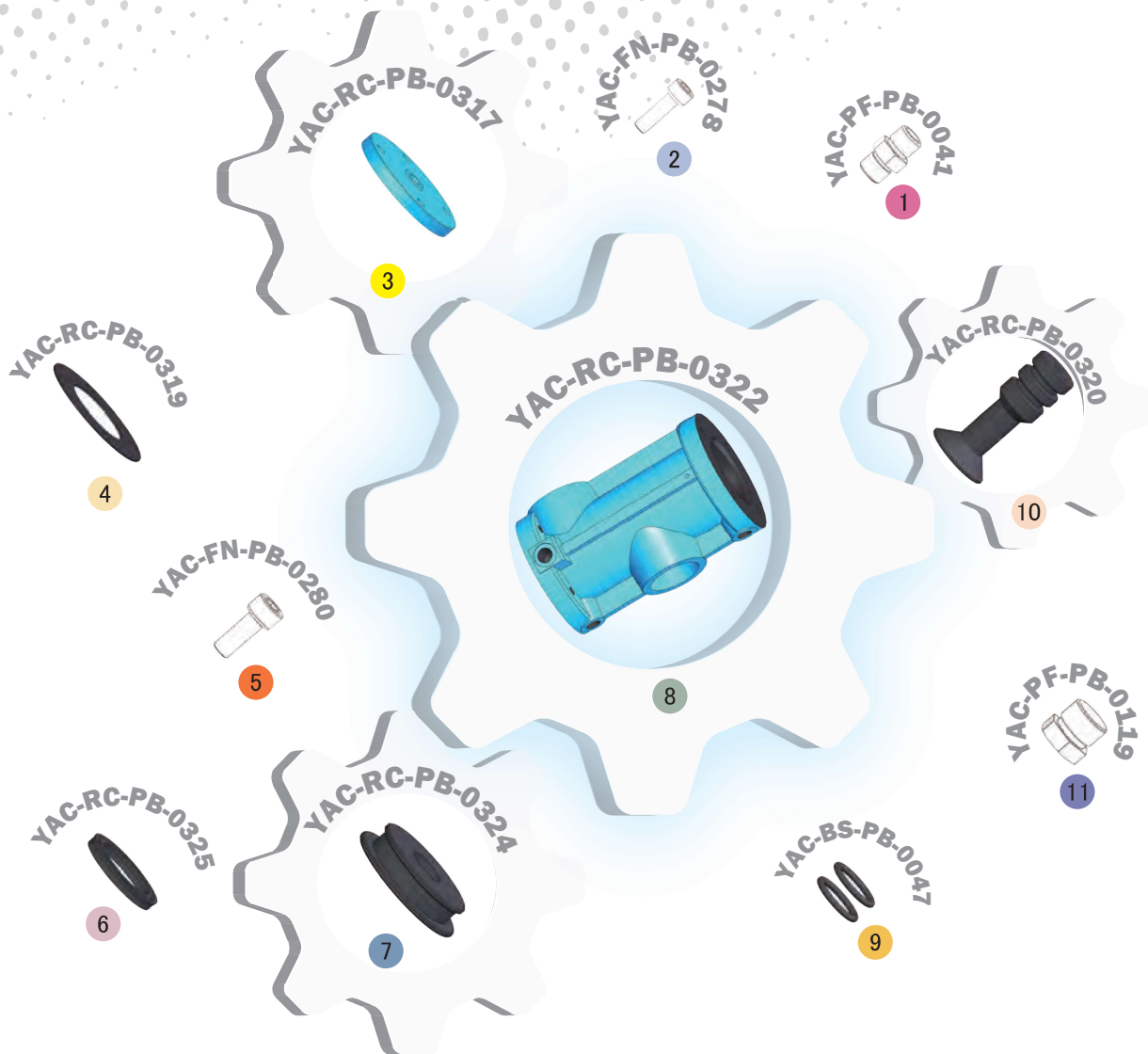
Stock Code	Description	Weight
BAC-RC-PB-0305	Helix 100 Inlet Valve Assembly	2 kg (4.41 lbs)

Service Kits

Stock Code	Description	Include Items
YAC-RC-PB-0335	End Cap Kit	1 3 4
BAC-RC-0477-00	Helix 100 Valve Seal Kit	4 x2 6 9 x2



All data and information subject to change without prior notice. Brochure reference CAT-0201-09-00



Parts List



Description	Qty	Description	Qty	Description	Qty
1 Nipple	3	5 Screw	1	9 O-ring	2
2 Screw	8	6 Piston U-Seal	1	10 Inlet Piston	1
3 Cylinder Housing Cap	2	7 Piston	1	11 Plug	1
4 Cap Gasket	2	8 Housing	1		