



## Helix 150 Valve Assembly



### Product Features

The PanBlast™ Helix 150 BSP Remote Control Valve combines the Helix 100 BSP Inlet Control Valve and the Helix 50 BSP Exhaust Control Valve, for a compact, air actuated valve that controls the blast pot supply air and exhaust, in tandem with a remote control handle. The BSP configuration is compatible with most non-U.S. blasting equipment.

- ▶ Anodized internal parts.
- ▶ Powder coated external parts.
- ▶ Parts interchangeable with OEM RMS/RCV style valves.

### Common Applications

- ▶ On site industrial and commercial blasting.
- ▶ Blast and painting contractor yard work.
- ▶ Blast room applications.
- ▶ In situ blasting in shipyards and slipways.

### Complementary Products



AirFlo Pneumatic Handle



Twinline Hose



QuikStop IIS Pneumatic Handle



Moisture Separator



AirFlo Electric Handle



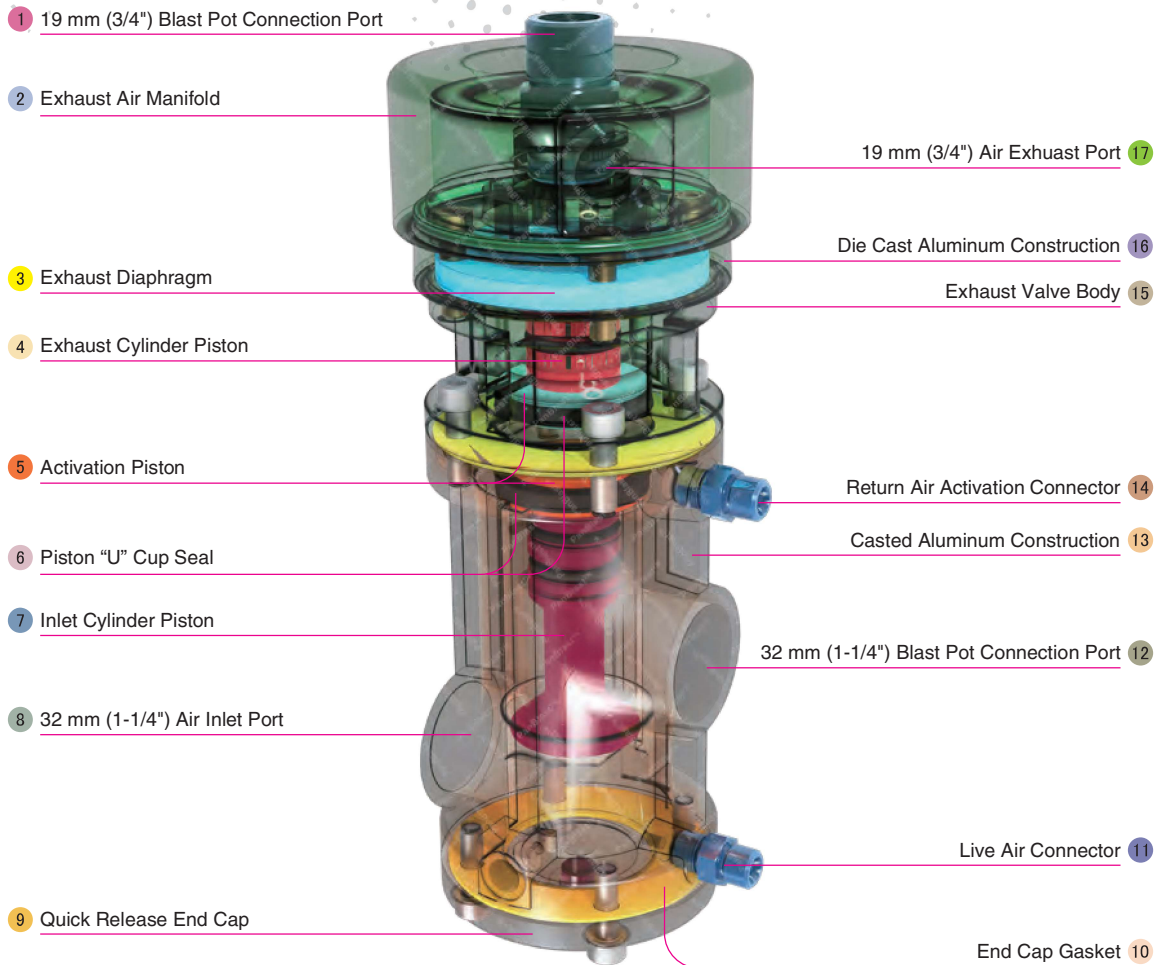
Plana II Valve



Exhaust Muffler



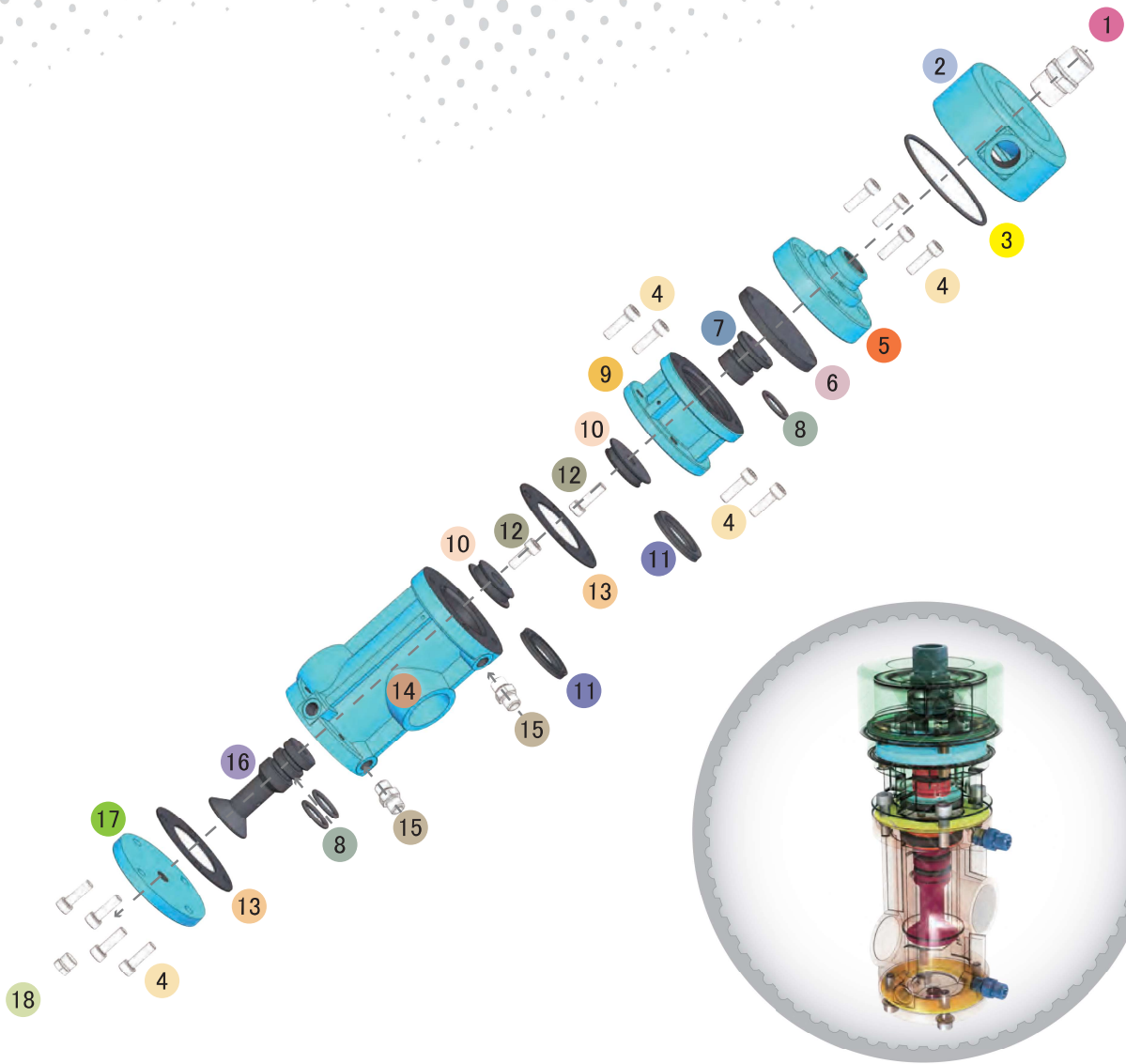
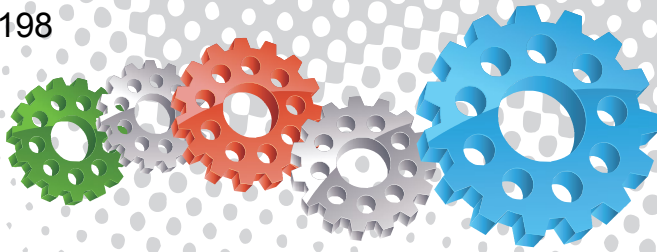
Fina II Valve



## Component Highlights



- |  |   |                                    |
|--|---|------------------------------------|
| 1 19 mm (3/4") Blast Pot Connection Port | 7 Inlet Cylinder Piston                     | 13 Casted Aluminum Construction    |
| 2 Exhaust Air Manifold                   | 8 32 mm (1-1/4") Air Inlet Port             | 14 Return Air Activation Connector |
| 3 Exhaust Diaphragm                      | 9 Quick Release End Cap                     | 15 Exhaust Valve Body              |
| 4 Exhaust Cylinder Piston                | 10 End Cap Gasket                           | 16 Die Cast Aluminum Construction  |
| 5 Activation Piston                      | 11 Live Air Connector                       | 17 19 mm (3/4") Air Exhaust Port   |
| 6 Piston "U" Cup Seal                    | 12 32 mm (1-1/4") Blast Pot Connection Port |                                    |



## Assembly

Stock Code	Description	Weight
BAC-RC-PB-0307	Helix 150 Valve Assembly	3.24 kg (7.13 lbs)

## Service Kit

Stock Code	Description	Include Items
BAC-RC-0478-00	Helix 150 Valve Seal Kit	3 6 8 x3 11 x2 13 x2



All data and information subject to change without prior notice. Brochure reference CAT-0203-08-00



## Parts List



Description	Qty	Description	Qty	Description	Qty
1 Nipple - Customized	1	7 Outlet Piston	1	13 Cap Gasket	2
2 Exhaust Manifold	1	8 O-ring	3	14 Housing	1
3 O-ring	1	9 Exhaust Cylinder	1	15 Nipple	2
4 Screw	12	10 Piston	2	16 Inlet Piston	1
5 Exhaust Base	1	11 Piston U-Seal	2	17 Cylinder Housing Cap	1
6 Diaphragm	1	12 Screw	2	18 Plug	1