



## Helix 50 NPT Outlet Valve Assembly



### Product Features

The PanBlast™ Helix 50 NPT Exhaust Control Valve is a diaphragm operated exhaust air control valve used to depressurize the blast pot. It is designed to be used in conjunction with the PanBlast™ Helix 100 NPT Inlet Control Valve or similar. The NPT configuration is compatible with most U.S. pressure blasting equipment.

- ▶ Fast, efficient operation.
- ▶ Anodized internal parts.
- ▶ Powder coated external parts.
- ▶ Parts interchangeable with OEM RMS/RCV style valves.
- ▶ 19 mm (3/4") NPT threads.

### Common Applications

- ▶ Blast pot control for blast room, yard or on site operations.
- ▶ OEM valve replacement.

### Complementary Products



Helix 100 NPT Inlet Valve



Tandem Inlet Valve



QuikStop IIS Pneumatic Handle



Pop Up Valves



AirFlo Pneumatic Handle



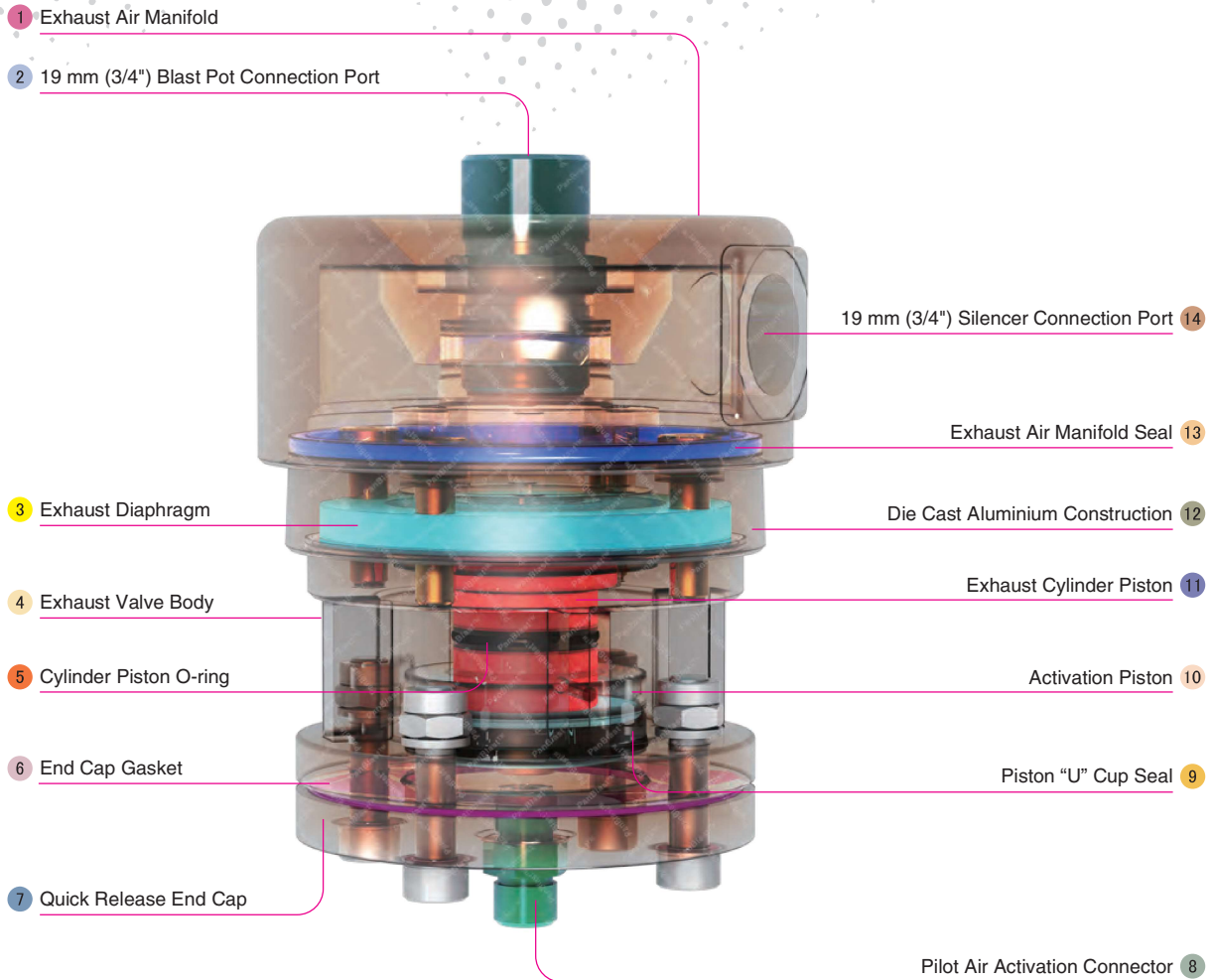
AirFlo Electric Handle



Twinline Hose



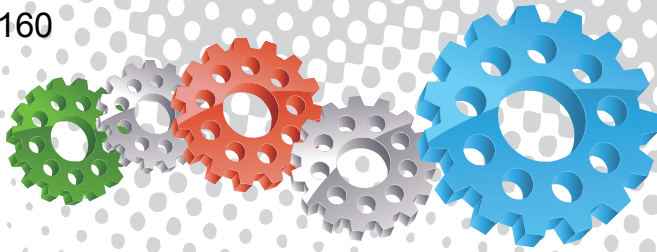
Exhaust Muffler



## Component Highlights



- |  |                                  |  |
|--|----------------------------------|--|
| 1 Exhaust Air Manifold                   | 6 End Cap Gasket                 | 11 Exhaust Cylinder Piston               |
| 2 19 mm (3/4") Blast Pot Connection Port | 7 Quick Release End Cap          | 12 Die Cast Aluminium Construction       |
| 3 Exhaust Diaphragm                      | 8 Pilot Air Activation Connector | 13 Exhaust Air Manifold Seal             |
| 4 Exhaust Valve Body                     | 9 Piston "U" Cup Seal            | 14 19 mm (3/4") Silencer Connection Port |
| 5 Cylinder Piston O-ring                 | 10 Activation Piston             |  |



## Assembly

Stock Code	Description	Weight
BAC-RC-PB-0310	Helix 50 NPT Outlet Valve Assembly	2.13 kg (4.69 lbs)

## Service Kits

Stock Code	Description	Include Items
YAC-RC-PB-0335	End Cap Kit	15 16 19
BAC-RC-0476-00	Helix 50 Valve Seal Kit	3 6 8 13 15





All data and information subject to change without prior notice. Brochure reference CAT-0202-03-00



## Parts List



Description	Qty	Description	Qty	Description	Qty
1 Nipple - NPT	1	8 O-Ring	1	15 Cap Gasket	1
2 Exhaust Manifold - NPT	1	9 Exhaust Cylinder - NPT	1	16 Cylinder Housing Cap	1
3 O-Ring	1	10 Lock Nut	4	17 Flat Washer	4
4 Screw	4	11 Spring Washer	4	18 Screw	4
5 Exhaust Base - NPT	1	12 Piston	1	19 Nipple	1
6 Diaphragm	1	13 Piston U-Seal	1		
7 Outlet Piston - NPT	1	14 Screw	1		