



HiFlo NPT Exhaust Dump Valve Assembly



Product Features

The PanBlast™ HiFlo NPT Exhaust Dump Valve Assembly is a piston operated type valve, designed for use with blast pot remote control systems utilizing the Sola 10/30 or similar control valves. The NPT configuration is compatible with most U.S. blasting equipment.

- ▶ Rugged, reliable piston operation.
- ▶ Lightweight cast aluminum body.
- ▶ Anodized internal parts.
- ▶ Powder coated exterior.
- ▶ Service kit available.
- ▶ 25 mm (1") NPT threaded connection.

Common Applications

- ▶ Remote exhaust control for medium capacity blast pots
- ▶ Replacement and upgrade of OEM valves.

Complementary Products



Helix 100 NPT Inlet Valve



Tandem Inlet Valve



QuikStop IIS Pneumatic Handle



Sola 10 Inlet Valve



AirFlo Pneumatic Handle



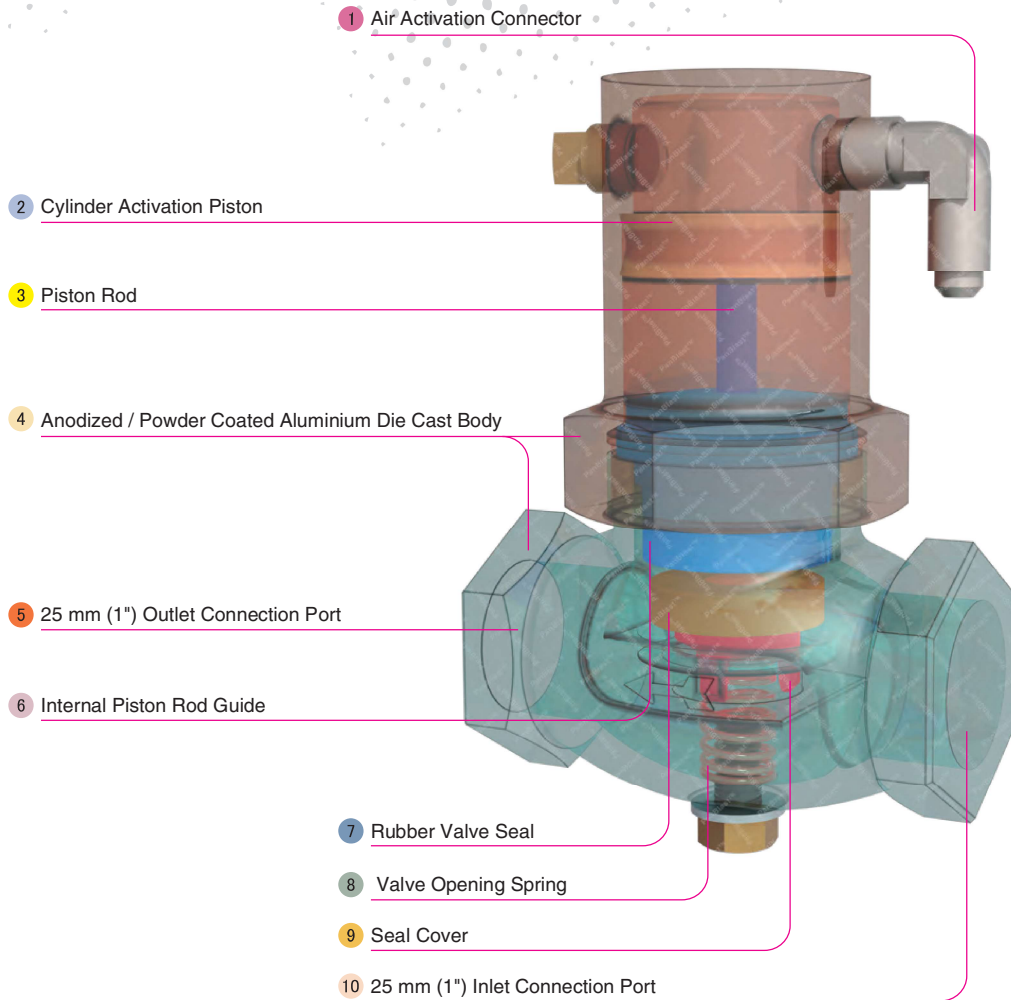
Sola 30 Inlet Valve



AbraFlo Abrasive Trap



Exhaust Muffler



Component Highlights



1 Air Activation Connector

5 25 mm (1") Outlet Connection Port

9 Seal Cover

2 Cylinder Activation Piston

6 Internal Piston Rod Guide

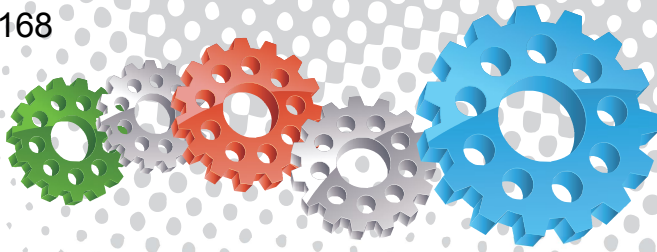
10 25 mm (1") Inlet Connection Port

3 Piston Rod

7 Rubber Valve Seal

4 Anodized / Powder Coated Aluminium Die Cast Body

8 Valve Opening Spring



Assembly

Stock Code	Description	Weight
BAC-RC-PB-0197	HiFlo NPT Exhaust Dump Valve Assembly	0.8 kg (1.76 lbs)



All data and information subject to change without prior notice. Brochure reference CAT-0202-05-00



Parts List



Description	Qty	Description	Qty	Description	Qty
1 Base	1	6 Piston Rod Guide	1	11 Flat Washer	1
2 Nut	1	7 Rubber Seat	1	12 Screw	1
3 Rubber Piston	1	8 Rubber Seal	1	13 Plug	1
4 Piston Rod	1	9 Rubber Seal Cover	1	14 NPT/UNF Elbow	1
5 Spring	1	10 Body	1		