



## Kombi II NPT Remote Control Valve



### Product Features

The PanBlast™ Kombi II NPT Remote Control Valve is an improved combination inlet and exhaust valve, working in conjunction with the AirStop Remote Control Handle to simultaneously control the blast pot supply air and exhaust. The Kombi II features updated materials and a simplified design over the original Kombi valve. The NPT configuration is suitable for use with most U.S. blasting equipment.

- ▶ Simplified, integrated design.
- ▶ Redesigned Delrin® upper rod guide.
- ▶ Clear acrylic top cover allows inspection of the exhaust hose.
- ▶ Powder coat external finish.
- ▶ Anodized internally.

▶ Interchangeable with other generic valves.

### Common Applications

- ▶ On site industrial and commercial blasting.
- ▶ Blast and painting contractor yard work.
- ▶ Blast room applications.
- ▶ In situ blasting in shipyards and slipways.

### Complementary Products



AirStop Pneumatic Handle



Twinline Hose



AirStop II Pneumatic Handle



Pop Up Valves



AirStop Electric Handle



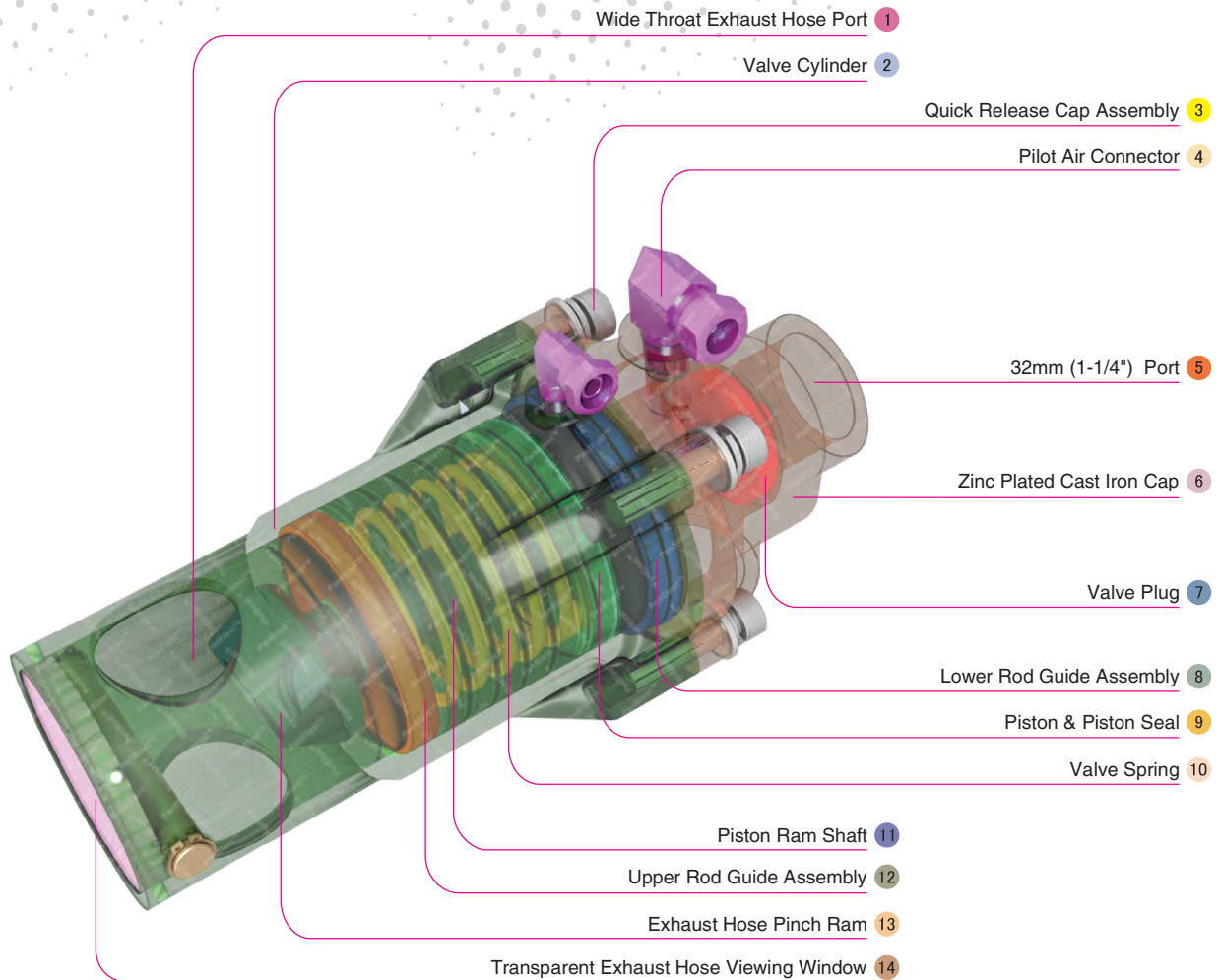
AirStop IV Pneumatic Handle



AirStop II Electric Handle



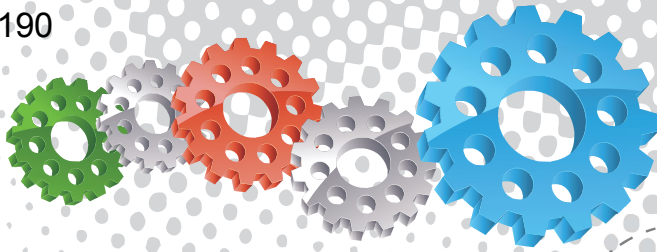
Exhaust Muffler



## Component Highlights



- |                                 |                             |  |
|---------------------------------|-----------------------------|--|
| 1 Wide Throat Exhaust Hose Port | 6 Zinc Plated Cast Iron Cap | 11 Piston Ram Shaft                        |
| 2 Valve Cylinder                | 7 Valve Plug                | 12 Upper Rod Guide Assembly                |
| 3 Quick Release Cap Assembly    | 8 Lower Rod Guide Assembly  | 13 Exhaust Hose Pinch Ram                  |
| 4 Pilot Air Connector           | 9 Piston & Piston Seal      | 14 Transparent Exhaust Hose Viewing Window |
| 5 32 mm (1-1/4") Port           | 10 Valve Spring             |  |



## Assembly

Stock Code	Description	Weight
BAC-RC-0509-00	Kombi II NPT Remote Control Valve	3.9 kg (8.6 lbs)

## Service Kits

Stock Code	Description	Include Items
BAC-RC-PB-0365	Kombi Valve Plug Assembly Kit	18 19 x2 20 21 22
BAC-RC-PB-0265	Kombi Valve Seal Service Kit	12 13 14 17 18 19 x2 20 21 22 30 33
BAC-RC-PB-0163	Kombi Valve Service Kit	12 13 14 17 18 19 x2 20 30 33



All data and information subject to change without prior notice. Brochure reference: CAT-0203-07-00



## Parts List



Description	Qty	Description	Qty	Description	Qty
1 Cover	1	12 O-ring	1	23 Elbow With Nut - NPT	1
2 Pin	1	13 Circlip	1	24 Base	1
3 Circlip	2	14 Piston Seal	1	25 Screw	4
4 Screw	4	15 Piston	1	26 Flat Washer	4
5 Cylinder	1	16 Kombi Lower Rod Guide Kit	1	27 Spring Washer	4
6 Exhaust Filter Brass	1	17 O-ring	1	28 Lower Rod Guide	1
7 Elbow With Nut - NPT	1	18 Valve Plug	1	29 Lower Rod Guide Bush	1
8 Pinch Ram	1	19 O-ring	2	30 Lower Seal	1
9 Kombi II Upper Rod Guide Kit	1	20 Flat Washer	1	31 Circlip	1
10 Spring	1	21 Spring Washer	1	32 Upper Rod Guide	1
11 Shaft	1	22 Lock Nut	1	33 Upper Seal	1