



Kombi NPT Remote Control Valve



Product Features

The PanBlast™ Kombi NPT Remote Control Valve is an air operated combination inlet and exhaust valve, used in conjunction with the AirStop Remote Control Handle to simultaneously control the blast pot supply air and exhaust. The NPT configuration is suited for use with most U.S. blasting equipment.

- ▶ One-piece construction for easy installation.
- ▶ Single piston design.
- ▶ 32 mm (1-1/4") NPT threads.

Common Applications

- ▶ On site industrial and commercial blasting.
- ▶ Blast and painting contractor yard work.
- ▶ Blast room applications.
- ▶ In situ blasting in shipyards and slipways.

Complementary Products



AirStop Pneumatic Handle



Twinline Hose



AirStop II Pneumatic Handle



Pop Up Valves



QuikStop IIS Electric Handle



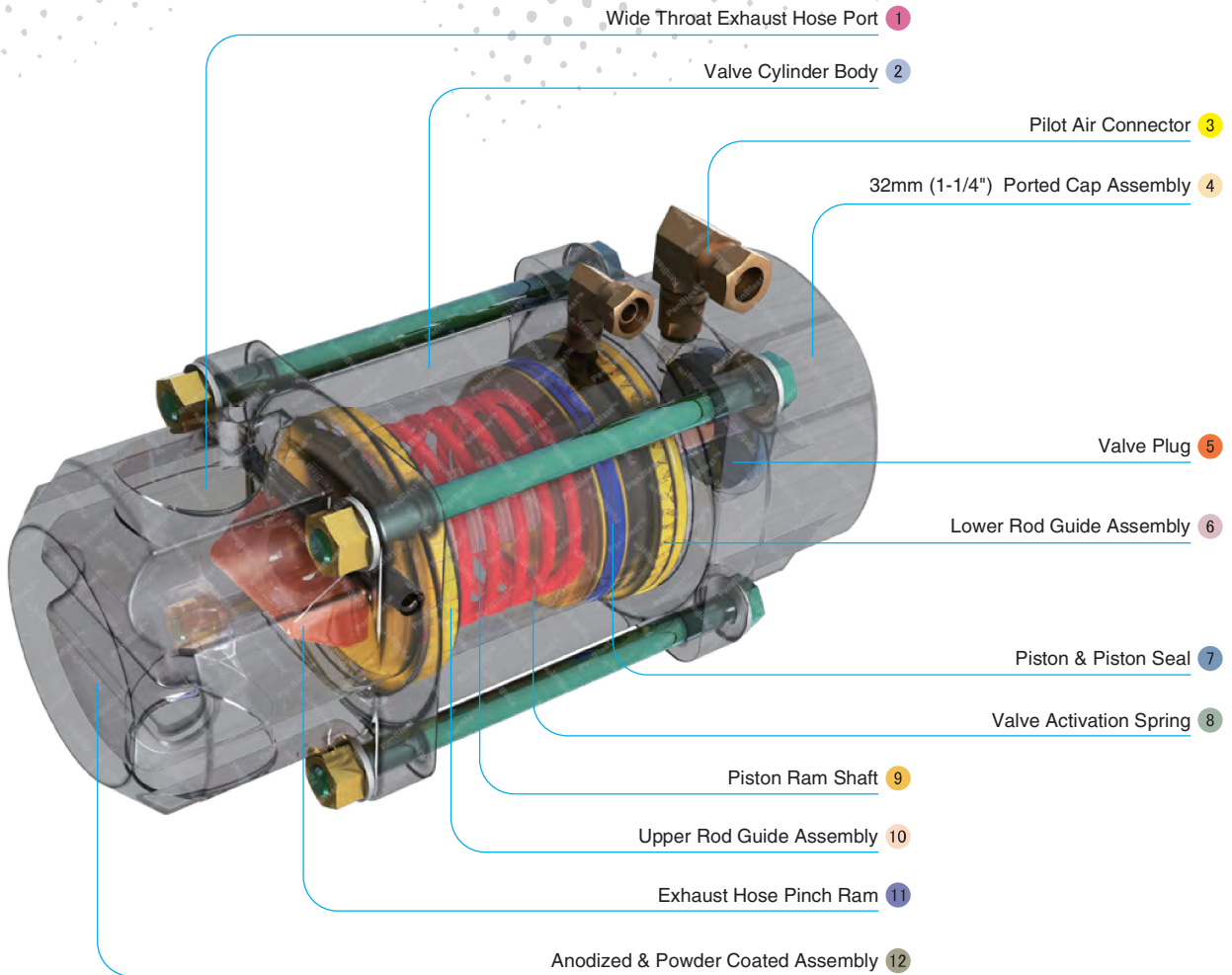
AirStop IV Pneumatic Handle



AirStop II Electric Handle



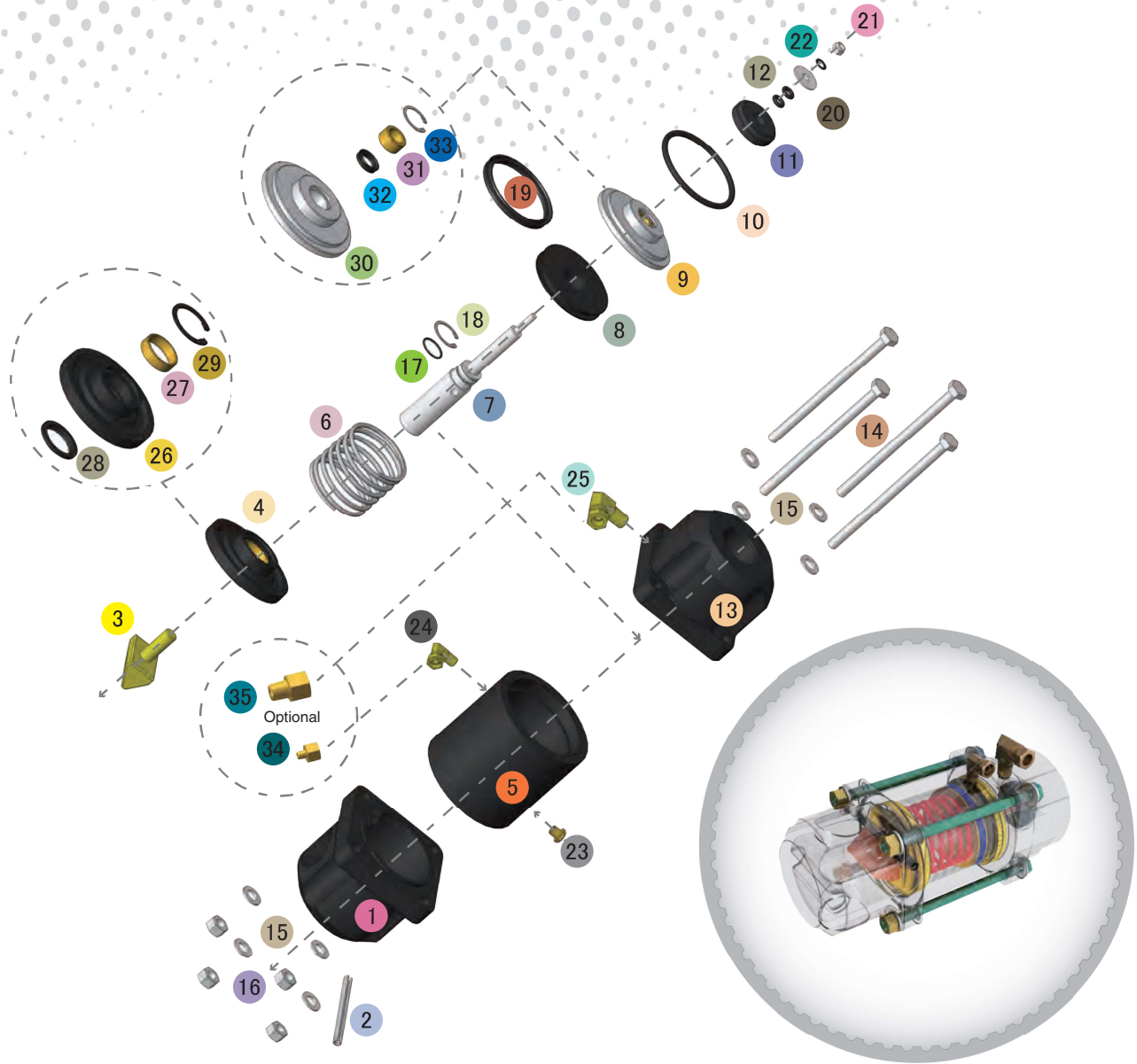
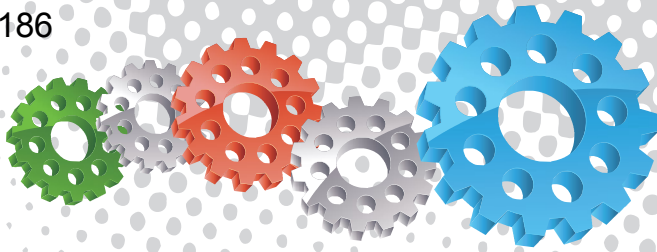
Exhaust Muffler



Component Highlights



- | | | |
|--------------------------------------|----------------------------|--------------------------------------|
| 1 Wide Throat Exhaust Hose Port | 5 Valve Plug | 9 Piston Ram Shaft |
| 2 Valve Cylinder Body | 6 Lower Rod Guide Assembly | 10 Upper Rod Guide Assembly |
| 3 Pilot Air Connector | 7 Piston & Piston Seal | 11 Exhaust Hose Pinch Ram |
| 4 32 mm (1-1/4") Ported Cap Assembly | 8 Valve Activation Spring | 12 Anodized & Powder Coated Assembly |



Assembly

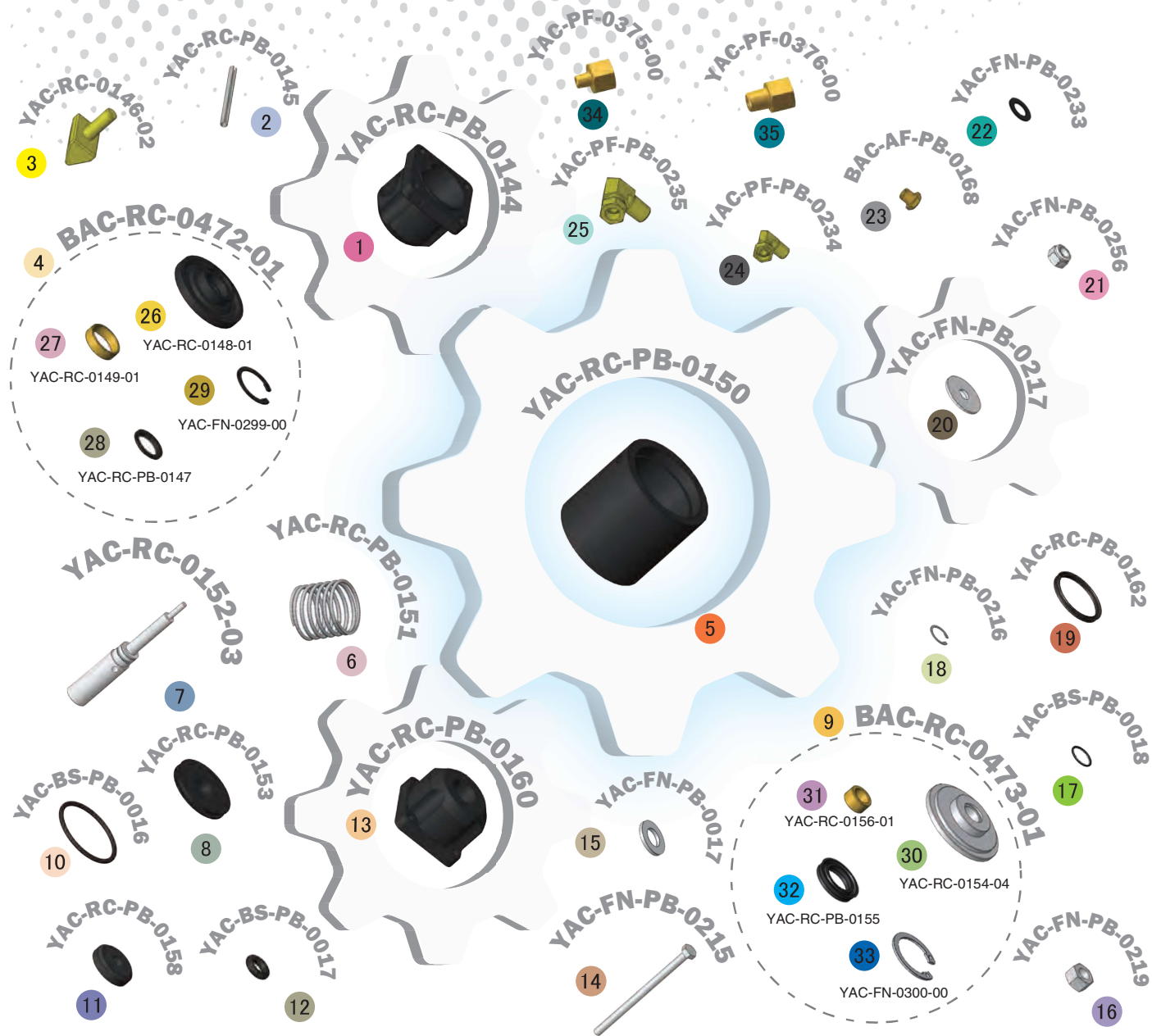
Stock Code	Description	Weight
BAC-RC-0143-02	Kombi NPT Remote Control Valve	4.3 kg (9.5 lbs)

Service Kits

Stock Code	Description	Include Items
BAC-RC-PB-0365	Kombi Valve Plug Assembly Kit	11 12 x2 20 21 22
BAC-RC-PB-0265	Kombi Valve Seal Service Kit	10 11 12 x2 17 18 19 21 22 28 29 32
BAC-RC-PB-0242	Kombi Valve End Cap Kit	1 2
BAC-RC-0584-00	Kombi NPT/BSP Fittings Kit	34 35
BAC-RC-PB-0163	Kombi Valve Service Kit	10 11 12 x2 17 18 19 20 28 32



All data and information subject to change without prior notice. Brochure reference CAT-0203-06-00



Parts List



Description	Qty	Description	Qty	Description	Qty
1 Cap	1	13 Base	1	25 Elbow With Nut - NPT	1
2 Pin	1	14 Hex Head Bolt	4	26 Upper Rod Guide	1
3 Pinch Ram	1	15 Flat Washer	8	27 Upper Rod Guide Bush	1
4 Kombi Upper Rod Guide Kit (Items 26, 27, 28 & 29)	1	16 Nut	4	28 Upper Seal	1
5 Cylinder	1	17 O-ring	1	29 Circlip	1
6 Spring	1	18 Circlip	1	30 Lower Rod Guide	1
7 Shaft	1	19 Piston Seal	1	31 Lower Rod Guide Bush	1
8 Piston	1	20 Flat Washer	1	32 Lower Seal	1
9 Kombi Lower Rod Guide Kit (Items 30, 31, 32 & 33)	1	21 Lock Nut	1	33 Circlip	1
10 O-Ring	1	22 Spring Washer	1	34 NPT Male To BSP Female Adaptor (Optional)	1
11 Valve Plug	1	23 Exhaust Filter Brass	1	35 NPT Male To BSP Female Adaptor (Optional)	1
12 O-ring	2	24 Elbow With Nut - NPT	1		