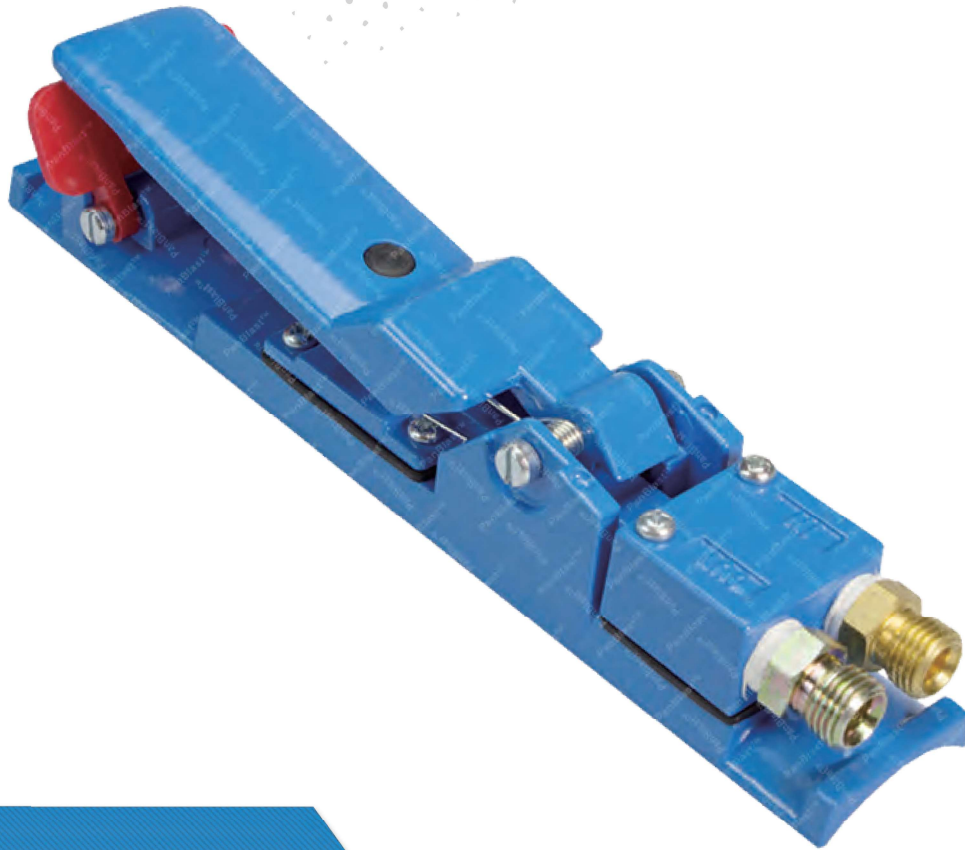




AirFlo Pneumatic Control Handle



Product Features

The PanBlast™ AirFlo Pneumatic Control Handle is a bleed-type handle, designed to operate with a twinline system to remotely supply and activate air to the blast pot remote control valves. The BSP configuration is compatible with most non-U.S. blasting equipment.

- ▶ Safe, 2-stage failsafe lock.
- ▶ Air-bleed at the handle on deactivation.
- ▶ BSP threaded connection.
- ▶ Service kits available.

Common Applications

- ▶ Standard fitment on PanBlast™ BP automatic Series pots.
- ▶ Recommended for use with PanBlast™ UniFlo Remote Control Valve.
- ▶ Upgrade/retrofitting of OEM remote control systems.

Complementary Products



Sola 5 Inlet Valve



Sola 10 Inlet Valve



Sola 30 Inlet Valve



UniFlo Remote Valve



QuikStop IIS Pneumatic Handle



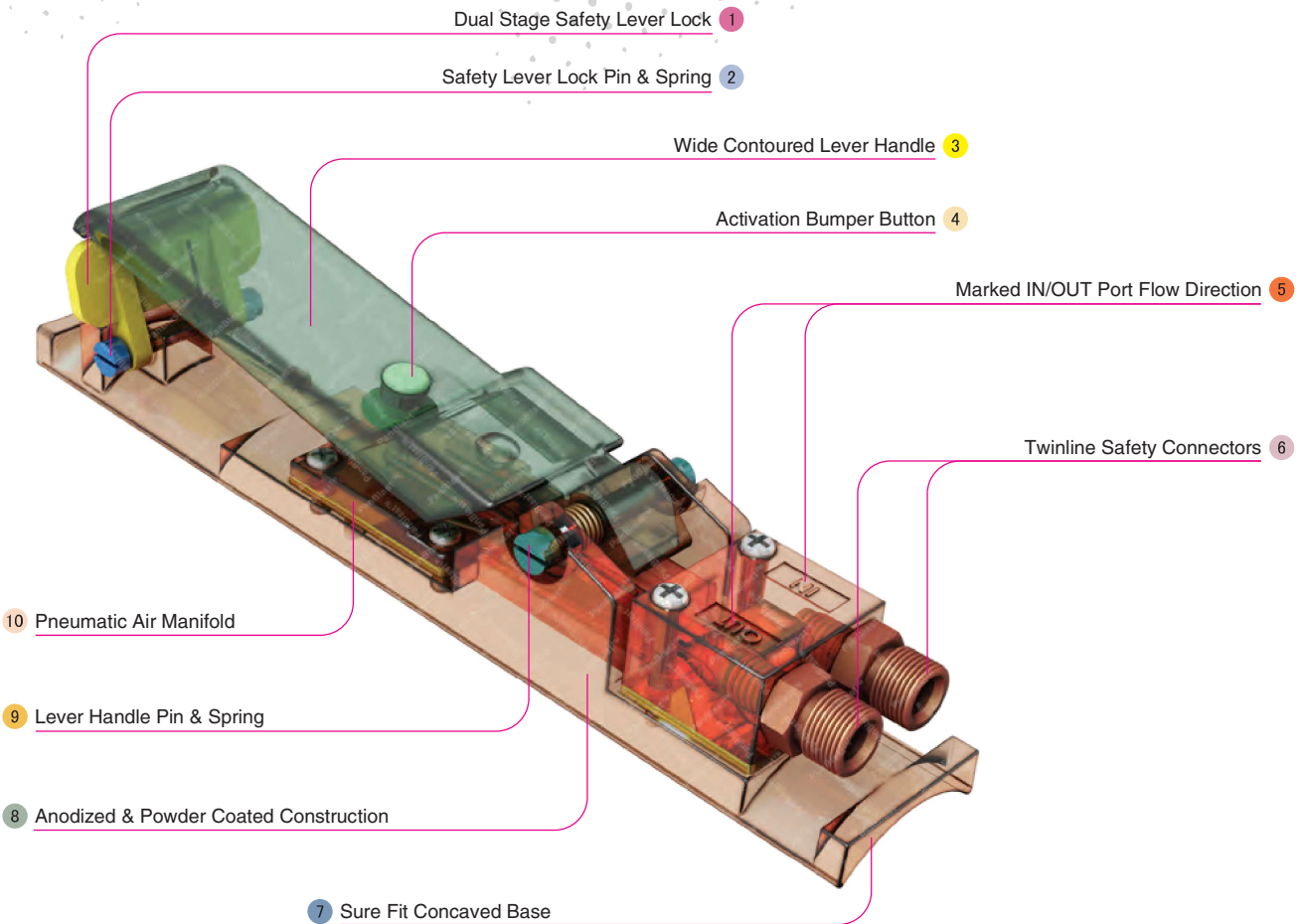
Helix 150 Remote Valve



Blast Hoses



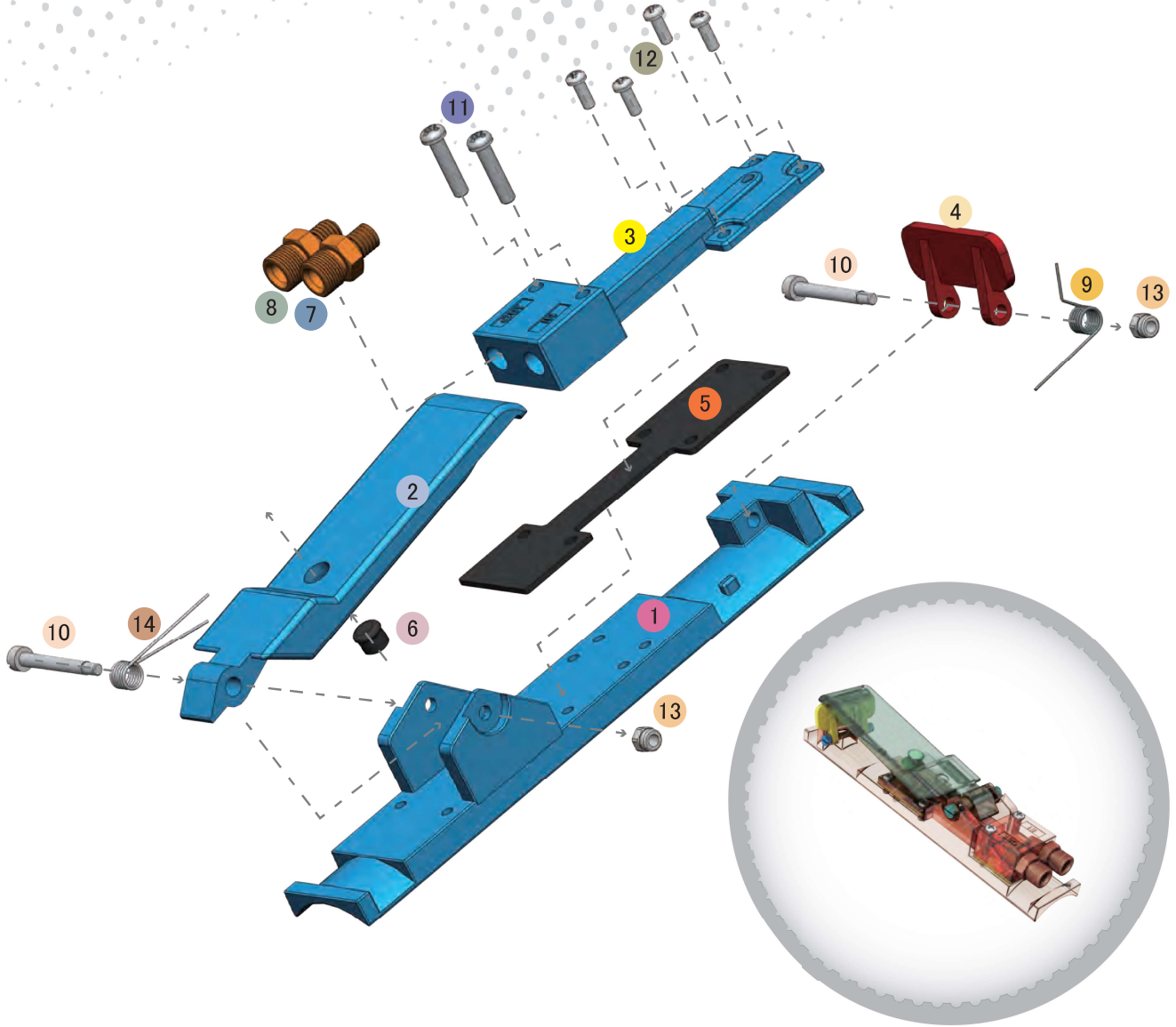
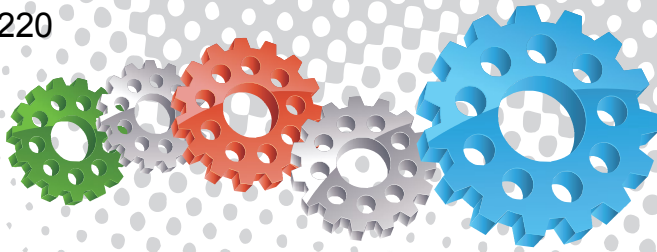
Twinline Hose



Component Highlights



- | | | |
|----------------------------------|---|-----------------------------|
| 1 Dual Stage Safety Lever Lock | 5 Marked IN/OUT Port Flow Direction | 9 Lever Handle Pin & Spring |
| 2 Safety Lever Lock Pin & Spring | 6 Twinline Safety Connectors | 10 Pneumatic Air Manifold |
| 3 Wide Contoured Lever Handle | 7 Sure Fit Concaved Base | |
| 4 Activation Bumper Button | 8 Anodized & Powder Coated Construction | |



Assembly

Stock Code	Description	Weight
BAC-RC-PB-0085	AirFlo Pneumatic Control Handle	0.43 kg (0.95 lbs)

Service Kits

Stock Code	Description	Include Items
BAC-RC-PB-0011	AirFlo Handle Service Kit	2 4 5 6 x6 9 14
BAC-RC-PB-0116	AirFlo Bumper Kit	6 x6
BAC-RC-PB-0117	AirFlo Lever Spring Kit	14 x6



All data and information subject to change without prior notice. Brochure reference: CAT-0301-02-00



Parts List



Description	Qty	Description	Qty	Description	Qty
1 Body	1	6 Bumper Button	1	11 Screw	2
2 Lever	1	7 Nipple-Restricted	1	12 Screw	4
3 Pneumatic Manifold	1	8 Nipple-Un-Restricted	1	13 Lock Nut	2
4 Lever Safety Lock	1	9 Safety Lock Spring	1	14 Lever Spring	1
5 Gasket	1	10 Screw	2		