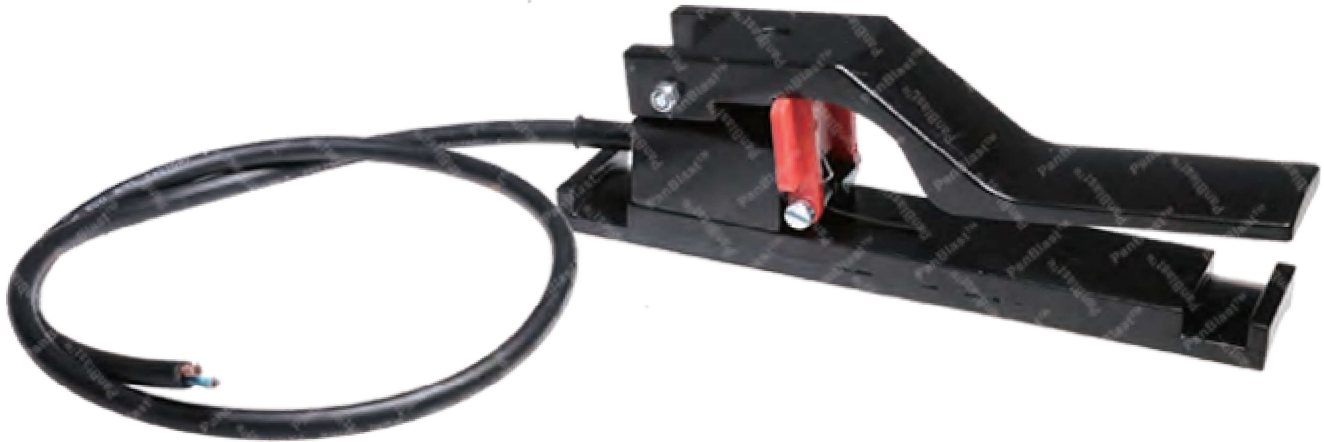




AirStop II Electric Control Handle



Product Features

The PanBlast™ AirStop II Electric Remote Control Handle provides the same simple, reliable operation as the original AirStop Electric Handle, and incorporates new features for operator comfort and safety.

- ▶ 12V or 24V operation.
- ▶ Other voltages available on request.
- ▶ Ergonomic handle design.
- ▶ Long-travel, spring-loaded safety lever.
- ▶ Deadman style operation for safety.

Common Applications

- ▶ Long-blasting hose applications.
- ▶ Replacement of OEM electric control handles.

Complementary Products



Kombi Remote Valve



Kombi II Remote Valve



Corsa II Valve



Tandem Inlet Valve



AirFlo Pneumatic Handle



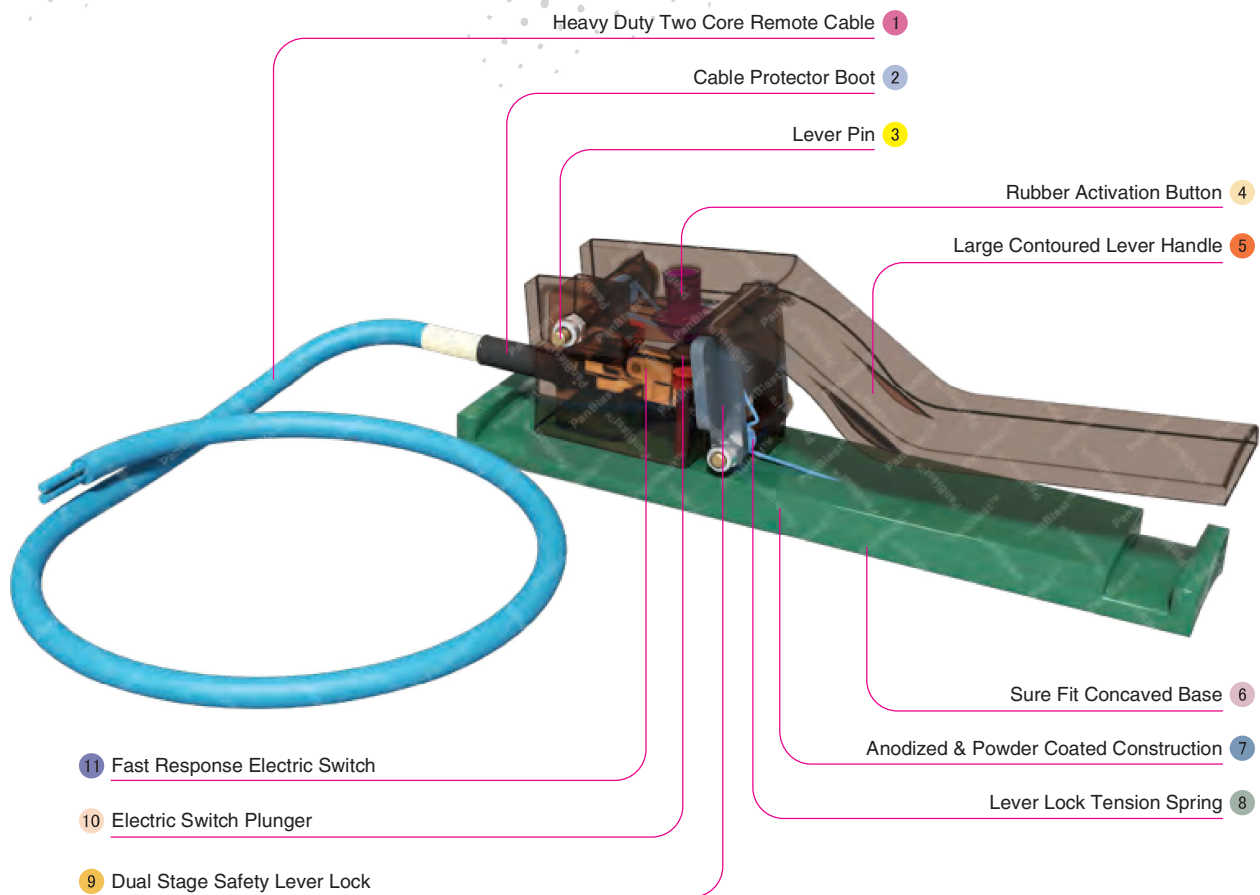
Corsa Valve



Blast Hoses



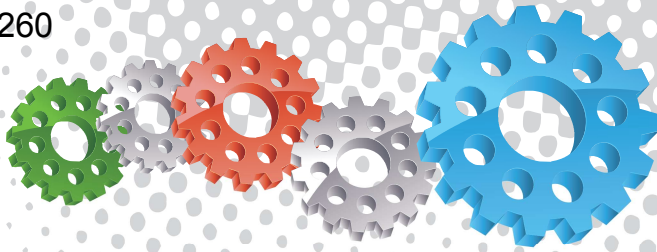
Electric Remote Systems



Component Highlights



- | | | |
|------------------------------------|---|----------------------------------|
| 1 Heavy Duty Two Core Remote Cable | 5 Large Contoured Lever Handle | 9 Dual Stage Safety Lever Lock |
| 2 Cable Protector Boot | 6 Sure Fit Concaved Base | 10 Electric Switch Plunger |
| 3 Lever Pin | 7 Anodized & Powder Coated Construction | 11 Fast Response Electric Switch |
| 4 Rubber Activation Button | 8 Lever Lock Tension Spring | |



Assembly

Stock Code	Description	Weight
BAC-RC-0356-02	AirStop II Electric Control Handle	0.52 kg (1.14 lbs)



All data and information subject to change without prior notice. Brochure reference: CAT-0303-03-00



Parts List



Description	Qty	Description	Qty	Description	Qty
1 Screw	1	8 Electric Switch	1	15 Cable	1
2 Lever	1	9 Switch Protector	1	16 Cable Protect	1
3 Lever Spring	1	10 Screw	1	17 Half Clamp	1
4 Lock Nut	2	11 Base	1	18 Screw	2
5 Bumper Button	1	12 Lever Safety Lock	1	19 Button Cap	1
6 Screw	3	13 Screw	1	20 Flat Washer	2
7 Switch Holder	1	14 Spring Safety Lock	1		