



AirStop II NPT Pneumatic Control Handle



Product Features

The PanBlast™ AirStop II NPT Pneumatic Remote Control Handle is a non-bleed type handle, offering the same simplicity as the original AirStop handle, and incorporates new features to improve operator comfort and safety. The NPT configuration is compatible with most U.S. blasting equipment.

- ▶ Ergonomic lever design.
- ▶ Long-travel, spring loaded safety lever.
- ▶ Simple, economical remote control.
- ▶ Service kit available.

Common Applications

- ▶ Recommended for use with PanBlast™ Kombi Remote Control Valves.
- ▶ Upgrade of OEM non-bleed pneumatic remote control systems.

Complementary Products



Kombi Remote Valve



Kombi II Remote Valve



Corsa II Valve



Tandem Inlet Valve



AirFlo Pneumatic Handle



Corsa Valve



Blast Hoses



Twinline Hose

1 Twinline Safety Connectors

2 Activation Bumper Button

3 Pneumatic Plunger Assembly

4 Large Profile "Easy Grip" Lever Handle

5 Blast Hose Attachment Point

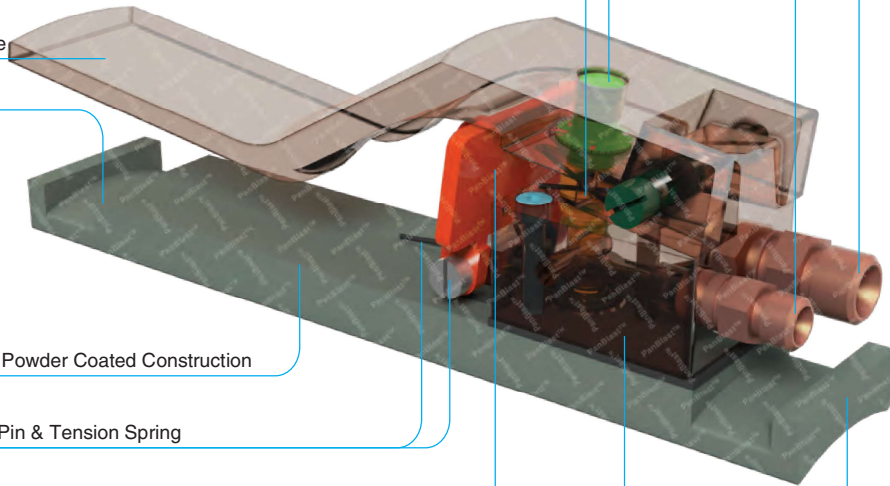
6 Anodized & Powder Coated Construction

7 Lever Lock Pin & Tension Spring

8 Dual Stage Safety Lever Lock

9 Manifold Body

10 Sure Fit Concaved Base



Component Highlights



1 Twinline Safety Connectors

5 Blast Hose Attachment Point

9 Manifold Body

2 Activation Bumper Button

6 Anodized & Powder Coated Construction

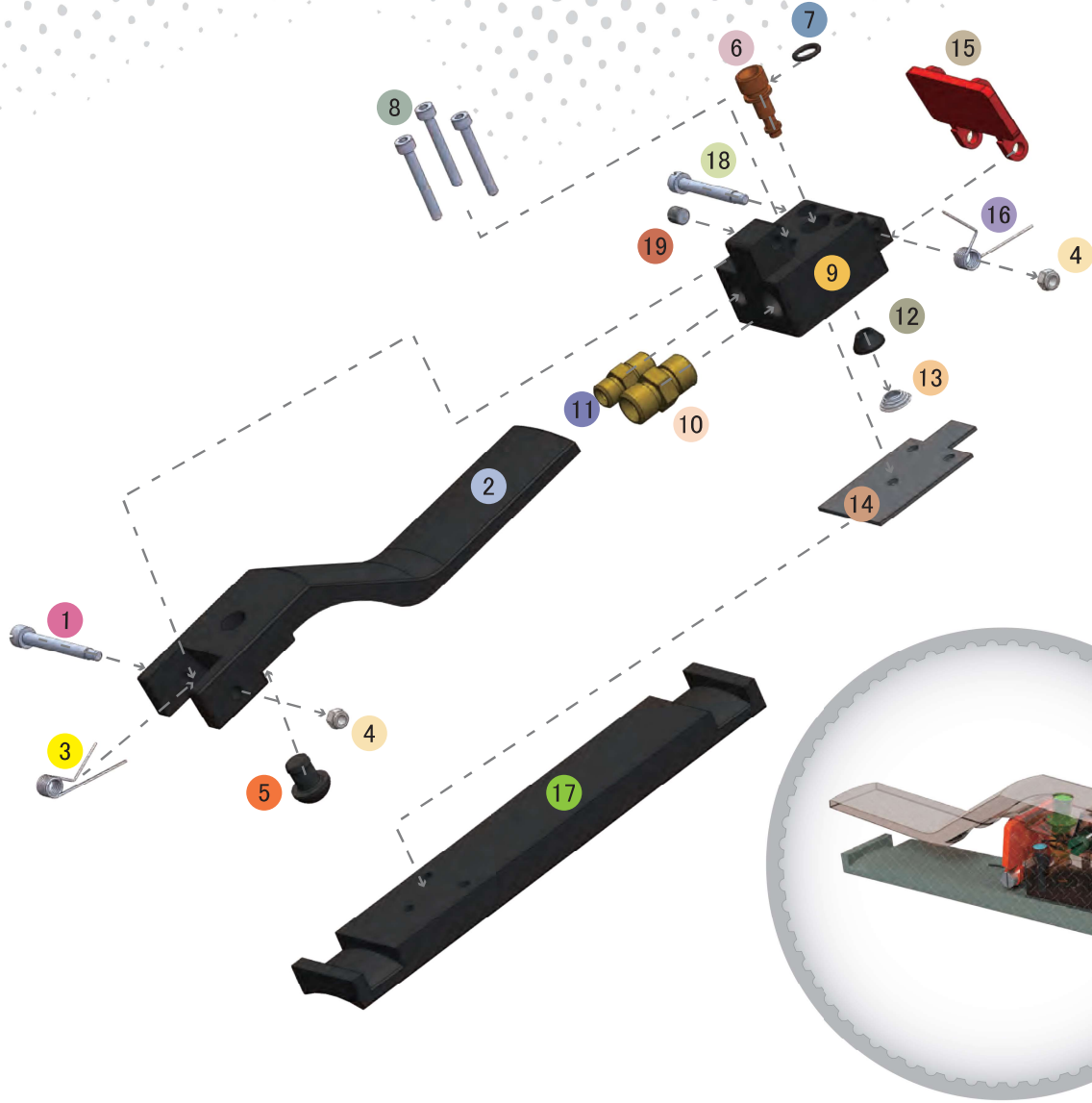
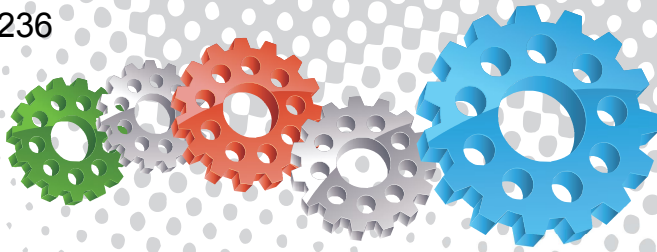
10 Sure Fit Concaved Base

3 Pneumatic Plunger Assembly

7 Lever Lock Pin & Tension Spring

4 Large Profile "Easy Grip" Lever Handle

8 Dual Stage Safety Lever Lock



Assembly

Stock Code	Description	Weight
BAC-RC-PB-0164	AirStop II NPT Pneumatic Control Handle	0.52 kg (1.14 lbs)

Service Kit

Stock Code	Description	Include Items
BAC-RC-PB-0235	AirStop II NPT Service Kit	5 6 7 9 12 13 14 19



All data and information subject to change without prior notice. Brochure reference: CAT-0302-03-00



Parts List



Description	Qty	Description	Qty	Description	Qty
1 Screw	1	8 Screw	3	15 Lever Safety Lock	1
2 Lever	1	9 Manifold	1	16 Spring Safety Lock	1
3 Lever Spring	1	10 Nipple-NPT	1	17 Base	1
4 Lock Nut	2	11 Nipple-NPT/NPSM	1	18 Screw	1
5 Bumper Button	1	12 Plunger Plug	1	19 Screw	1
6 Plunger	1	13 Plunger Spring	1		
7 O-ring	1	14 Gasket	1		