



## AirStop IV NPT Pneumatic Control Handle



### Product Features

The PanBlast™ AirStop IV NPT Pneumatic Control Handle is a pneumatic non-bleed control handle, suitable for safe start/stop operation of remote control systems. Compliant to OSHA 1915.34(c) (1) (iv) remote control requirements, the AirStop IV configuration is compatible with most U.S. type blasting equipment.

- ▶ Contoured Activation Lever.
- ▶ Spring Loaded Safety Lock-Out Button.
- ▶ Ultra-light weight design.

▶ Concaved Base for secure fitment.

### Common Applications

- ▶ General blast yard / site operations.
- ▶ On shore – Off Shore oil & gas maintenance projects.
- ▶ Fabrication & construction yards.
- ▶ Bridge maintenance and construction.

### Complementary Products



Kombi Remote Valve



Kombi II Remote Valve



Corsa II Valve



Tandem Inlet Valve



AirFlo Pneumatic Handle



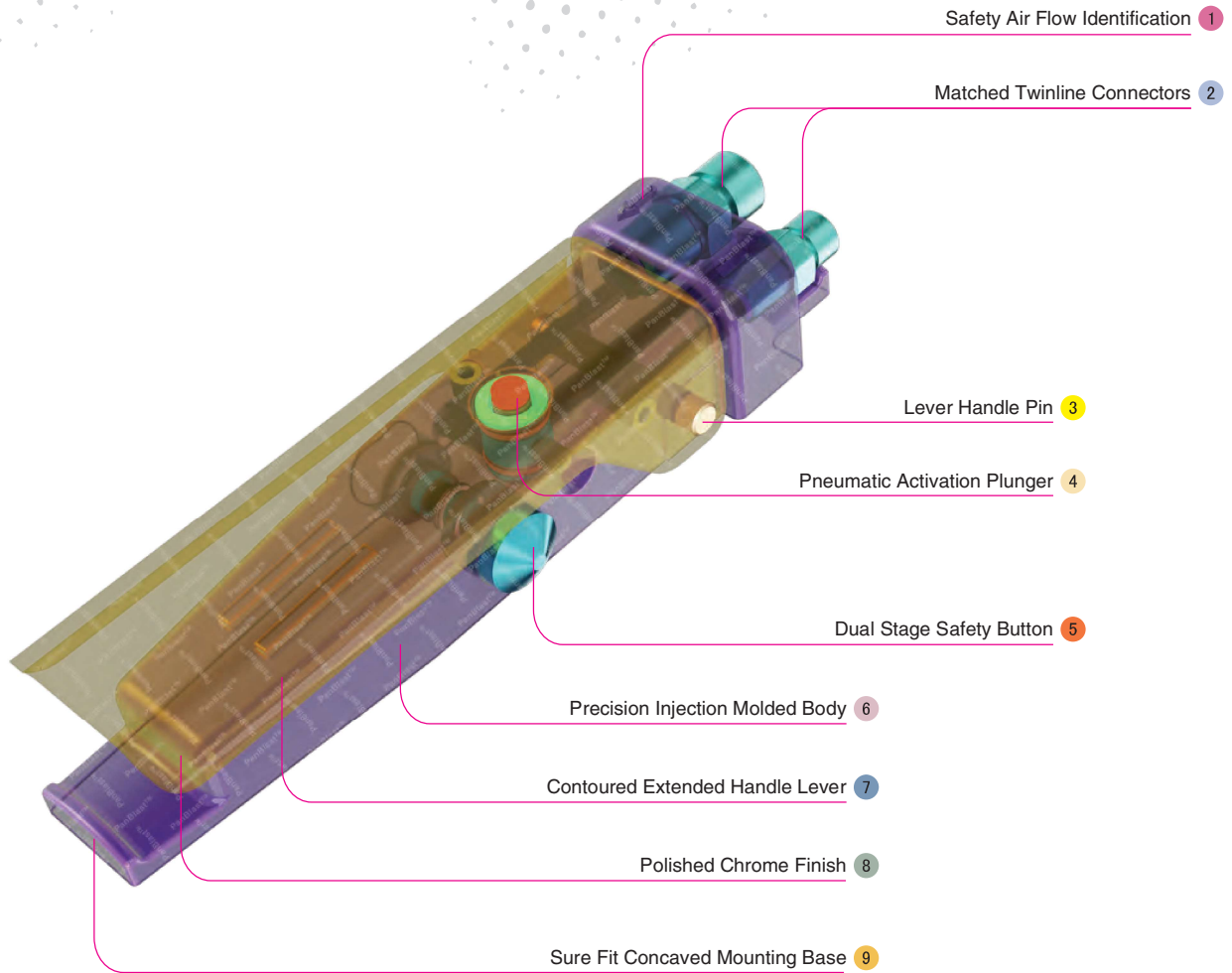
Corsa Valve



Blast Hoses



Twinline Hose



## Component Highlights



1 Safety Air Flow Identification

4 Pneumatic Activation Plunger

7 Contoured Extended Handle Lever

2 Matched Twinline Connectors

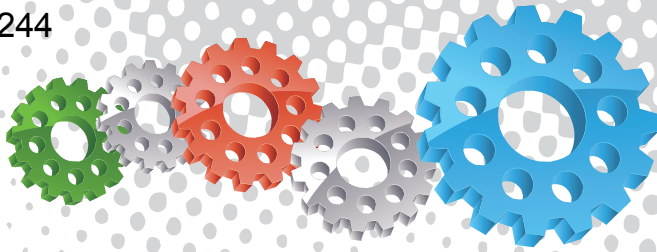
5 Dual Stage Safety Button

8 Polished Chrome Finish

3 Lever Handle Pin

6 Precision Injection Molded Body

9 Sure Fit Concaved Mounting Base



## Assembly

Stock Code	Description	Weight
BAC-RC-0549-00	AirStop IV NPT Pneumatic Control Handle	0.28 kg (0.62 lbs)

## Service Kits

Stock Code	Description	Include Items
BAC-RC-0550-00	AirStop IV NPT Service Kit	<span style="border: 1px solid black; border-radius: 50%; padding: 2px;">3</span> <span style="border: 1px solid black; border-radius: 50%; padding: 2px;">8</span> <span style="border: 1px solid black; border-radius: 50%; padding: 2px;">9</span> <span style="border: 1px solid black; border-radius: 50%; padding: 2px;">10</span> <span style="border: 1px solid black; border-radius: 50%; padding: 2px;">11</span> <span style="border: 1px solid black; border-radius: 50%; padding: 2px;">13</span> <span style="border: 1px solid black; border-radius: 50%; padding: 2px;">14</span>



All data and information subject to change without prior notice. Brochure reference: CAT-0302-05-00



## Parts List



Description	Qty	Description	Qty	Description	Qty
1 Hinge Pin	1	6 Nipple-NPT/NPSM	1	11 Plunger Sleeve	1
2 Lever	1	7 Nipple-NPT/NPSM	1	12 Button	1
3 Screw	1	8 Plunger	1	13 Spring	1
4 Screw	4	9 Plunger Plug	2	14 Screw	1
5 Body	1	10 O-Ring	2		