



CS48 Blast Cabinets



Product Features

The PanBlast™ CS48 Blast Cabinet is an economical, light duty blast cabinet, ideally suited to lower production applications or intermittent use. Abrasives commonly used with the CS48 include:

- FastBlast™ Chilled Iron Grit.
- QuickCut™ Aluminium Oxide.
- BrightBlast™ Glass Beads.
- EnviroGrit™ Garnet.
- PanaGrit™ Steel Grit.

- ▶ High performance suction gun assembly.
- ▶ 3 mm (1/8") air tip with 6 mm (1/4") blast nozzle.
- ▶ 1200 watt high performance dust collector with replaceable dry filter cartridge.
- ▶ Extra large 575 mm (22.6") x 265 mm (10.4") viewing window.
- ▶ Tear-off window and cabinet light covers.
- ▶ Compressed air regulator and gauge assembly included.
- ▶ Simple, robust foot pedal blast control.
- ▶ Adjustable abrasive feed.

Common Applications

- ▶ De-scale and de-rust metal surfaces.
- ▶ Remove paint and powder coating.
- ▶ De-burr and de-flash castings and moldings.
- ▶ Decorative finishing of non-ferrous metals.
- ▶ Glass and stone etching.

Complementary Products



Delta SNH Manual Blast Gun



Delta SNH Auto Blast Gun



PB500HD Blast Cabinet



PB500ES Blast Cabinet



PB1000HD Blast Cabinet



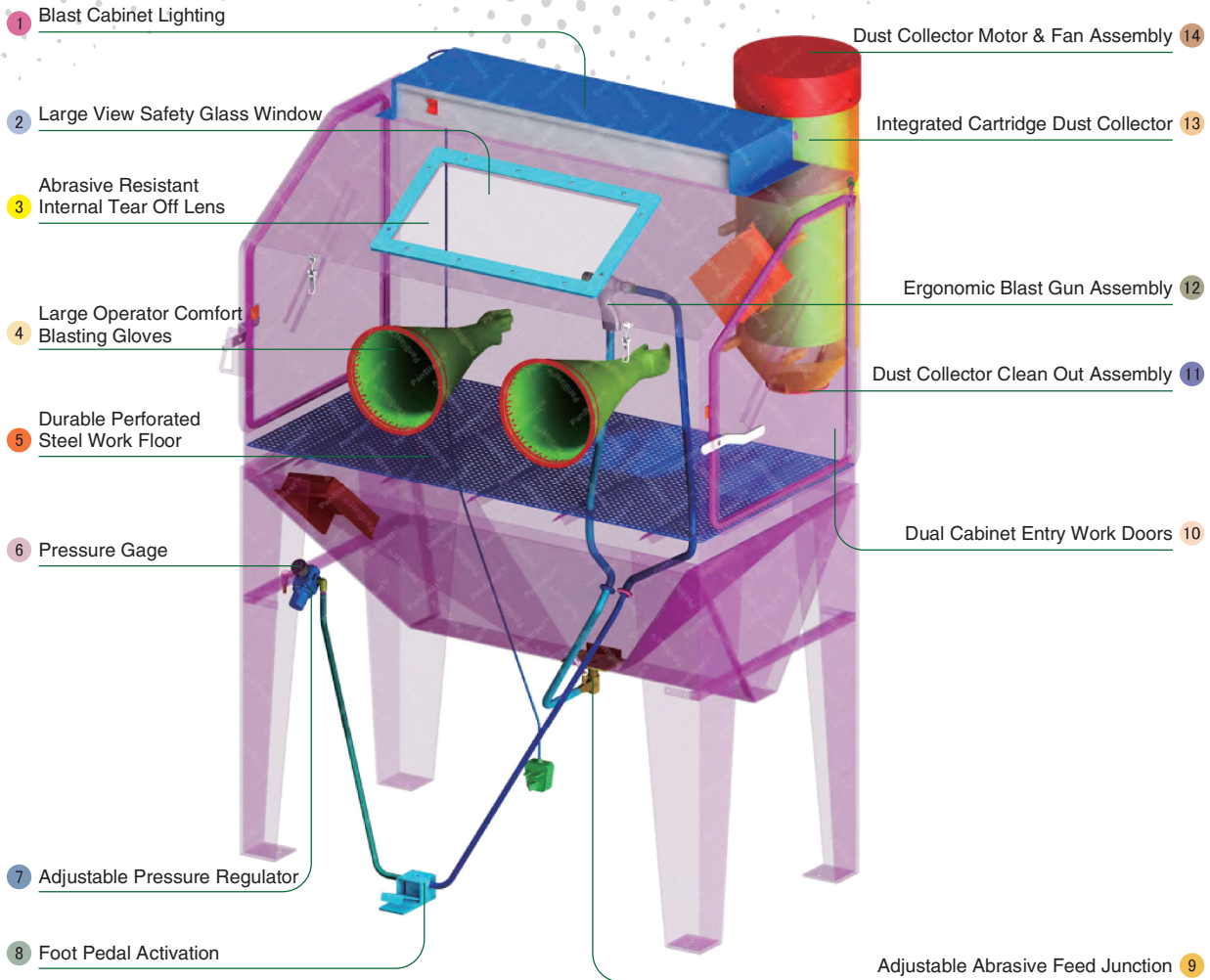
PB1000SP Blast Cabinet



PB1000P Blast Cabinet



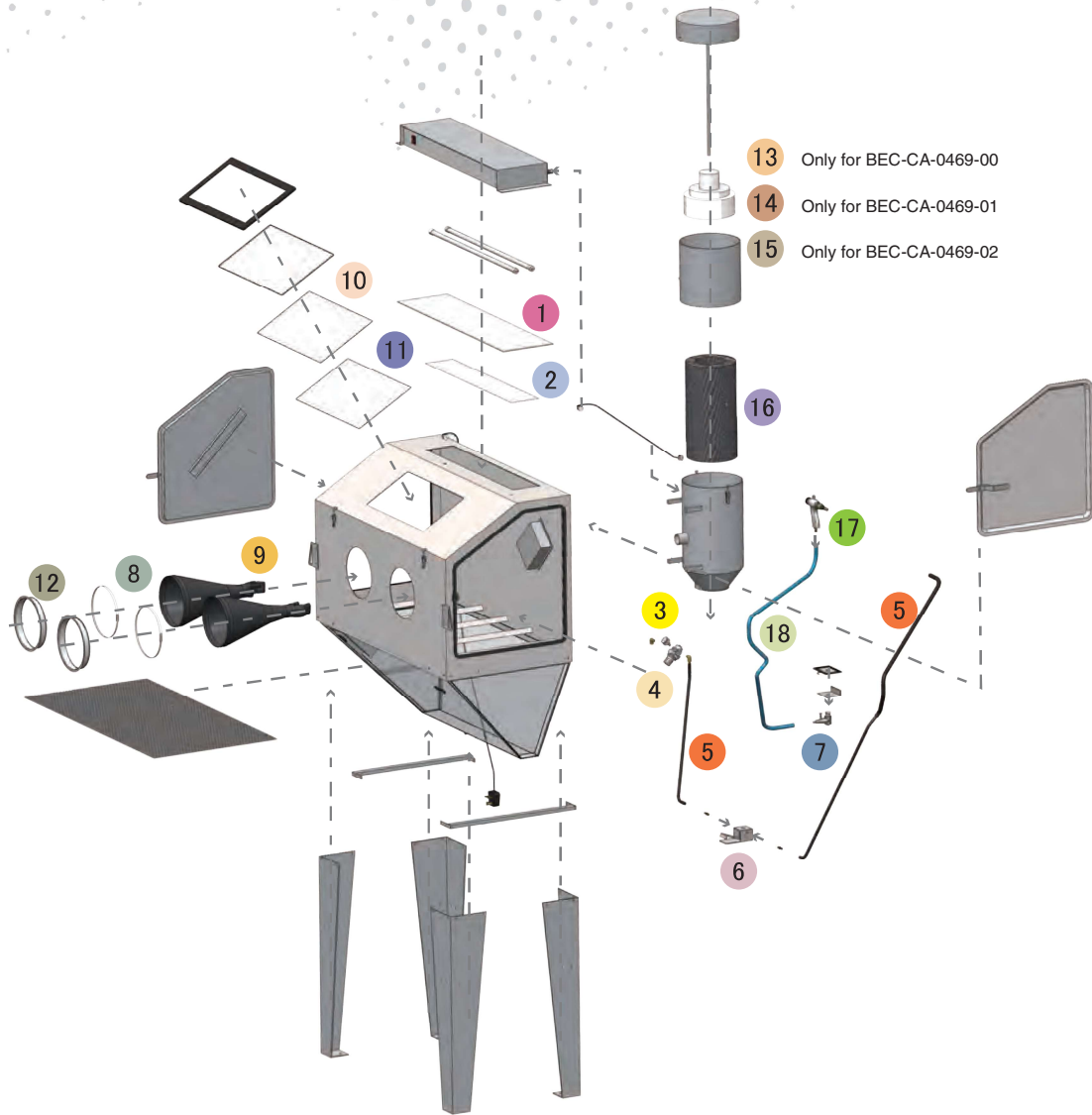
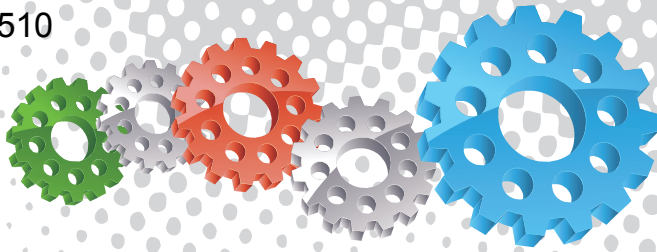
PB1500HD Blast Cabinet



Component Highlights



- | | | |
|---|-------------------------------------|--|
| 1 Blast Cabinet Lighting | 6 Pressure Gage | 11 Dust Collector Clean Out Assembly |
| 2 Large View Safety Glass Window | 7 Adjustable Pressure Regulator | 12 Ergonomic Blast Gun Assembly |
| 3 Abrasive Resistant Internal Tear Off Lens | 8 Foot Pedal Activation | 13 Integrated Cartridge Dust Collector |
| 4 Large Operator Comfort Blasting Gloves | 9 Adjustable Abrasive Feed Junction | 14 Dust Collector Motor & Fan Assembly |
| 5 Durable Perforated Steel Work Floor | 10 Dual Cabinet Entry Work Doors | |



- 13 Only for BEC-CA-0469-00
- 14 Only for BEC-CA-0469-01
- 15 Only for BEC-CA-0469-02

Assemblies

Stock Code	Description	Weight
BEC-CA-0469-00	CS48 Blast Cabinet - 110VAC	125 kg (275.58 lbs)
BEC-CA-0469-01	CS48 Blast Cabinet - 230VAC	125 kg (275.58 lbs)
BEC-CA-0469-02	CS48 Blast Cabinet (CE)- 230VAC	155 kg (341.72 lbs)

Optional Accessories

Stock Code	Description
BAC-CA-0502-00	Cabinet Cyclone Conversion Kit
BAC-BG-0102-00	Delta-A Gun CS 1/8 x 1/4 Tungsten Nozzle
BAC-BG-0114-00	Delta-M Gun CS 1/8 x 1/4 Tungsten Nozzle



All data and information subject to change without prior notice. Brochure reference CAT-0601-03-00

Parts List

Item	Stock Code	Description	Qty
1	BAC-CA-0478-00	Window	1
2	BAC-CA-0526-00	Light Window Cover	1
3	BAC-PF-PB-0213	3 mm (1/8") Pressure Gauge – Rear Entry	1
4	YAC-AF-PB-0018	3/8" Regulator	1
5	BAC-AF-0377-00	1/2" Air Hose	3.5 m
6	BAC-CA-0479-00	Foot Pedal	1
7	BAC-CA-0515-00	Metering Valve	1
8	BAC-CA-0480-00	Glove Clamps	2
9	BAC-GL-0006-00	Cabinet Gloves	1 pr
10	BAC-CA-0481-00	Glass Window	1
11	BAC-CA-0482-00	Window Cover	1
12	BAC-CA-0513-00	Glove Entry Ring	2
13	BAC-DC-0036-00	Dust Collector Motor -110VAC	1
14	BAC-DC-0037-00	Dust Collector Motor -230VAC	1
15	BAC-DC-0037-01	Dust Collector Motor -230VAC/1KW CE	1
16	BAC-DF-0022-00	Dust Collector Filter	1
17	BAC-BG-0097-00	CS48 Gun Assembly with 6 mm Ceramic Nozzle	1
18	BAC-CA-0507-00	Abrasives Delivery Hose	2 m

Technical Data



- Shipping Size:**
 1270 mm (50") Wide 1250 mm (49") Deep
 760 mm (30") High
- Internal Size:**
 1215 mm (48") Wide 610 mm (24") Deep
 575 mm (23") High
- Door Size:**
 Side Door: 500 mm (20") Wide 490 mm (19") High
 Top Door: 1150 mm (45") Wide 300 mm (12") High
- Air Consumption:**
 8.5L/Sec (18 cfm) @550kPa (80 psi)
- Blast Nozzle Size:**
 6 mm Ceramic Nozzle
- Cabinet Light:**
 2 x 18 Watt 230V 50Hz
 2 x 18 Watt 110V 50Hz
- Cabinet Overall Dimension:**
 1320 mm (52") Wide 930 mm (37") Deep
 1670 mm (66") High
- Recommended Floor Area:**
 3100 mm (122") Wide 1900 mm (75") Deep
- Window Size:**
 575 mm (23") Wide 265 mm (10") High
- Air Supply Line:**
 10 mm (3/8")
- Electrical Power:**
 1Kw 230VAC 1 Phase
 1Kw 110VAC 1 Phase

