



Corsa II Valves With Urethane Sleeve



Product Features

The PanBlast™ Corsa II Valve is an improved, normally closed abrasive metering valve requiring a pilot air signal to permit abrasive flow. The valve may be used on both pressure hold blast pots and pressure release blast pots. The BSP version is intended for connection with most non-US equipment and is available in various sizes and multiple configurations.

- ▶ Quick valve actuation.
- ▶ Anti-vibration washer.
- ▶ Exhaust filter prevents dust from entering air chamber.
- ▶ Solid tungsten carbide plunger.
- ▶ Hardened connecting pipe nipple.
- ▶ Piston travel stop nut.
- ▶ Improved plunger seat and piston design.
- ▶ Stainless steel internal parts.
- ▶ Clean out/drain port.
- ▶ Graduation markings.

Common Applications

- ▶ Pressure hold blast pots and multiple outlet blast pots.
- ▶ Pressure release blast pots, to prevent unwanted filling of blast hose.

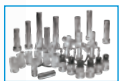
Complementary Products



Couplings & Nozzle Holders



AirStop II Pneumatic Handle



Blast Nozzles



Plastic Media



Whip Check Cables



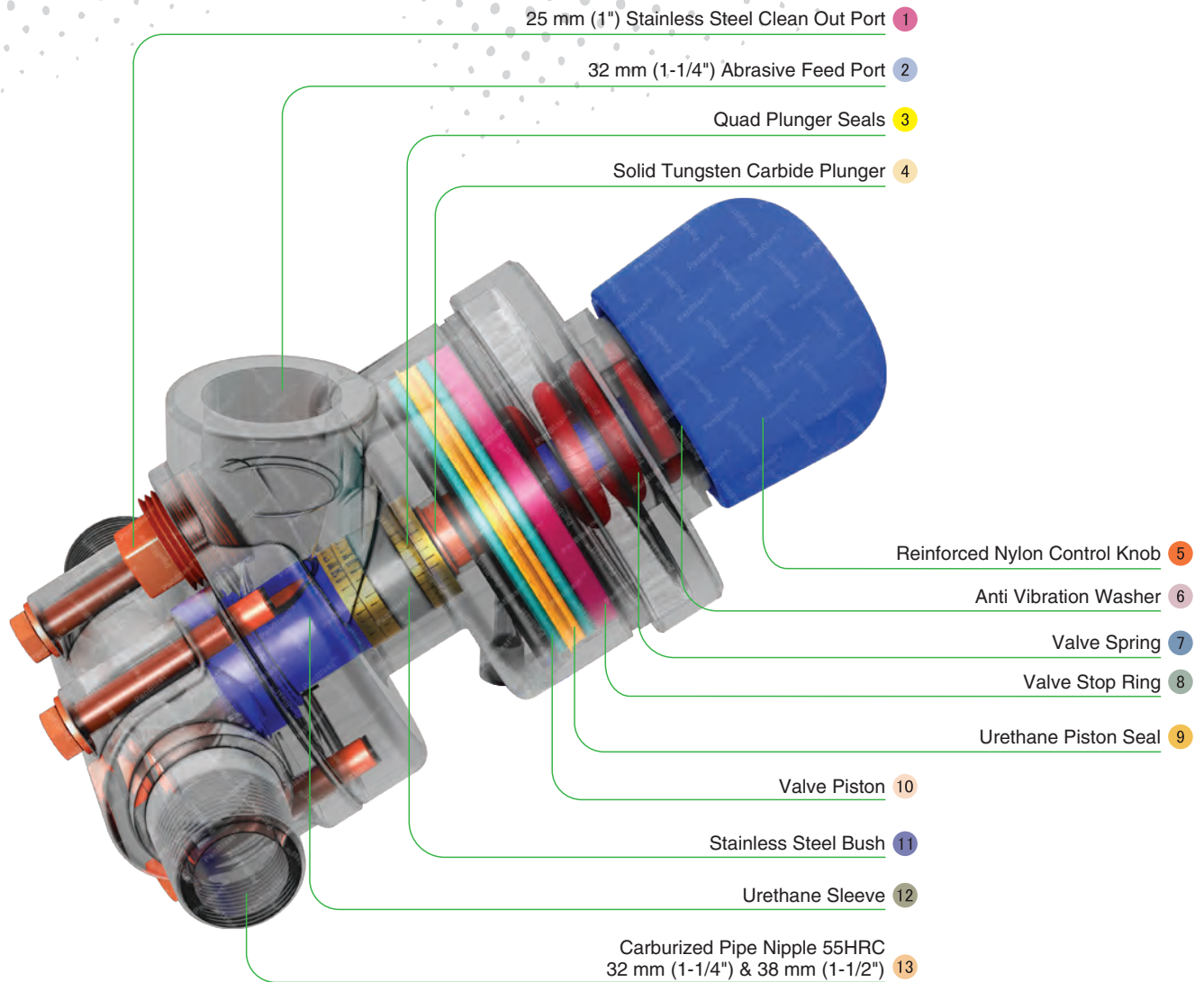
Steel Shot



Blast Hoses



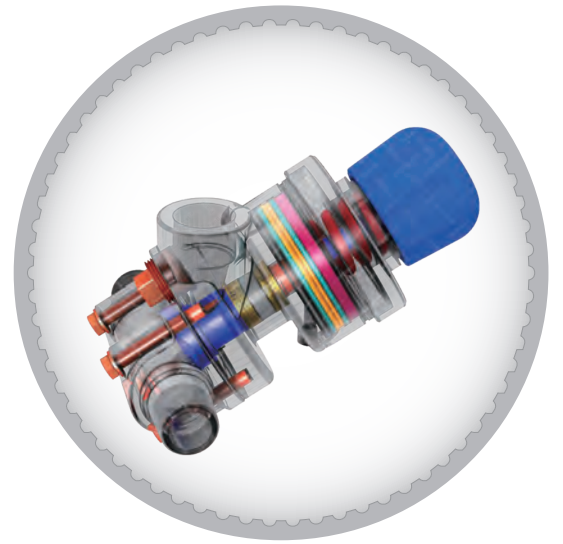
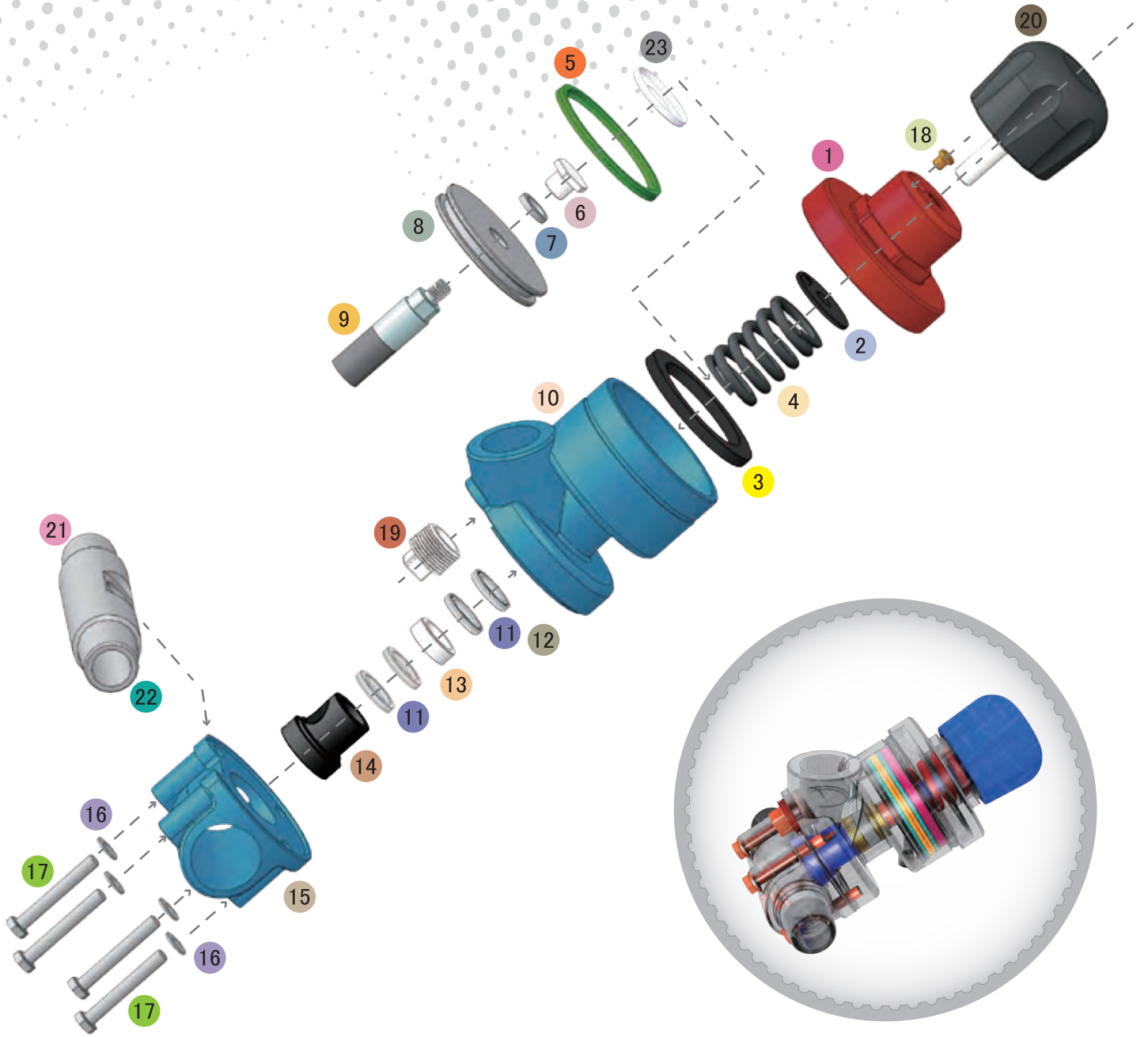
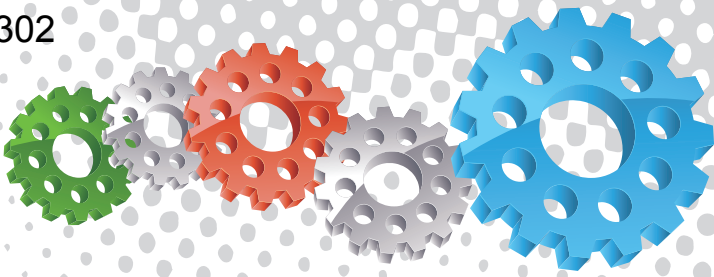
Stainless Steel Shot



Component Highlights



- | | | |
|---|-------------------------|--|
| 1 25 mm (1") Stainless Steel Clean Out Port | 6 Anti Vibration Washer | 11 Stainless Steel Bush |
| 2 32 mm (1-1/4") Abrasive Feed Port | 7 Valve Spring | 12 Urethane Sleeve |
| 3 Quad Plunger Seals | 8 Valve Stop Ring | 13 Carburized Pipe Nipple 55HRC
32 mm (1-1/4") & 38 mm (1-1/2") |
| 4 Solid Tungsten Carbide Plunger | 9 Urethane Piston Seal | |
| 5 Reinforced Nylon Control Knob | 10 Valve Piston | |



Assemblies

Stock Code	Description	Weight
BAC-VA-PB-0117	Corsa II Valve 1-1/4" With Urethane Sleeve	5.90 kg (12.98 lbs)
BAC-VA-PB-0118	Corsa II Valve 1-1/2" With Urethane Sleeve	6.10 kg (13.42 lbs)

Service Kits

Stock Code	Description	Include Items
BAC-VA-PB-0119	Corsa II Urethane Seal Kit	5 11 12 13 14
BAC-VA-PB-0139	Corsa II Piston Kit	2 3 4 5 6 7 8
BAC-VA-PB-0140	Corsa II Valve Base Kit	15 16 17
BAC-VA-PB-0223	Corsa II NPT Urethane Sleeve Kit	5 11 12 14



LIKE US ON FACEBOOK
www.facebook.com/panblast

FOLLOW US ON TWITTER
Ask ACE!@PanBlast

500 FIND US ON 500PX
500px.com/panblast

All data and information subject to change without prior notice. Brochure reference CAT-0702-03-01



Parts List



Description	Qty	Description	Qty	Description	Qty
1 Top Cover	1	9 Tungsten Plunger	1	17 Hex Head Bolt	4
2 Anti-Vibration Washer	1	10 Cylinder	1	18 Exhaust Filter	1
3 Stop Ring	1	11 Plunger Seal	4	19 Plug - Stainless Steel	1
4 Spring	1	12 O-Ring	2	20 Control Knob	1
5 Piston Seal	1	13 Bush	1	21 Corsa 1-1/4" x 1-1/4" Pipe Nipple (Applicable to valve BAC-VA-PB-0117)	1
6 Plunger Cover	1	14 Urethane Sleeve	1	22 Corsa 1-1/2" x 1-1/2" Pipe Nipple (Applicable to valve BAC-VA-PB-0118)	1
7 Nylon Washer	1	15 Base	1	23 Spring Seat	1
8 Piston	1	16 Flat Washer	4		