



Corsa NPT Valves With Tungsten Sleeve



Product Features

The original PanBlast™ Corsa valve is a normally closed abrasive metering valve requiring a pilot air signal to permit abrasive flow. The valve may be used on both pressure hold blast pots and pressure release blast pots. The NPT version is intended for connection with most US equipment and is available in various sizes and multiple configurations.

- ▶ Quick valve actuation.
- ▶ Precise sealing.
- ▶ Exhaust filter prevents dust from entering air chamber.
- ▶ Easy assembly and disassembly.
- ▶ Hardened connecting nipple.
- ▶ Improved carbide plunger seat sleeve provides longer feed orifice life.
- ▶ Improved plunger seat and piston design.

Common Applications

- ▶ Pressure hold blast pots and multiple outlet blast pots.
- ▶ Pressure release blast pots, to prevent unwanted filling of blast hose.

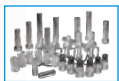
Complementary Products



Couplings & Nozzle Holders



AirStop II Pneumatic Handle



Blast Nozzles



Plastic Media



Whip Check Cables



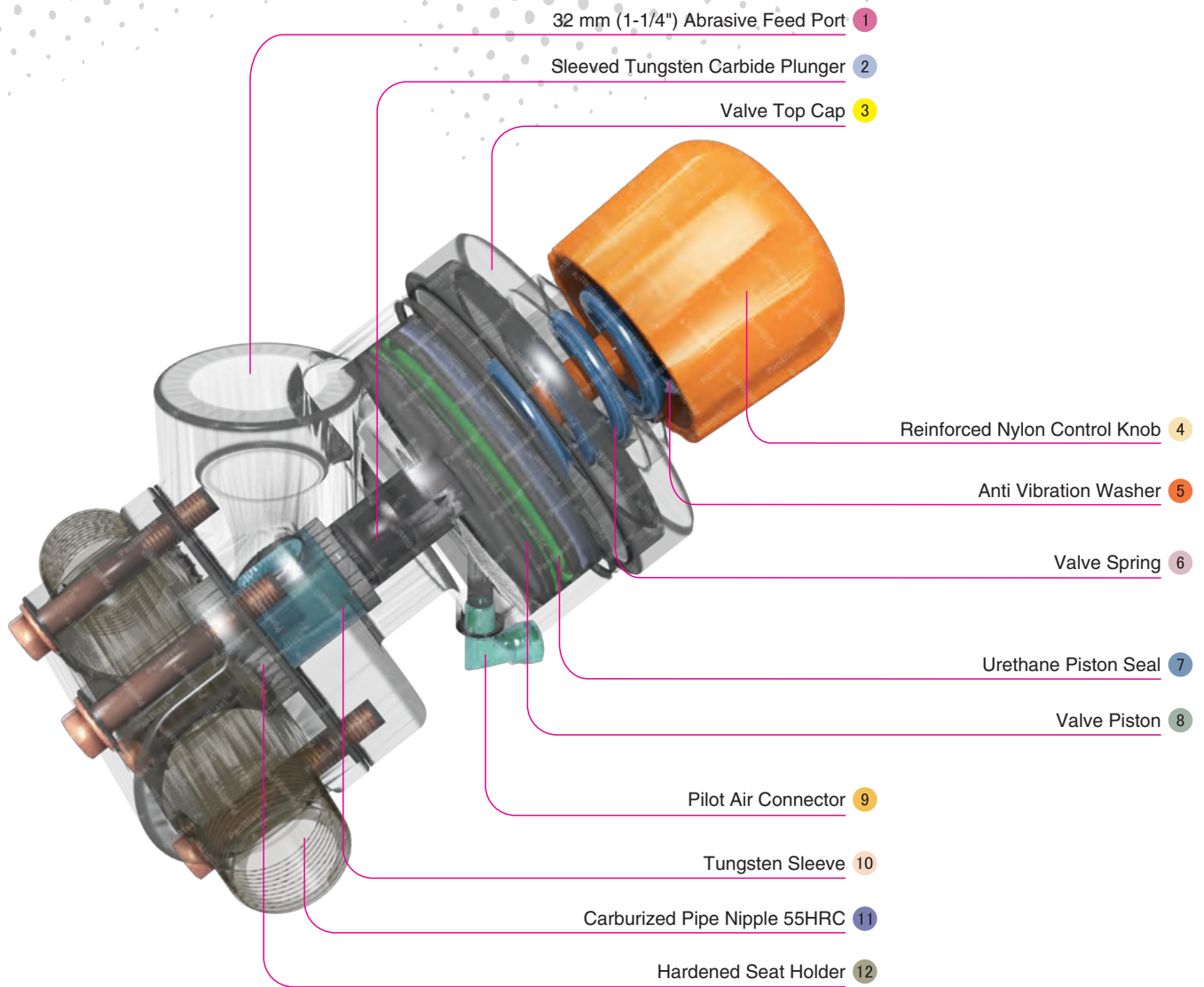
Steel Shot



Blast Hoses



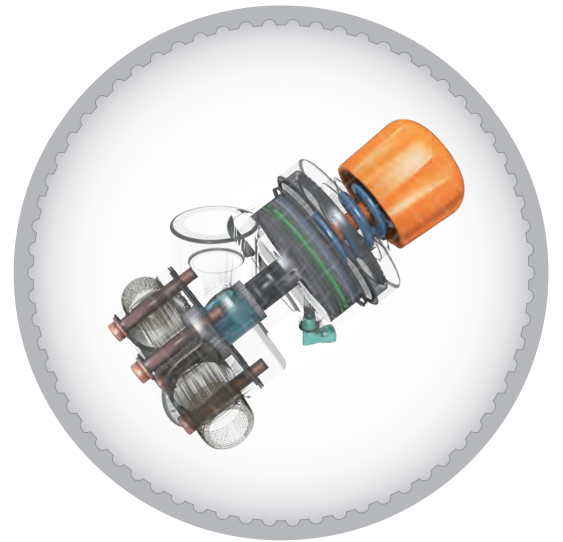
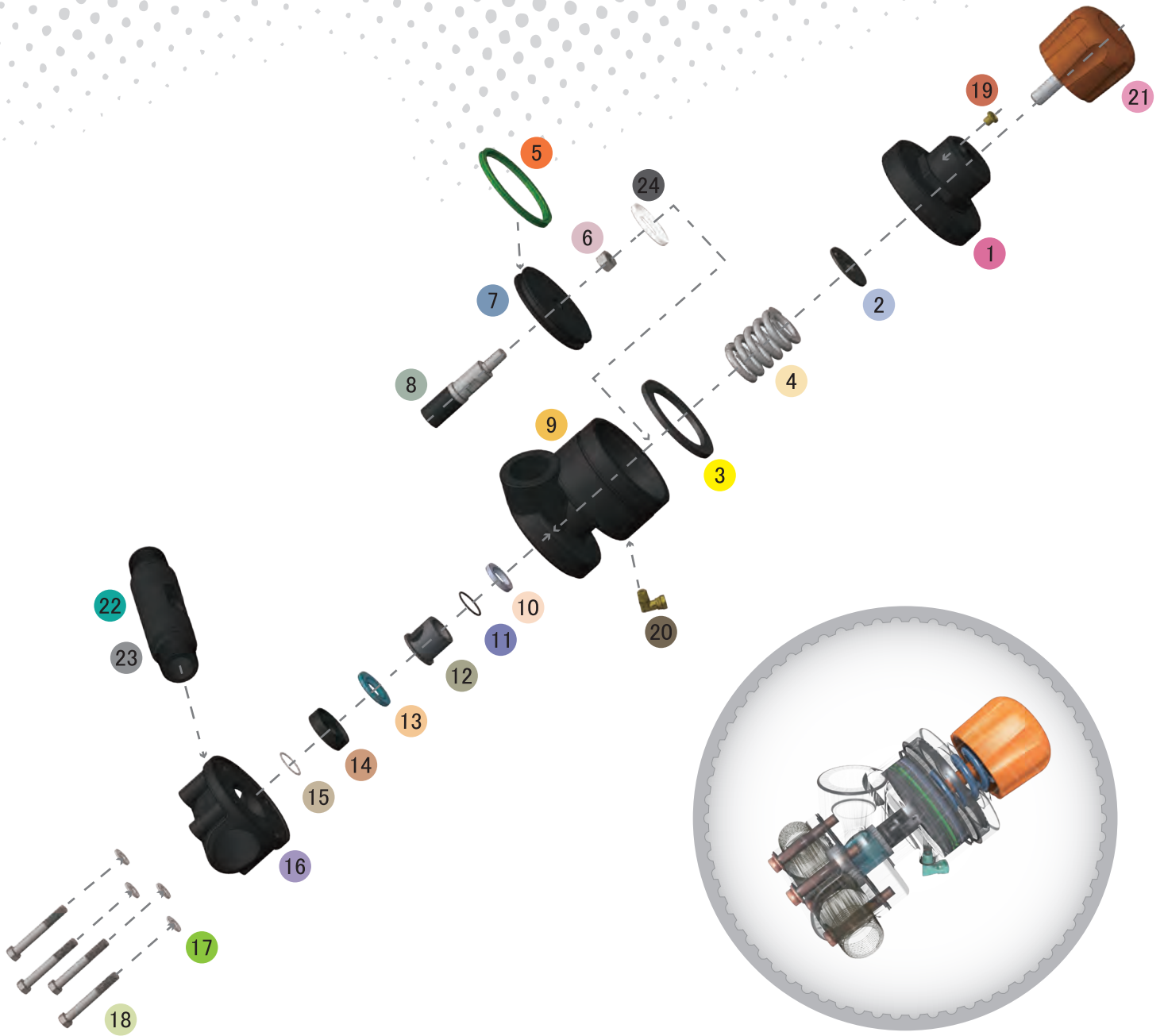
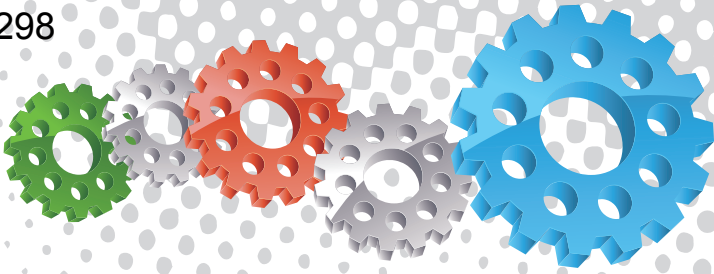
Stainless Steel Shot



Component Highlights



- | | | |
|-------------------------------------|-------------------------|---------------------------------|
| 1 32 mm (1-1/4") Abrasive Feed Port | 5 Anti Vibration Washer | 9 Pilot Air Connector |
| 2 Sleeved Tungsten Carbide Plunger | 6 Valve Spring | 10 Tungsten Sleeve |
| 3 Valve Top Cap | 7 Urethane Piston Seal | 11 Carburized Pipe Nipple 55HRC |
| 4 Reinforced Nylon Control Knob | 8 Valve Piston | 12 Hardened Seat Holder |



Assemblies

Stock Code	Description	Weight
BAC-VA-PB-0165	Corsa NPT 1-1/4" With Tungsten Sleeve	6.13 kg (13.49 lbs)
BAC-VA-PB-0163	Corsa NPT 1-1/2" With Tungsten Sleeve	6.08 kg (13.38 lbs)

Service Kits

Stock Code	Description	Include Items
BAC-VA-PB-0028	Corsa Tungsten Seat Kit	13 14 15
BAC-VA-PB-0029	Corsa Piston Kit	2 3 4 5 6 7
BAC-VA-PB-0167	Corsa NPT Tungsten Service Kit	5 8 10 11 12 13 14 15
BAC-VA-PB-0188	Corsa NPT Upper Seal Kit	5 10 11 13 15
BAC-VA-PB-0211	Corsa NPT Valve Base Kit	16 17 18



All data and information subject to change without prior notice. Brochure reference CAT-0702-02-01



Parts List



Description	Qty	Description	Qty	Description	Qty
1 Top Cap NPT	1	9 Cylinder NPT	1	17 Flat Washer	4
2 Anti Vibration Washer	1	10 Plunger Seal	1	18 Hex Head Bolt	4
3 Stop Ring	1	11 O-Ring	1	19 Exhaust Filter	1
4 Spring	1	12 Tungsten Carbide Sleeve	1	20 Elbow With Nut - NPT	1
5 Piston Seal	1	13 Urethane Seat	1	21 Control Knob (Orange)	1
6 1/2" UNC Nut	1	14 Seat Holder	1	22 Pipe Nipple 1-1/4"X 1-1/4"NPT (Applicable to valve BAC-VA-PB-0165)	1
7 Piston	1	15 O-ring	1	23 Pipe Nipple 1-1/2"X 1-1/2"NPT (Applicable to valve BAC-VA-PB-0163)	1
8 Tungsten Carbide Plunger - Standard	1	16 Base - NPT	1	24 Spring Seat	1