



Electric Remote Conversion Kits



Product Features

The PanBlast™ Electric Remote Conversion Kit includes all components and fittings necessary to convert pneumatic blast pot remote control systems to electrically actuated systems.

- ▶ PanBlast™ AirStop II Electric Remote Control Handle.
- ▶ Cable couplings.
- ▶ Control valve solenoids.
- ▶ 12V or 24V supply.
- ▶ Other voltages available on request.

Common Applications

- ▶ Long-blasting hose applications.
- ▶ Conversion of slow pneumatic remote control systems.

Complementary Products



Automatic Blast Pots



AirFlo Electric Handle



UniFlo Remote Valve



Kombi II Remote Valve



QuikStop IIS Electric Handle



AirStop Electric Handle

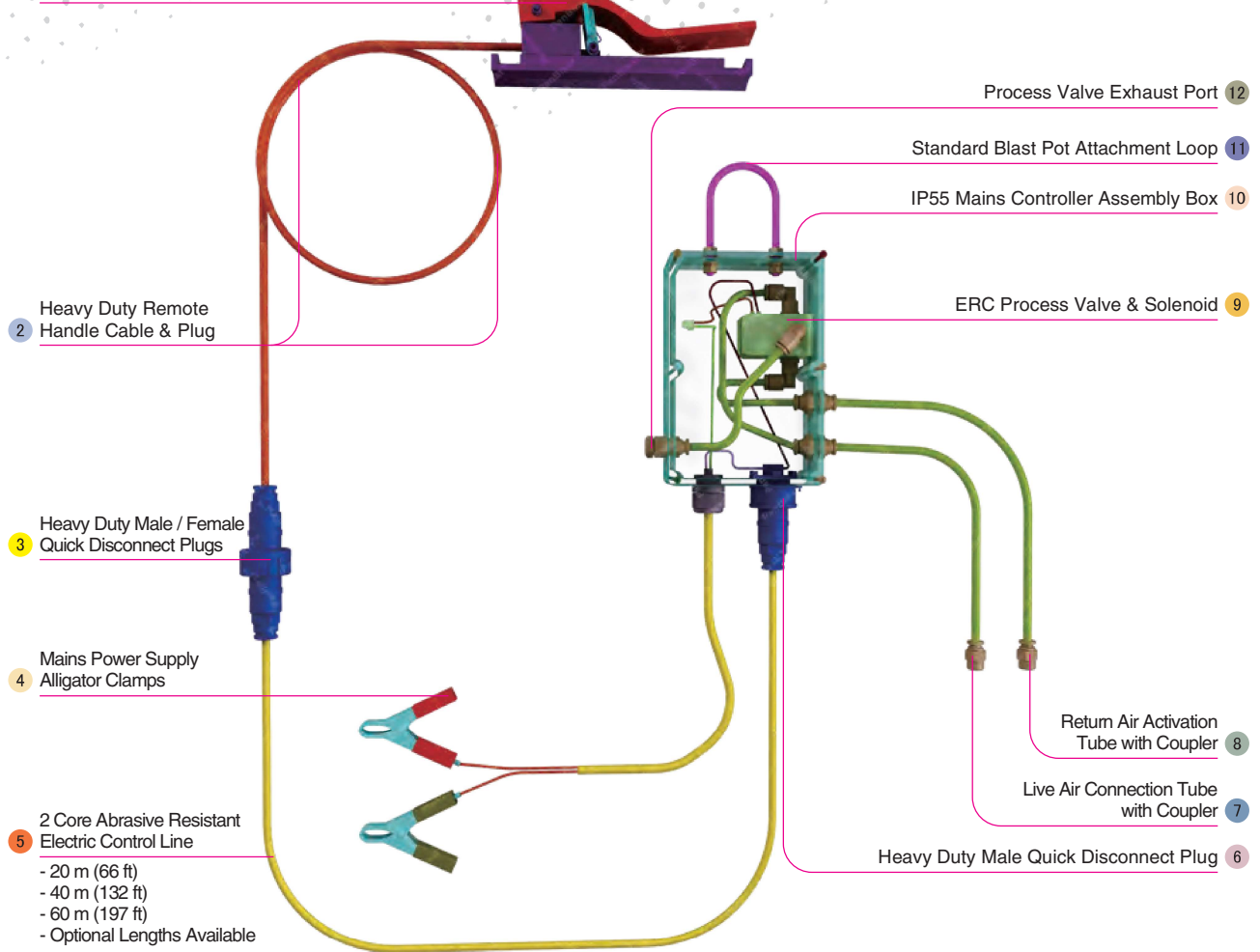


Corsa II Valve



Tandem Inlet Valve

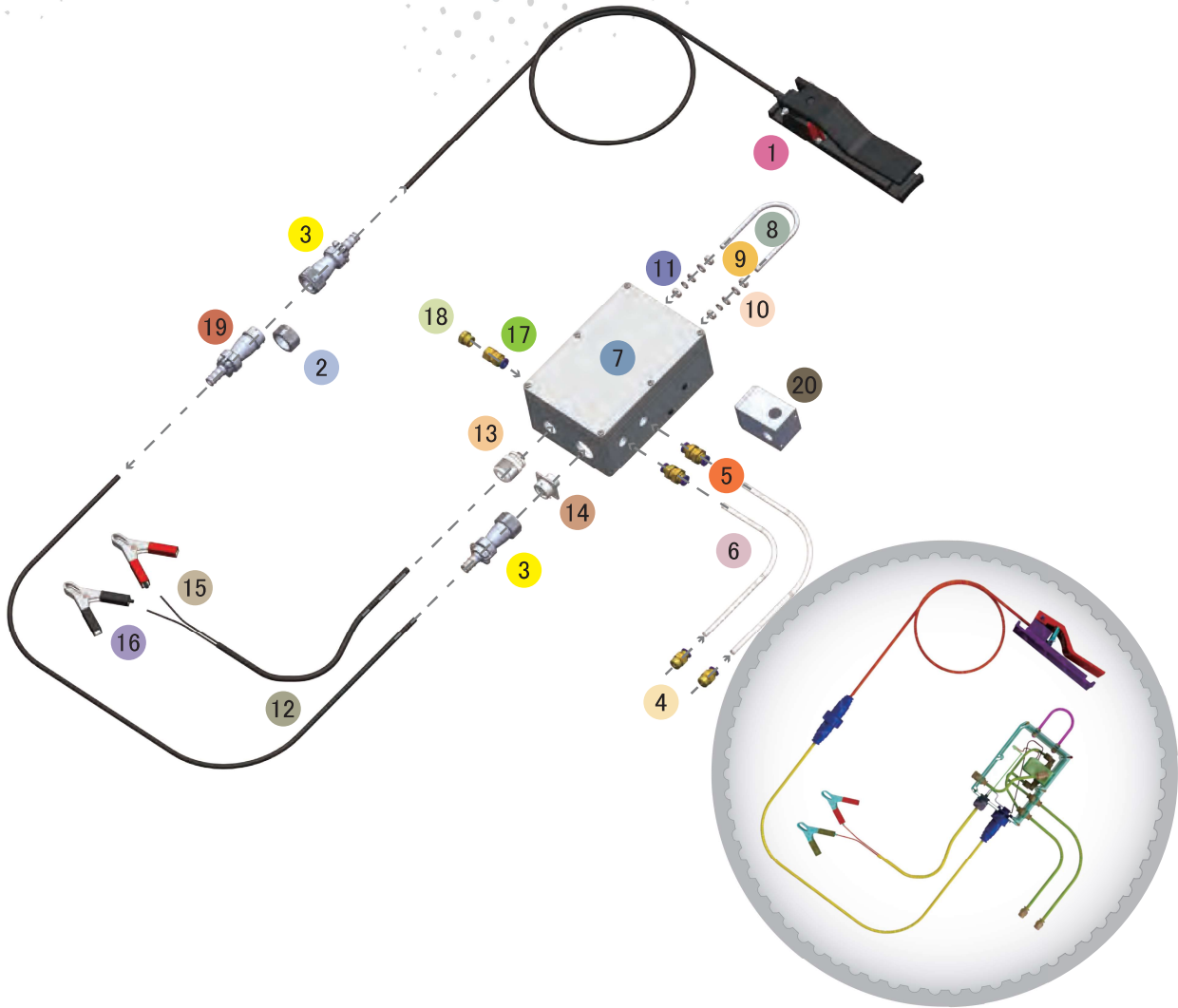
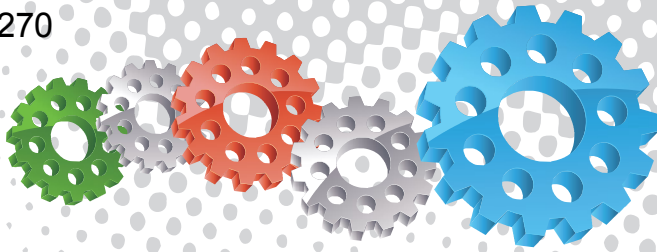
1 Heavy Duty AirStop II Electric Remote Control Handle



Component Highlights



- | | | |
|--------------------------------------------------------|---------------------------------------------------|---------------------------------------|
| 1 Heavy Duty AirStop II Electric Remote Control Handle | 5 2 Core Abrasive Resistant Electric Control Line | 9 ERC Process Valve & Solenoid |
| 2 Heavy Duty Remote Handle Cable & Plug | 6 Heavy Duty Male Quick Disconnect Plug | 10 IP55 Mains Controller Assembly Box |
| 3 Heavy Duty Male / Female Quick Disconnect Plugs | 7 Live Air Connection Tube with Coupler | 11 Standard Blast Pot Attachment Loop |
| 4 Mains Power Supply Alligator Clamps | 8 Return Air Activation Tube with Coupler | 12 Process Valve Exhaust Port |



Assemblies

Stock Code	Description	Weight
BAC-RC-0118-02	Electric Remote Conversion Kit-20 m	6.0 kg (13.2 lbs)
BAC-RC-0025-02	Electric Remote Conversion Kit-40 m	6.5 kg (14.3 lbs)
BAC-RC-0600-01	Electric Remote Conversion Kit-60 m	7.0 kg (15.4 lbs)

Service Kits

Stock Code	Description	Include Items
BAC-RC-0637-00	Control Handle Kit	1 3
BAC-RC-0639-00	Control Cable Kit 20 m	2 3 12 x20 m 19
BAC-RC-0638-00	Control Cable Kit 40 m	2 3 12 x40 m 19
BAC-RC-0640-00	Control Cable Kit 60 m	2 3 12 x60 m 19



All data and information subject to change without prior notice. Brochure reference CAT-0305-01-00



Parts List



Description	Qty	Description	Qty	Description	Qty
1 AirStop II Electric Control Handle	1	8 U-Bolt	1	15 Alligator Clip (Red)	1
2 Receptacle Cover	1	9 M6 Nut	4	16 Alligator Clip (Black)	1
3 Cable Quick Connector - Male	2	10 Flat Washer	4	17 1/4" F Tube Bulkhead Connector	1
4 1/4" Tube Connector	2	11 Spring Washer	2	18 1/4" Brass Filter	1
5 Tube Fitting	2	12 Two Core Cable	20/40/60 m	19 Cable Quick Connector - Female	1
6 Nylon Tubing	2.5 m	13 M20 Cable Gland	1	20 12VDC Solenoid Valve	1
7 Alum Box IP65-180x120x80mm	1	14 Receptacle Socket	1		