



PB1000HD Blast Cabinet



Product Features

The PanBlast™ PB1000HD Heavy Duty Suction Blast Cabinet is a highly efficient, general purpose, industrial blast cabinet, compatible with a wide range of abrasive media, including:

- * FastBlast™ Chilled Iron Grit
- * PanaGrit™ Cast Steel Grit
- * QuickCut™ Aluminium Oxide
- * BrightBlast™ Glass Beads
- * EnviroGrit™ Garnet

- ▶ Cyclone type abrasive separator cleans the abrasive during use.
- ▶ Safety door interlock.
- ▶ Integral dry cartridge reverse pulse dust collector for clear visibility.
- ▶ Heavy duty, wear resistant rubber gloves.
- ▶ Quick-change laminated glass viewing window - no tools required.
- ▶ Fully adjustable abrasive feed tee.
- ▶ Compressed air regulator and gauge.
- ▶ High performance PanBlast™ Delta Suction Gun.
- ▶ Air blow down gun standard.

Common Applications

- ▶ De-scale and de-rust metal.
- ▶ Remove paint and coatings.
- ▶ Remove burrs, flashings and sand from castings and moldings.
- ▶ Decorative finishing of non-ferrous metals.
- ▶ Stone and glass etching.
- ▶ Mold cleaning.

Complementary Products



Delta GDF Manual Blast Gun



Delta SNH Auto Blast Gun



Cabinet Gun Stand



Moisture Separator



Pow Air Vac



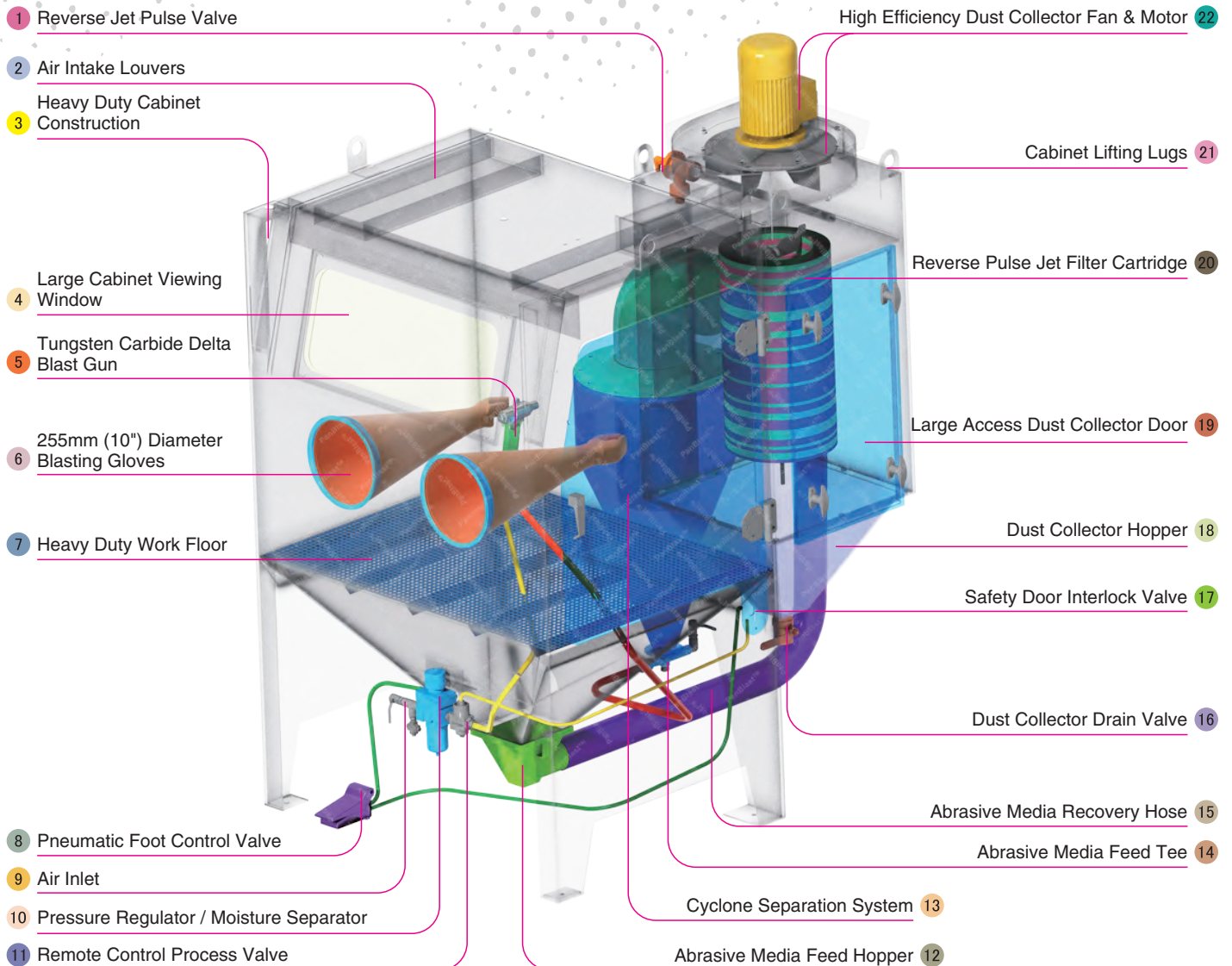
Dust Collector Silencer



Track & Turntable



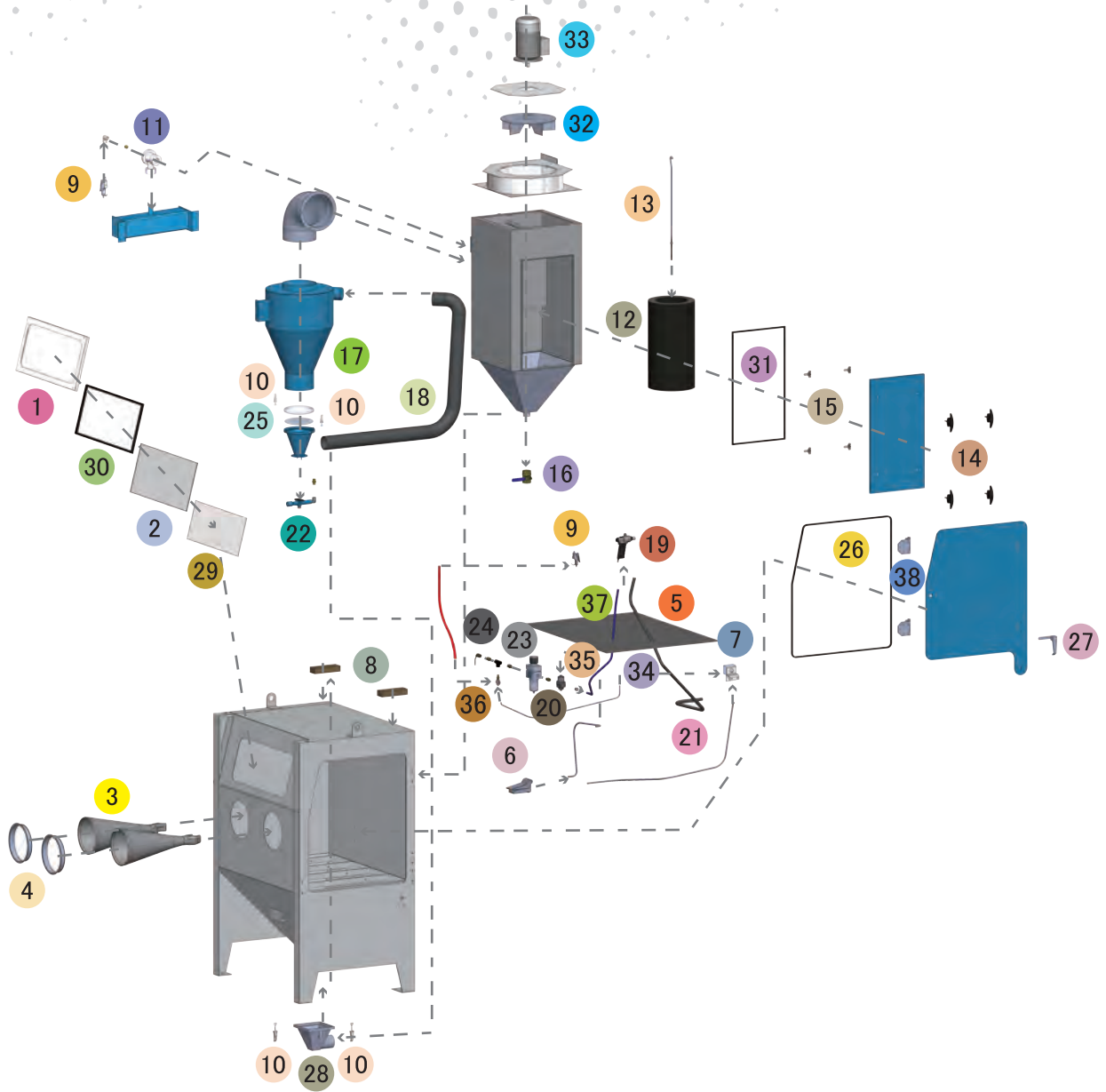
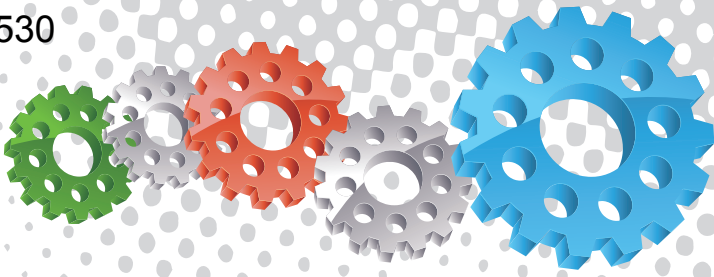
Tumble Basket



Component Highlights



- | | | |
|--|--|---|
| 1 Reverse Jet Pulse Valve | 9 Air Inlet | 17 Safety Door Interlock Valve |
| 2 Air Intake Louvers | 10 Pressure Regulator / Moisture Separator | 18 Dust Collector Hopper |
| 3 Heavy Duty Cabinet Construction | 11 Remote Control Process Valve | 19 Large Access Dust Collector Door |
| 4 Large Cabinet Viewing Window | 12 Abrasive Media Feed Hopper | 20 Reverse Pulse Jet Filter Cartridge |
| 5 Tungsten Carbide Delta Blast Gun | 13 Cyclone Separation System | 21 Cabinet Lifting Lugs |
| 6 255mm (10") Diameter Blasting Gloves | 14 Abrasive Media Feed Tee | 22 High Efficiency Dust Collector Fan & Motor |
| 7 Heavy Duty Work Floor | 15 Abrasive Media Recovery Hose | |
| 8 Pneumatic Foot Control Valve | 16 Dust Collector Drain Valve | |



Assembly

Stock Code	Description	Weight
BEC-CA-0002-02	PB1000HD Blast Cabinet Assembly	520 kg (1146 lbs)

Optional Accessories

Stock Code	Description	Stock Code	Description
BAC-CA-PB-0180	PB1000 Cabinet Track & Turntable	BAC-CA-PB-0040	Tumble Basket Assembly - 300 mm DIA
BAC-CA-PB-0244	PB1000/1500/2000 Turntable Kit	BAC-CA-PB-0455	Foot Valve Guard
BAC-CA-PB-0277	Cabinet Gun Stand	BAC-CA-PB-0292	Operator Sound Kit
BAC-CA-PB-0241	Silencer Kit	BAC-CA-PB-0278	PB1000 Linning Kit
BAC-CA-PB-0243	Tumble Basket Assembly - 350 mm DIA	BAC-DC-0002-01	230V 1- Cartridge Auto - Reverse Pulse Kit



All data and information subject to change without prior notice. Brochure reference CAT-0602-02-01

Parts List

Item	Stock Code	Description	Qty
1	YAC-CA-PB-0101	Window Frame	1
2	BAC-CA-PB-0137	Rectangular Window	1
3	BAC-GL-PB-0003	10" Ø Cabinet Rubber Gloves	1 pr
4	BAC-CA-PB-0157	Cabinet Entry Ring	2
5	BAC-CA-PB-0126	Cabinet Floor Mesh	1
6	BAC-CA-PB-0086	Foot Valve Spring Return	1
7	YAC-CA-PB-0219	Door Interlock Valve	1
8	BAC-CA-PB-0140	Air Entry Filter	2
9	YAC-CA-PB-0145	1/4" Blow Off Gun	2
10	YAC-FN-PB-0041	Toggle Catch	4
11	BAC-DC-PB-0007	Pulse Valve	1
12	BAC-DF-PB-0002	Filter Cartridge - Size 2 (Open/Close)	1
13	YAC-DC-PB-0005	700mm Hanger Rod	1
14	YAC-CA-PB-0146	Handle	4
15	YAC-CA-PB-0205	Handle Tongue	4
16	BAC-PF-PB-0008	38 mm (1-1/2") Ball Valve	1
17	BAC-CA-0281-04	Rubber Lined Cyclone	1
18	BAC-CA-PB-0322	Recovery Hose	1
19	BAC-BG-PB-0057	Delta-m Gun GDF 3/16 X 3/8 Assembly	1
20	BAC-RC-PB-0142	Sola5 Inlet Valve Sub Assembly	1
21	BAC-CA-0588-00	Abrasive Hose	1
22	BAC-CA-PB-0220	Feed Tee Assembly	1
23	BAC-AF-PB-0047	13 mm (1/2") Filter Regulator With Gauge	1
24	BAC-PF-PB-0001	13 mm (1/2") Ball Valve	1
25	BAC-CA-0353-00	Standard Cyclone Screen Seal	1
26	BAC-CA-PB-0178	Cabinet Door Seal	1
27	YAC-CA-PB-0138	Latch	1
28	YAC-CA-PB-0226	Spigot	1
29	BAC-CA-PB-0392	720 X 270 Window Cover - 5 pcs	1
30	BAC-CA-PB-0141	Cabinet Window Seal	1
31	BAC-CA-PB-0406	Dust Collector Door Seal	1
32	YAC-CA-PB-0183	Fan Impellor – 360cfm Aluminium	1
33	YAC-CA-PB-0144	1.5 kw 415 v/50 hz Motor	1
34	BAC-CA-PB-0135	Rubber Sealing Grommet	1
35	YAC-CA-PB-0423	16 mm Grommet	1
36	YAC-CA-0477-00	Grommet	1
37	BAC-AF-PB-0164	Air Hose 10 mm 250 psi Impact Blue	2 m
38	BAC-CA-PB-0296	Hinge Assembly	2

Technical Data



- Optional Turntable Load:**
250 kg (551 lbs)
- Internal Size:**
1100 mm (43") Wide 920 mm (36") Deep
890 mm (35") High
- Door Size:**
755 mm (30") Wide 855 mm (34") High
- Air Consumption:**
85 m³/hr (50 cfm) @550kPa (80 psi)
- Suction Gun / Nozzle Size:**
BAC-BG-PB-0057 Delta Manual Gun 3/16" x 3/8"
- Cabinet Light:**
2 x 18Watt 230V 50Hz
- Cabinet Overall Dimension:**
1300 mm (52") Wide 1625 mm (64") Deep
2220 mm (88") High
- Recommended Floor Area:**
2900 mm (114") Wide 2400 mm (95") Deep
- Window Size:**
750 mm (30") Wide 300 mm (12") High
- Air Supply Line:**
13 mm (1/2")
- Electrical Power:**
1.5Kw (2 hp) 415VAC 50Hz 2 Pole 3 Phase

