



PB1500P Blast Cabinets



Product Features

The PanBlast™ PB1500P Blast Cabinet is a highly efficient, general purpose, industrial blast cabinet, and is compatible with a wide range of abrasive media, including:

- * FastBlast™ Chilled Iron Grit
- * QuickCut™ Aluminium Oxide
- * EnviroGrit™ Garnet
- * PanaGrit™ Cast Steel Grit
- * BrightBlast™ Glass Beads
- * PanaShot™ Steel Shot

- ▶ Up to three times faster than suction blast systems.
- ▶ PanBlast™ 31 litres (1.1 ft³) blast pot.
- ▶ Cyclone type abrasive separator cleans abrasive during use.
- ▶ Safety door interlock.
- ▶ Integral dry cartridge reverse pulse dust collector for clear visibility.
- ▶ Heavy duty wear resistant rubber gloves.
- ▶ Quick-change laminated glass viewing window - no tools required.
- ▶ Fina II abrasive metering valve.
- ▶ Compressed air regulator and gauge.
- ▶ Standard air blow down gun.

Common Applications

- ▶ De-scale and de-rust metal.
- ▶ Remove paint and coatings.
- ▶ Remove burrs, flashings and sand from castings and moldings.
- ▶ Decorative finishing of non-ferrous metals.
- ▶ Stone and glass etching.
- ▶ Mold cleaning.

Complementary Products



ATN-S Blast Nozzles



ABN-S Blast Nozzles



ATN-M Blast Nozzles



AER85 Vacuum Blaster



Pow Air Vac



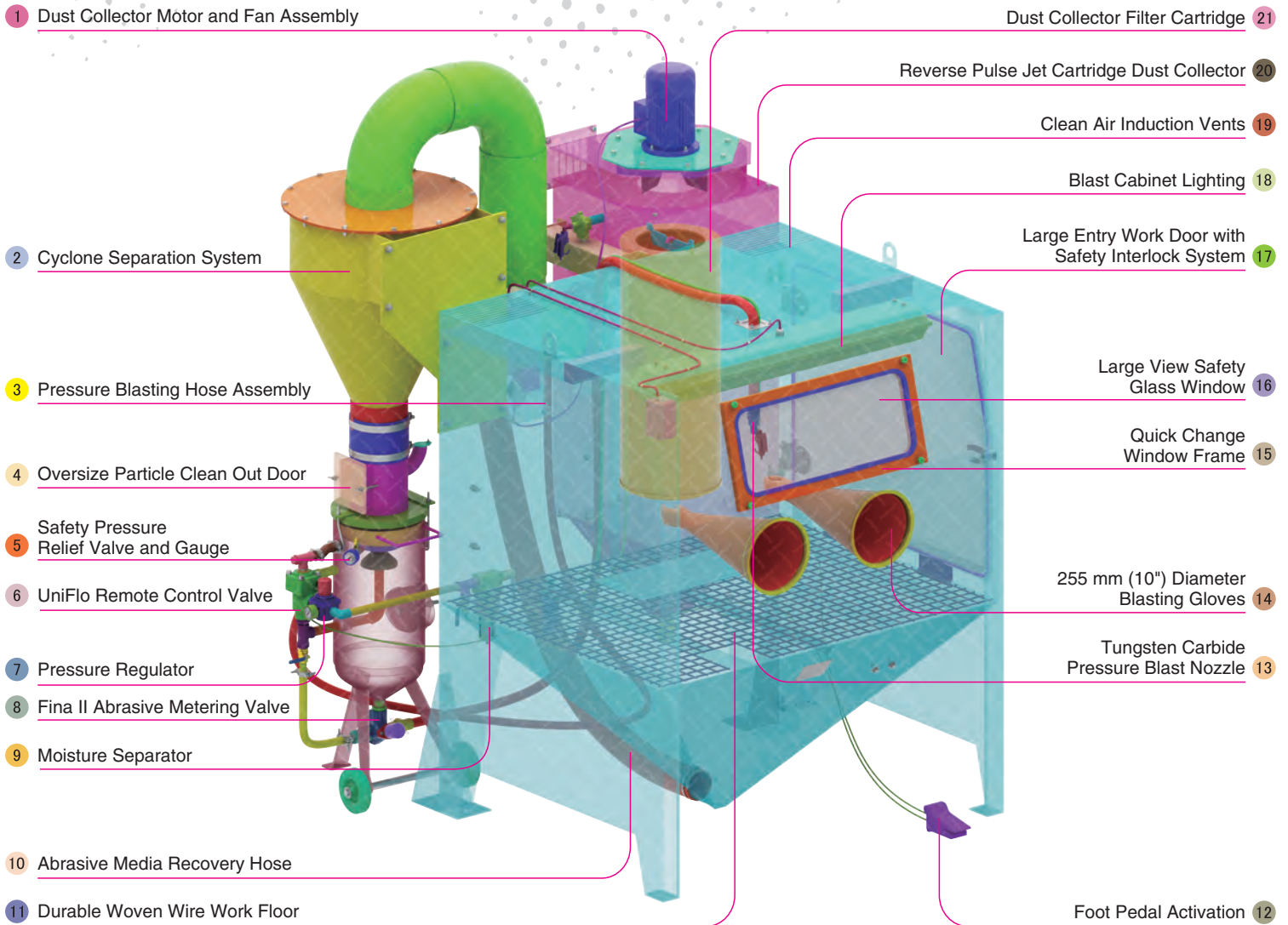
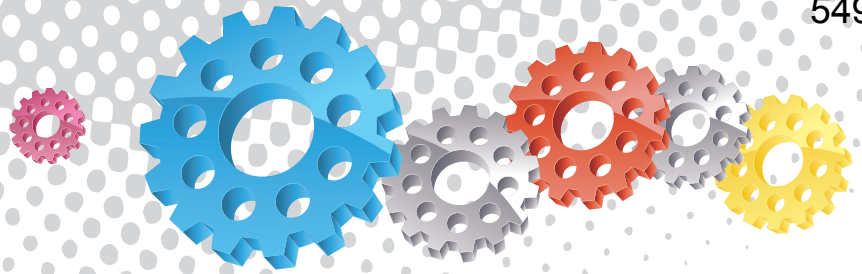
Filter Cartridge



Moisture Separator



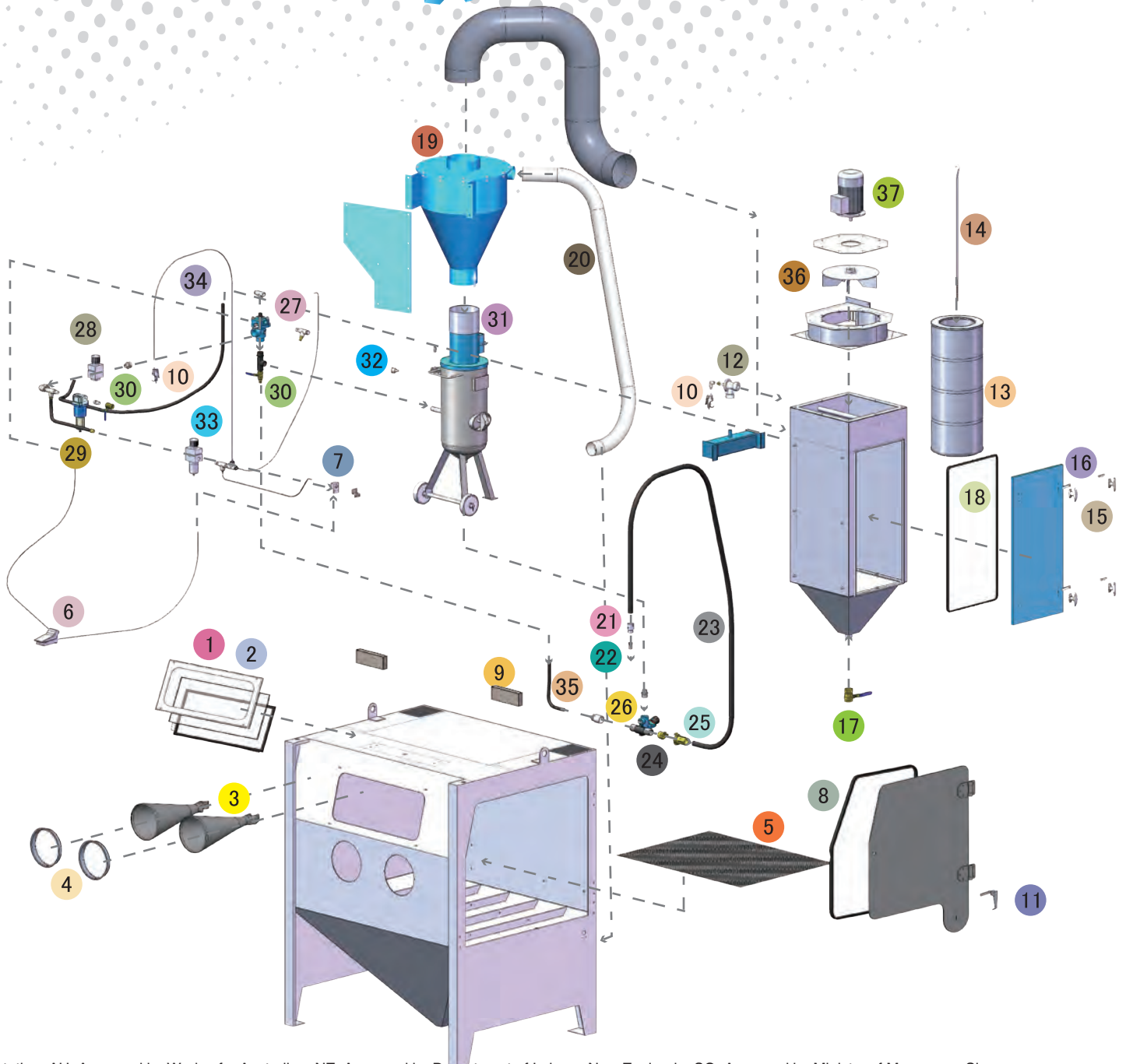
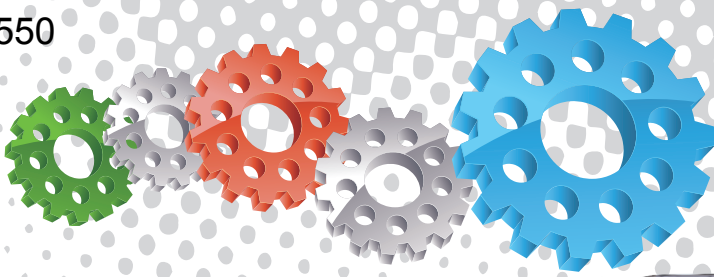
Cabinet Window Cover



Component Highlights



- | | | |
|------------------------------------------|-------------------------------------------|-------------------------------------------------------|
| 1 Dust Collector Motor and Fan Assembly | 8 Fina II Abrasive Metering Valve | 15 Quick Change Window Frame |
| 2 Cyclone Separation System | 9 Moisture Separator | 16 Large View Safety Glass Window |
| 3 Pressure Blasting Hose Assembly | 10 Abrasive Media Recovery Hose | 17 Large Entry Work Door with Safety Interlock System |
| 4 Oversize Particle Clean Out Door | 11 Durable Woven Wire Work Floor | 18 Blast Cabinet Lighting |
| 5 Safety Pressure Relief Valve and Gauge | 12 Foot Pedal Activation | 19 Clean Air Induction Vents |
| 6 UniFlo Remote Control Valve | 13 Tungsten Carbide Pressure Blast Nozzle | 20 Reverse Pulse Jet Cartridge Dust Collector |
| 7 Pressure Regulator | 14 255 mm (10") Diameter Blasting Gloves | 21 Dust Collector Filter Cartridge |



Notation: AU: Approved by Worksafe, Australia. NZ: Approved by Department of Labour, New Zealand. SG: Approved by Ministry of Manpower, Singapore.

Assemblies

Stock Code	Description	Weight
BEC-CA-0557-00	PB1500P/AU/NZ Pressure Cabinet Assembly	800 kg (1764 lbs)
BEC-CA-0556-00	PB1500P/SG Pressure Cabinet Assembly	800 kg (1764 lbs)

Optional Accessories

Stock Code	Description	Stock Code	Description
BAC-CA-PB-0212	PB1500 Track & Turntable	BAC-CA-PB-0455	Foot Valve Guard
BAC-CA-PB-0243	Tumble Basket Assembly - 350 mm Dia	BAC-CA-PB-0292	Operator Sound Kit
BAC-CA-PB-0040	Tumble Basket Assembly - 300 mm Dia	BAC-CA-PB-0241	Silencer Kit
BAC-CA-PB-0244	PB1000/1500/2000 Turntable Kit	BAC-CA-PB-0279	PB1500 Linning Kit
BAC-CA-PB-0277	Cabinet Gun Stand	BAC-DC-0002-01	230V 1-Cartridge Auto-Reverse Pulse Kit



All data and information subject to change without prior notice. Brochure reference CAT-0603-03-01

Parts List

Item	Stock Code	Description	Qty
1	BAC-CA-PB-0137	Rectangular Window	1
2	BAC-CA-PB-0141	Cabinet Window Seal	2
3	BAC-GL-PB-0003	10" Ø Cabinet Rubber Gloves	1 pr
4	BAC-CA-PB-0157	Cabinet Entry Ring	2
5	BAC-CA-0623-00	Cabinet Floor Mesh	1
6	BAC-CA-PB-0086	Foot Valve Spring Return	1
7	YAC-CA-PB-0219	Door Interlock Valve	1
8	BAC-CA-PB-0319	Cabinet Door Seal	1
9	BAC-CA-PB-0140	Air Entry Filter	4
10	YAC-CA-PB-0145	1/4" Blow Off Gun	1
11	YAC-CA-PB-0138	Latch	1
12	BAC-DC-PB-0007	Pulse Valve	1
13	BAC-DF-PB-0005	Filter Cartridge - Size 3 (Open/Close)	1
14	YAC-DC-PB-0033	920 mm Hanger Rod	1
15	YAC-CA-PB-0146	Handle	4
16	YAC-CA-PB-0205	Handle Tongue	4
17	BAC-PF-PB-0008	38 mm (1-1/2") Ball Valve	1
18	BAC-CA-PB-0436	Dust Collector Jumbo Door Seal	1
19	BAC-CA-PB-0282	PB1500HD Rubber Lined Cyclone	1
20	BAC-CA-0600-00	Recovery Hose	1
21	BAC-NZ-PB-0025	ANH 1/2 Aluminium Nozzle Holder	1
22	BAC-NZ-PB-0054	Blast Nozzle ATN-3S Alum/Tungsten Short	1
23	BAC-CA-0593-00	Blast Hose	1
24	BAC-HC-0086-00	STC-1/2 Steel Threaded Pot Coupling	1
25	BAC-HC-0090-00	SHC-1/2 Steel Hose Coupling	1
26	BAC-VA-0397-00	Fina II Valve 1/2"M X 3/4"F	1
27	BAC-RC-PB-0014	UniFlo Valve Assembly With Fittings	1
28	BAC-AF-PB-0153	19 mm (3/4") Pressure Regulator With Gauge	1
29	BAC-AF-PB-0057	19 mm (3/4") Port Moisture Separator	1
30	BAC-PF-PB-0004	19 mm (3/4") Ball Valve	2
31	BAC-PF-PB-0030	6 mm (1/4")-125 PSI Pressure Relief Valve	1
32	BAC-PF-PB-0031	6 mm (1/4") Pressure Gauge - Rear Entry	1
33	BAC-AF-PB-0048	9.5 mm 3/8" Filter Regulator With Gauge	1
34	YAC-PF-PB-0125	1/4" NB Air Hose	5 m
35	YAC-BF-PB-0041	Hose-Air/Water Delivery 19 mmID x 29 mmOD	1 m
36	YAC-CA-PB-0183	Fan Impellor - 360 CFM Aluminium	1
37	YAC-CA-PB-0144	1.5 Kw 415 V/50 Hz Motor	1

Technical Data



- Optional Turntable Load:**
250 kg (551 lbs)
- Internal Size:**
1400 mm (55") Wide 1180 mm (47") Deep
1040 mm (41") High
- Door Size:**
1055 mm (42") Wide 855 mm (34") High
- Air Consumption:**
85 m³/hr (50cfm) @550 kPa (80 psi)
- Blast Nozzle Size:**
BAC-NZ-PB-0054
Nozzle ATN-3S Orifice 3/16" - 4.8 mm
- Cabinet Light:**
2 x 36Watt 230V 50Hz
- Cabinet Overall Dimension:**
1914 mm (76") Wide 1912 mm (76") Deep
2638 mm (104") High
- Recommended Floor Area:**
3700 mm (146") Wide 2700 mm (106") Deep
- Window Size:**
750 mm (30") Wide 300 mm (12") High
- Air Supply Line:**
19 mm (3/4")
- Electrical Power:**
1.5Kw (2hp) 415VAC 50Hz 2 Pole 3 Phase

