



PB2000P Blast Cabinet



Product Features

The PanBlast™ PB2000P Blast Cabinet is a highly efficient, general purpose, industrial blast cabinet, compatible with a wide range of abrasive media, including:

- * FastBlast™ Chilled Iron Grit
- * QuickCut™ Aluminium Oxide
- * EnviroGrit™ Garnet
- * PanaGrit™ Cast Steel Grit
- * BrightBlast™ Glass Beads
- * PanaShot™ Steel Shot

- ▶ Up to three times faster than suction blast systems.
- ▶ PanBlast™ 31 liters (1.1ft³) blast pot.
- ▶ Cyclone type abrasive separator cleans abrasive during use.
- ▶ Safety door interlock.
- ▶ Integral dry twin cartridge reverse pulse dust collector for clear visibility.
- ▶ Dual heavy duty wear resistant rubber gloves.
- ▶ Quick-change dual laminated glass viewing windows - no tools required.
- ▶ Fina II abrasive metering valve.
- ▶ Compressed air regulator and gauge.
- ▶ Standard air blow down gun.

Common Applications

- ▶ De-scale and de-rust metal.
- ▶ Remove paint and coatings.
- ▶ Remove burrs, flashings and sand from castings and moldings.
- ▶ Decorative finishing of non-ferrous metals.
- ▶ Stone and glass etching.
- ▶ Mold cleaning.

Complementary Products



ATN-S Blast Nozzles



ATN-M Blast Nozzles



Pow Air Vac



Moisture Separator



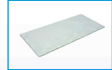
ABN-S Blast Nozzles



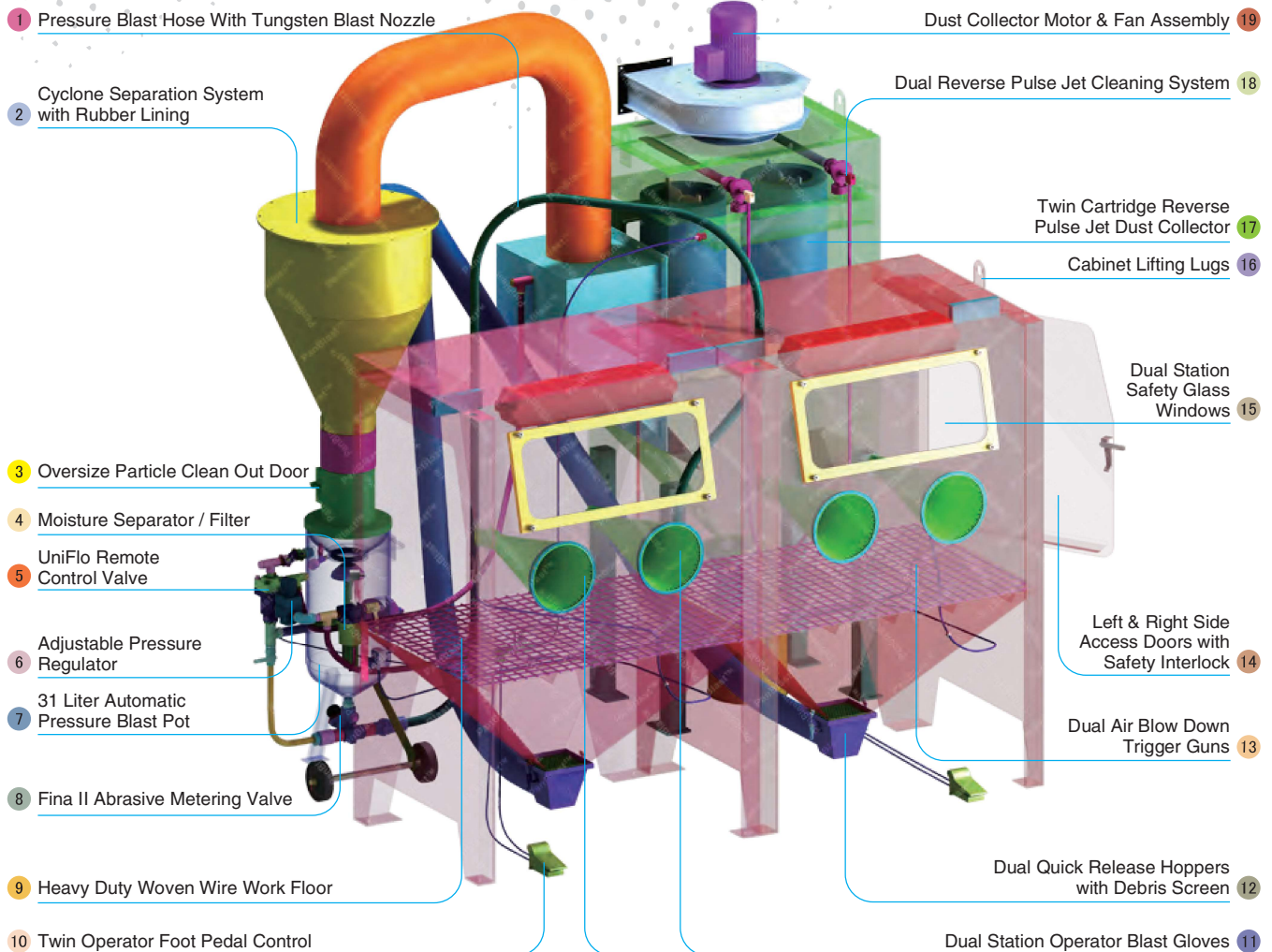
AER85 Vacuum Blaster



Filter Cartridge



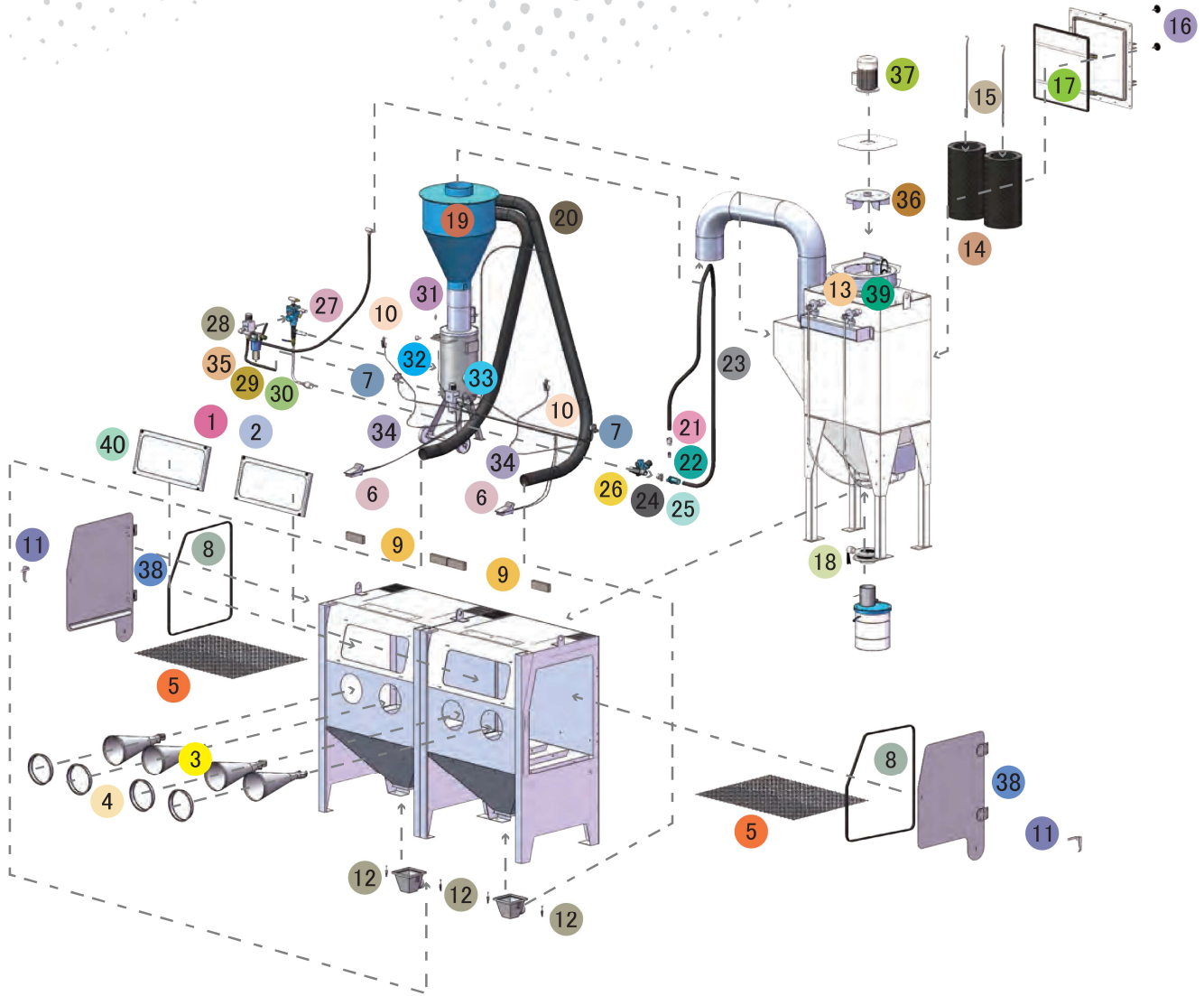
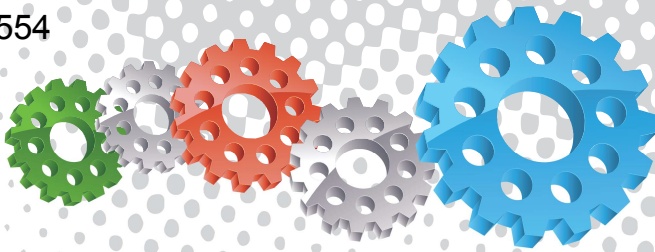
Cabinet Window Cover



Component Highlights



- | | | |
|--|---|--|
| 1 Pressure Blast Hose With Tungsten Blast Nozzle | 8 Fina II Abrasive Metering Valve | 15 Dual Station Safety Glass Windows |
| 2 Cyclone Separation System with Rubber Lining | 9 Heavy Duty Woven Wire Work Floor | 16 Cabinet Lifting Lugs |
| 3 Oversize Particle Clean Out Door | 10 Twin Operator Foot Pedal Control | 17 Twin Cartridge Reverse Pulse Jet Dust Collector |
| 4 Moisture Separator / Filter | 11 Dual Station Operator Blast Gloves | 18 Dual Reverse Pulse Jet Cleaning System |
| 5 UniFlo Remote Control Valve | 12 Dual Quick Release Hoppers with Debris Screen | 19 Dust Collector Motor & Fan Assembly |
| 6 Adjustable Pressure Regulator | 13 Dual Air Blow Down Trigger Guns | |
| 7 31 Liter Automatic Pressure Blast Pot | 14 Left & Right Side Access Doors with Safety Interlock | |



Assembly

| Stock Code | Description | Weight |
|----------------|--------------------------------|--------------------|
| BEC-CA-PB-0013 | PB2000P Blast Cabinet Assembly | 1170 kg (2579 lbs) |

Optional Accessories

| Stock Code | Description | Stock Code | Description |
|----------------|-------------------------------------|----------------|-------------------------------------|
| BAC-CA-PB-0244 | PB1000/1500/2000 Turntable Kit | BAC-CA-PB-0280 | PB2000 Linnig Kit |
| BAC-CA-PB-0277 | Cabinet Gun Stand | BAC-CA-PB-0292 | Operator Sound Kit |
| BAC-CA-PB-0241 | Silencer Kit | BAC-CA-PB-0247 | PB2000/P Track & Turntable Kit LH |
| BAC-CA-PB-0455 | Foot Valve Guard | BAC-CA-PB-0180 | PB1000 Cabinet Track & Turntable |
| BAC-CA-PB-0040 | Tumble Basket Assembly - 300 mm Dia | BAC-CA-PB-0243 | Tumble Basket Assembly - 350 mm Dia |



All data and information subject to change without prior notice. Brochure reference CAT-0603-04-00

Parts List

| Item | Stock Code | Description | Qty |
|------|----------------|--|------|
| 1 | YAC-CA-PB-0101 | Window Frame | 2 |
| 2 | BAC-CA-PB-0137 | Rectangular Window | 2 |
| 3 | BAC-GL-PB-0003 | 10" Ø Cabinet Rubber Gloves | 2 pr |
| 4 | BAC-CA-PB-0157 | Cabinet Entry Ring | 4 |
| 5 | BAC-CA-PB-0126 | Cabinet Floor Mesh | 2 |
| 6 | BAC-CA-PB-0086 | Foot Valve Spring Return | 2 |
| 7 | YAC-CA-PB-0219 | Door Interlock Valve | 2 |
| 8 | BAC-CA-PB-0178 | Cabinet Door Seal | 2 |
| 9 | BAC-CA-PB-0140 | Air Entry Filter | 4 |
| 10 | YAC-CA-PB-0145 | 1/4" Blow Off Gun | 2 |
| 11 | YAC-CA-PB-0138 | Latch | 2 |
| 12 | YAC-FN-PB-0041 | Toggle Catch | 4 |
| 13 | YAC-DC-0053-00 | Pulse Valve | 2 |
| 14 | BAC-DF-PB-0002 | Filter Cartridge - Size 2 | 2 |
| 15 | YAC-DC-PB-0005 | 700 mm Hanger Rod | 2 |
| 16 | YAC-FN-0383-00 | Female Star Knob | 2 |
| 17 | BAC-DC-0038-00 | Dust Collector Access Door Seal | 1 |
| 18 | BAC-PF-0407-00 | Butterfly Valve - 5" | 1 |
| 19 | BAC-CA-PB-0283 | PB2000HD Rubber Lined Cyclone | 1 |
| 20 | BAC-CA-0609-00 | Recovery Hose | 2 |
| 21 | YAC-NZ-PB-0081 | ANH 1/2 Aluminium Nozzle Holder Detail | 1 |
| 22 | BAC-NZ-PB-0054 | Blast Nozzle ATN-3S Alum/Tungsten Short | 1 |
| 23 | BAC-CA-0594-00 | Blast Hose | 1 |
| 24 | BAC-HC-PB-0057 | NTC-1/2 Nylon Threaded Pot Coupling | 1 |
| 25 | BAC-HC-PB-0054 | NHC-1/2 Nylon Hose Coupling | 1 |
| 26 | BAC-VA-0397-00 | Fina II Valve 1/2" M X 3/4" F | 1 |
| 27 | BAC-RC-PB-0014 | UniFlo Valve Assembly With Fittings | 1 |
| 28 | BAC-AF-PB-0153 | 19 mm (3/4") Pressure Regulator With Gauge | 1 |
| 29 | BAC-AF-PB-0057 | 19 mm (3/4") Port Moisture Separator | 1 |
| 30 | BAC-PF-PB-0004 | 19 mm (3/4") Ball Valve | 2 |
| 31 | BAC-PF-PB-0030 | 6 mm (1/4")-125 PSI Pressure Relief Valve | 1 |
| 32 | BAC-PF-PB-0031 | 6 mm (1/4") Pressure Gauge - Rear Entry | 1 |
| 33 | BAC-AF-PB-0048 | 9.5 mm 3/8" Filter Regulator With Gauge | 1 |
| 34 | YAC-PF-PB-0125 | 1/4" NB Air Hose | 2 m |
| 35 | YAC-BF-PB-0041 | Hose-Air/Water Delivery 19 mmID x 29 mmOD | 3 m |
| 36 | YAC-CA-PB-0183 | Fan Impellor - 360CFM Aluminium | 1 |
| 37 | YAC-CA-PB-0142 | 230VAC 1PH 50HZ Motor | 1 |
| 38 | BAC-CA-PB-0296 | Hinge Assembly | 4 |
| 39 | BAC-DC-0061-00 | Pulse Timer 2-10 Stations | 1 |
| 40 | BAC-CA-PB-0141 | Cabinet Window Seal | 4 |

Technical Data



- Optional Turntable Load:**
250 kg (551 lbs)
- Internal Size:**
2000 mm (79") Wide 920 mm (36") Deep
890 mm (35") High
- Door Size:**
755 mm (30") Wide 855 mm (34") High
- Air Consumption:**
68 m³/hr (40cfm) @ 550kPa (80 psi)
- Blast Nozzle Size:**
BAC-NZ-PB-0054
Nozzle ATN-3S Orifice 3/16" - 4.8mm
- Cabinet Light:**
4 x 18Watt 230V 50Hz
- Cabinet Overall Dimension:**
2496 mm (99") Wide 1809 mm (72") Deep
2681 mm (106") High
- Recommended Floor Area:**
5600 mm (221") Wide 3000 mm (118") Deep
- Window Size:**
2 x 750 mm (30") Wide 300 mm (12") High
- Air Supply Line:**
19 mm (3/4")
- Electrical Power:**
4Kw (5hp) 415VAC 50Hz 2 Pole 3 Phase

