



PB500HD Blast Cabinet



Product Features

The PanBlast™ PB500HD Suction Blast Cabinet is the smallest of our Heavy Duty line, providing efficiency in a general purpose, industrial use blast cabinet. It is compatible with a wide range of media, including:

- *FastBlast™ Chilled Iron Grit
- *PanaGrit™ Cast Steel Grit
- *QuickCut™ Aluminium Oxide
- *BrightBlast™ Glass Beads
- *EnviroGrit™ Garnet

- ▶ Cyclone type abrasive separator cleans the abrasive during use.
- ▶ Safety door interlock.
- ▶ Integral dry cartridge reverse pulse dust collector for clear visibility.
- ▶ Heavy duty, wear resistant rubber gloves.
- ▶ Quick-change laminated glass viewing window - no tools required.
- ▶ Fully adjustable abrasive feed tee.
- ▶ Compressed air regulator and gauge.
- ▶ High performance PanBlast™ Delta Suction Gun.
- ▶ Standard air blow down gun.

Common Applications

- ▶ De-scale and de-rust metal.
- ▶ Remove paint and coatings.
- ▶ Remove burrs, flashings and sand from castings and moldings.
- ▶ Decorative finishing of non-ferrous metals.
- ▶ Stone and glass etching.
- ▶ Mold cleaning.

Complementary Products



Delta SNH Manual Blast Gun



Delta SNH Auto Blast Gun



Filter Cartridge



Delta GDF Auto Blast Gun



Dust Collector Silencer



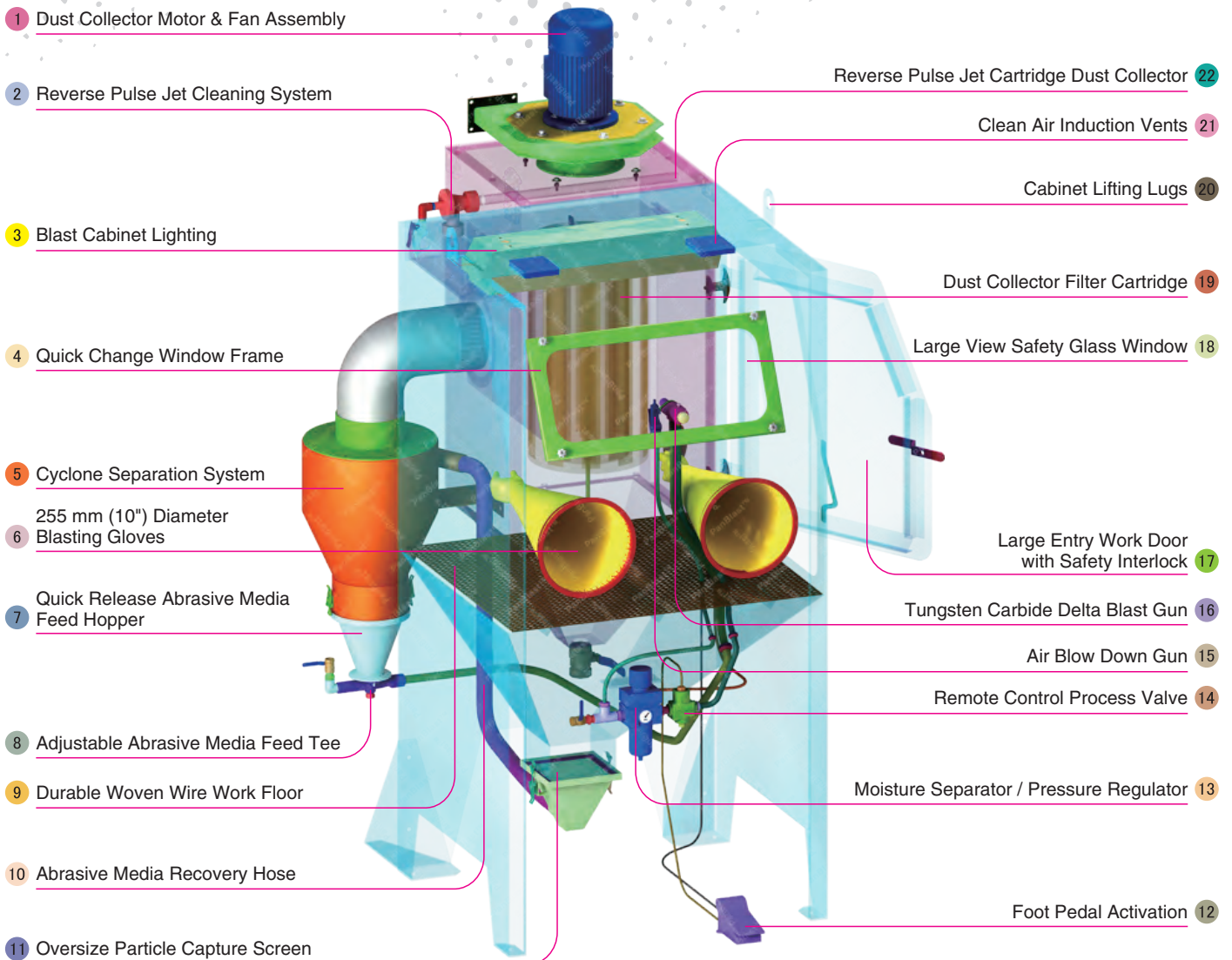
Cabinet Window Cover



Cabinet Gun Stand



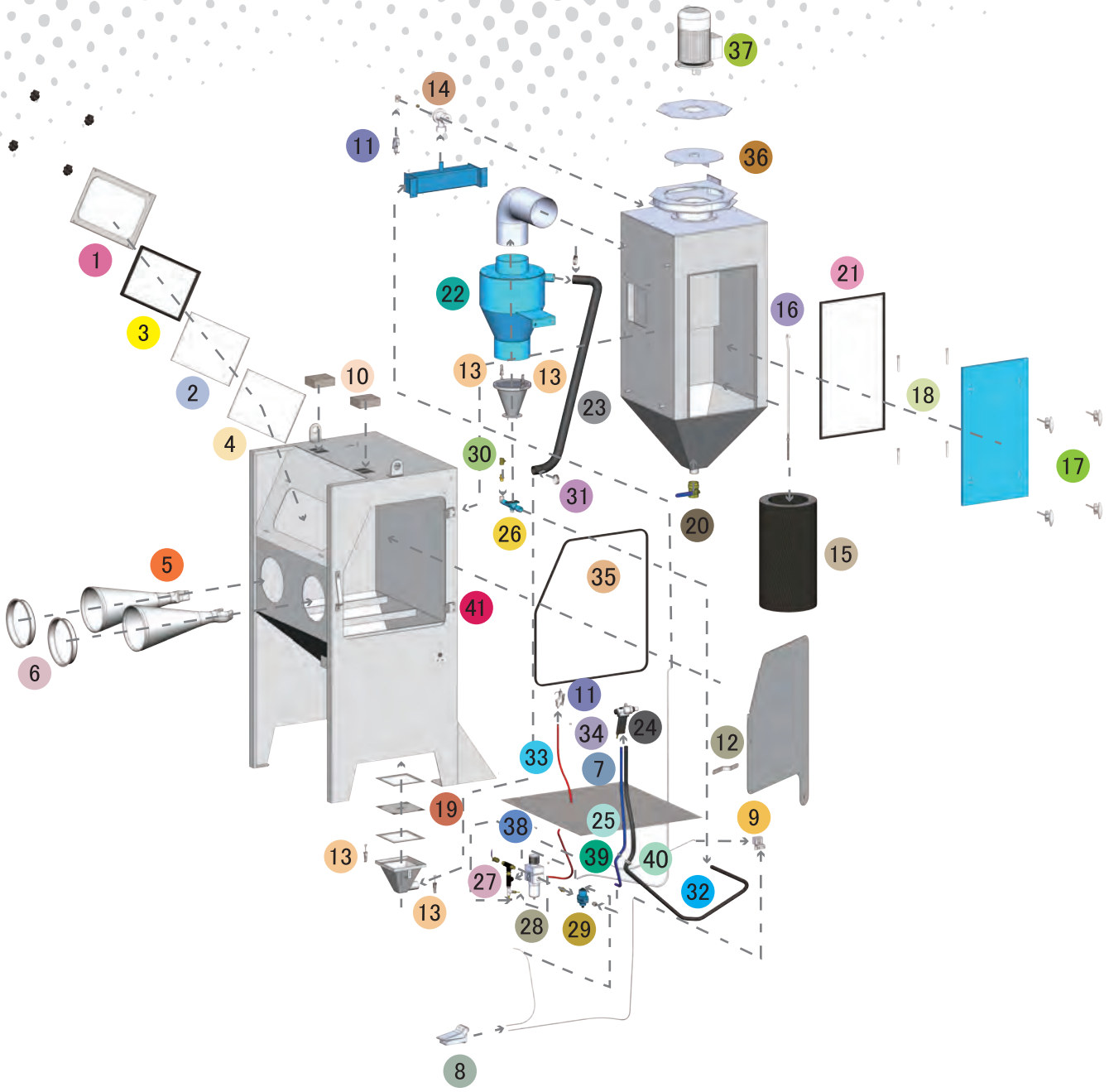
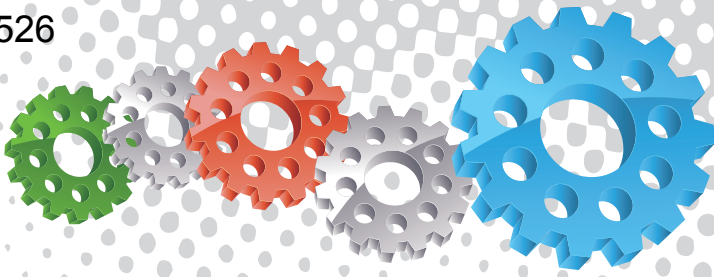
Moisture Separator



Component Highlights



- | | | |
|--|--|--|
| 1 Dust Collector Motor & Fan Assembly | 9 Durable Woven Wire Work Floor | 17 Large Entry Work Door with Safety Interlock |
| 2 Reverse Pulse Jet Cleaning System | 10 Abrasive Media Recovery Hose | 18 Large View Safety Glass Window |
| 3 Blast Cabinet Lighting | 11 Oversize Particle Capture Screen | 19 Dust Collector Filter Cartridge |
| 4 Quick Change Window Frame | 12 Foot Pedal Activation | 20 Cabinet Lifting Lugs |
| 5 Cyclone Separation System | 13 Moisture Separator / Pressure Regulator | 21 Clean Air Induction Vents |
| 6 255 mm (10") Diameter Blasting Gloves | 14 Remote Control Process Valve | 22 Reverse Pulse Jet Cartridge Dust Collector |
| 7 Quick Release Abrasive Media Feed Hopper | 15 Air Blow Down Gun | |
| 8 Adjustable Abrasive Media Feed Tee | 16 Tungsten Carbide Delta Blast Gun | |



Assembly

Stock Code	Description	Weight
BEC-CA-PB-0004	PB500HD Blast Cabinet Assembly	350 kg (772 lbs)

Optional Accessories

Stock Code	Description	Stock Code	Description
BAC-CA-PB-0427	Fixed Turntable	BAC-CA-PB-0428	Rubber Lined Cabinet
BAC-CA-PB-0277	Cabinet Gun Stand	BAC-CA-PB-0455	Foot Valve Guard
BAC-CA-PB-0335	Dust Collector Silence Kit	BAC-DC-0002-01	Single Cartridge Auto-Reverse Pulse Kit



All data and information subject to change without prior notice. Brochure reference CAT-0602-01-00

Parts List

Item	Stock Code	Description	Qty
1	YAC-CA-PB-0153	Window Frame	1
2	BAC-CA-PB-0156	Rectangular Window	1
3	BAC-CA-PB-0161	Cabinet Window Seal	2
4	BAC-CA-PB-0390	570 X 220 Window Cover	1
5	BAC-GL-PB-0003	10" Ø Cabinet Rubber Gloves	1 pr
6	BAC-CA-PB-0157	Cabinet Entry Ring	2
7	BAC-CA-PB-0155	Cabinet Floor Mesh	1
8	BAC-CA-PB-0086	Foot Valve Spring Return	1
9	YAC-CA-PB-0219	Door Interlock Valve	1
10	BAC-CA-PB-0158	Air Entry Filter	2
11	YAC-CA-PB-0145	1/4" Blow Off Gun	2
12	YAC-CA-PB-0440	Door Latch	1
13	YAC-FN-PB-0041	Toggle Catch	4
14	BAC-DC-PB-0007	Pulse Valve	1
15	BAC-DF-PB-0002	Filter Cartridge - Size 2	1
16	BAC-DC-PB-0031	Hanger Rod	1
17	YAC-CA-PB-0146	Handle	4
18	YAC-CA-PB-0205	Handle Tongue	4
19	BAC-CA-PB-0117	PB500/PB1000 Hopper-Screen Detail	1
20	BAC-PF-PB-0008	38 mm (1-1/2") Ball Valve	1
21	BAC-CA-0406-00	Dust Collector Door Seal	1
22	BAC-CA-0386-02	Cyclone Assembly	1
23	BAC-CA-0595-00	Recovery Hose	1
24	BAC-BG-PB-0056	Delta-M Gun GDF 1/8 X 1/4 Assembly	1
25	BAC-AF-PB-0164	Air Hose 10 mm 250 PSI Impact Blue	1.5 m
26	BAC-CA-PB-0220	Feed Tee Assembly	1
27	BAC-PF-PB-0021	10 mm (3/8") Ball Valve	1
28	BAC-AF-PB-0048	9.5 mm 3/8" Filter Regulator With Gauge	1
29	BAC-RC-PB-0142	Sola 5 Inlet Valve Sub Assembly	1
30	YAC-PF-PB-0026	PVC Ball Valve	1
31	YAC-FN-PB-0056	Hose Clamp	2
32	BAC-CA-0587-00	Abrasives Hose	1
33	YAC-PF-PB-0125	1/4" NB Air Hose	1.5 m
34	YAC-FN-PB-0263	O-Clip	2
35	BAC-CA-PB-0164	Cabinet Door Seal	1
36	YAC-CA-PB-0184	Fan Impellor - 240cfm Aluminium	1
37	YAC-CA-0472-00	0.55kw 3 Phase AC Motor	1
38	YAC-CA-0477-00	Grommet	1
39	BAC-CA-PB-0423	16 mm Grommet	1
40	BAC-CA-PB-0135	Rubber Sealing Grommet	1
41	YAC-CA-PB-0160	Hinge	2

Technical Data



- **Optional Turntable Load:**
250 kg (551 lbs)
- **Internal Size:**
900 mm (35") Wide 783 mm (31") Deep
730 mm (29") High
- **Door Size:**
645 mm (25") Wide 730 mm (29") High
- **Air Consumption:**
36 m³/hr (21cfm) @ 550 kPa (80psi)
- **Suction Gun / Nozzle Size:**
BAC-BG-PB-0056 Delta Manual Gun 1/8" x 1/4"
- **Cabinet Light:**
2 x 18Watt 230V 50Hz
- **Cabinet Overall Dimension:**
1200 mm (48") Wide 1360 mm (54") Deep
2220 mm (88") High
- **Recommended Floor Area:**
2300 mm (91") Wide 2300 mm (91") Deep
- **Window Size:**
600 mm (24") Wide 250 mm (10") High
- **Air Supply Line:**
10 mm (3/8")
- **Electrical Power:**
0.55Kw (0.75hp) 415VAC 50Hz 2 Pole 3 Phase

