



## Plana II Valve Assembly



Western Australia 232 Collier Road Bayswater WA 6053 Tel: 08 9208 2000 Fax: 08 9208 2099 Abrasilflex Pty Ltd	Victoria 82 Logis Boulevard Dandenong Sth 3175 Tel: 03 9565 5100 Fax: 03 9565 5199 ABN 42 065 145 888	Queensland 1/22 French Avenue Brendale Qld 4500 Tel: 07 3293 7000 Fax: 07 3293 7099	New South Wales 28 Bryant Street Padstow NSW 2211 Tel: 02 8708 5150 Fax: 02 8708 5195	South Australia 25 Wing Street Wingfield SA 5013 Tel: 08 8345 7700 Fax: 08 8345 7799
---	--	---	---	--

PO Box 2133, Rockingham DC, WA 6967  
Tel: 08 94199 9100 Fax: 089 9419 9199



### Product Features

The PanBlast™ Plana II BSP Valve Assembly delivers the precision and simplicity of the original Plana valve, with upgrades to extend valve life and improve performance. The BSP version is intended for use with most non-US blasting equipment.

- ▶ 45° Design minimizes internal wear.
- ▶ Robust SG iron housing.
- ▶ Single stainless steel metering plate.
- ▶ Mineral and metallic abrasive capable.
- ▶ Tubular handle.
- ▶ Improved metering plate stem seals.
- ▶ Nylon wiper seals to prevent jamming.
- ▶ Cleanout, inspection, drain and pressurization ports.
- ▶ Service kits available for simple maintenance.

### Common Applications

- ▶ On site industrial and commercial blasting.
- ▶ Blast and painting contractor yard work.
- ▶ Blast room applications.
- ▶ In situ blasting in shipyards and slipways.

## Complementary Products



Couplings & Nozzle Holders



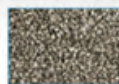
Blast Nozzles



Whip Checks



Blast Hoses



Steel Grit



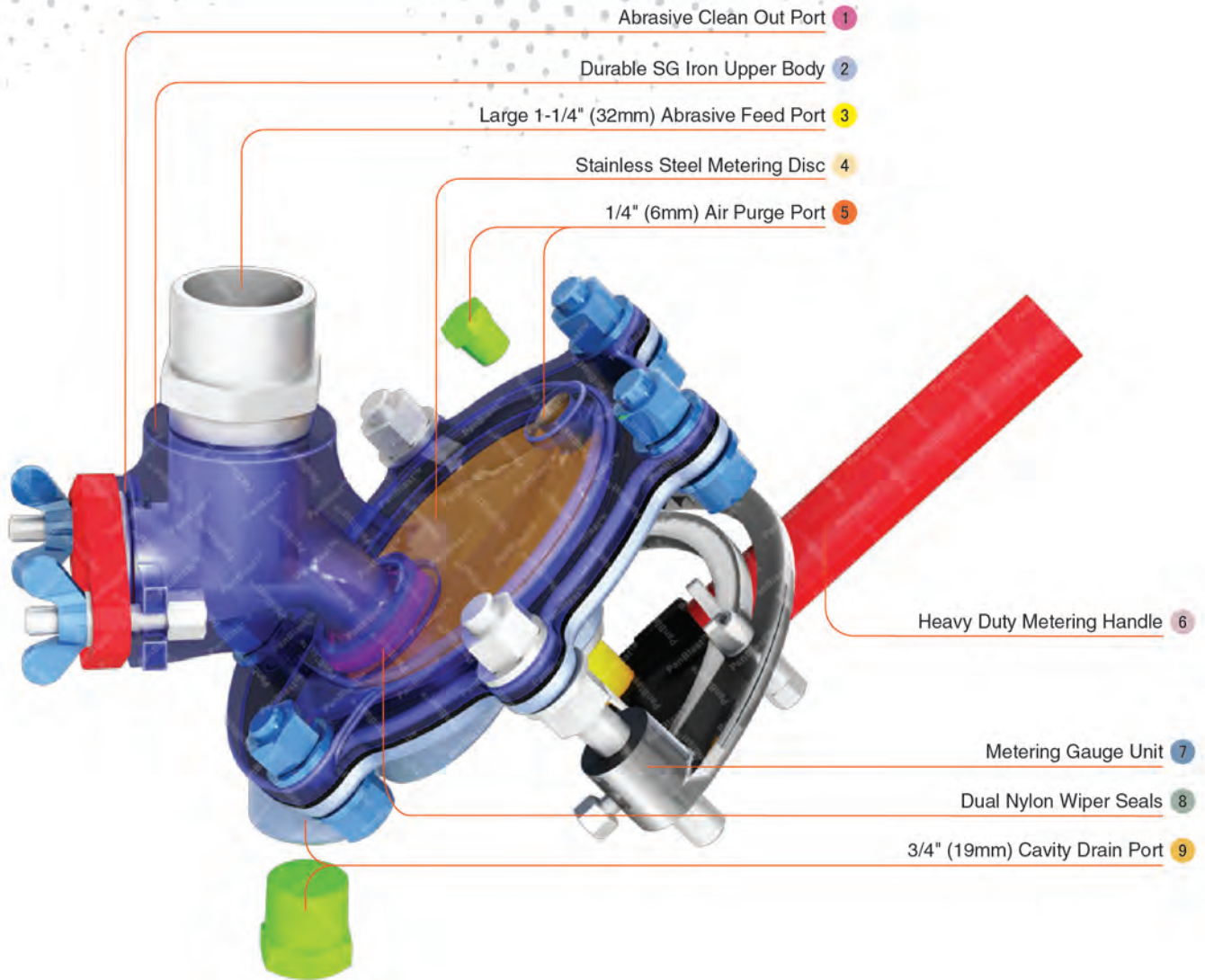
Garnet



Steel Shot



Aluminium Oxide



Abrasive Clean Out Port 1

Durable SG Iron Upper Body 2

Large 1-1/4" (32mm) Abrasive Feed Port 3

Stainless Steel Metering Disc 4

1/4" (6mm) Air Purge Port 5

Heavy Duty Metering Handle 6

Metering Gauge Unit 7

Dual Nylon Wiper Seals 8

3/4" (19mm) Cavity Drain Port 9

## Component Highlights



1 Abrasive Clean Out Port

4 Stainless Steel Metering Disc

7 Metering Gauge Unit

2 Durable SG Iron Upper Body

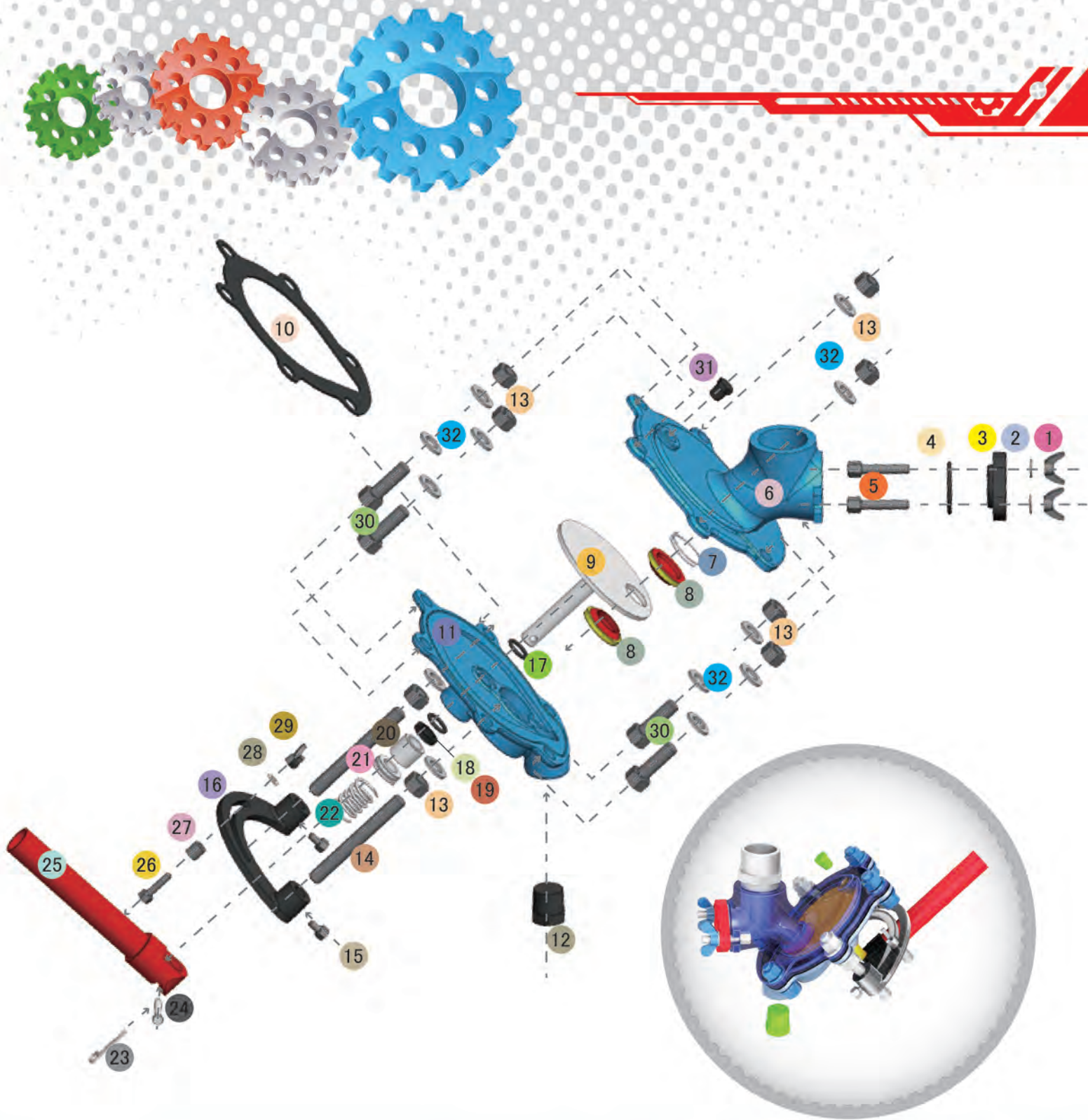
5 1/4" (6mm) Air Purge Port

8 Dual Nylon Wiper Seals

3 Large 1-1/4" (32mm) Abrasive Feed Port

6 Heavy Duty Metering Handle

9 3/4" (19mm) Cavity Drain Port



## Assembly

Stock Code	Description	Weight
BAC-VA-0318-00	Plana II Valve Assembly	5.40kg (11.90lbs)

## Service Kits

Stock Code	Description	Include Items
BAC-VA-0031-02	Plana II Valve Service Kit	9 10 17 x3 18 19 20 21 22
BAC-VA-0328-00	Plana II Valve Wiper Seal Kit	7 8 x2
BAC-VA-0032-01	Plana II Valve Handle Kit	15 x2 16 23 24 25 26 27 28 29
BAC-VA-0033-01	Plana II Valve Fittings Kit	1 x2 2 x2 3 4 5 x2 12 13 x8 14 x2 30 x4 31



All data and information subject to change without prior notice. Brochure reference CAT-0703-03-00



## Parts List



Description	Qty	Description	Qty	Description	Qty
1 Wing Nut	2	12 Plug	1	23 R-Split Pin	1
2 Flat Washer	2	13 Nut	8	24 Pin	1
3 Inspection Plate	1	14 Stud	2	25 Handle	1
4 O-ring	1	15 Screw	2	26 Screw	1
5 Hex Head Bolt	2	16 Gauge Unit	1	27 Spacer	1
6 Upper Body	1	17 O-ring	3	28 Flat Washer	1
7 Seal Spring	1	18 O-ring	1	29 Wing Nut	1
8 Dust Wiper	2	19 Shaft U Seal	1	30 Hex Head Bolt	4
9 Control Plate	1	20 Packing Gland	1	31 Plug	1
10 Rubber Gasket	1	21 Bush	1	32 Flat Washer	12
11 Lower Body	1	22 Compression Spring	1		