



Pinch Valve NPT Assembly



Product Features

The PanBlast™ Pinch Valve NPT is designed to allow an operator to halt the blasting process without depressurizing the blast pot by isolating flow within the blast hose. The pinch operation provides a simple method of ceasing the blasting operation at the nozzle. The NPT configuration is compatible with most U.S. blasting equipment.

- ▶ Simple piston operation.
- ▶ Cost effective control.
- ▶ Easily activated by a deadman control handle.
- ▶ Plunger guide tubes for consistent travel.
- ▶ NPT supply air connection.

Common Applications

- ▶ Simple, temporary blasting shutoff/startup at the blast nozzle.
- ▶ Economical flow control for blasting operations.

Complementary Products



AirFlo Pneumatic Handle



Blast Hoses



QuikStop IIS Pneumatic Handle



Couplings & Nozzle Holders



AirFlo Electric Handle



Whip Check Cables

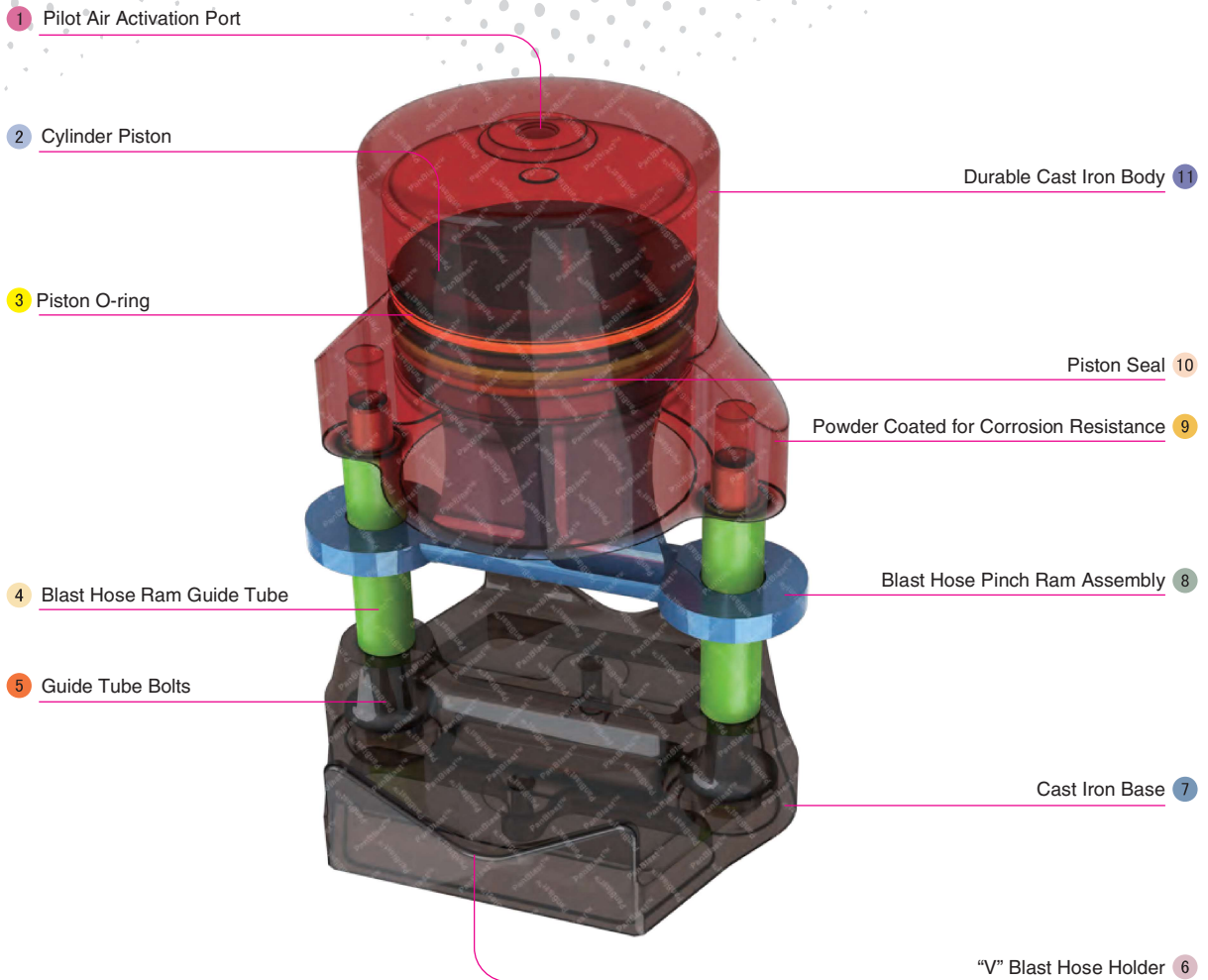


Blast Nozzles



Enviro Valve

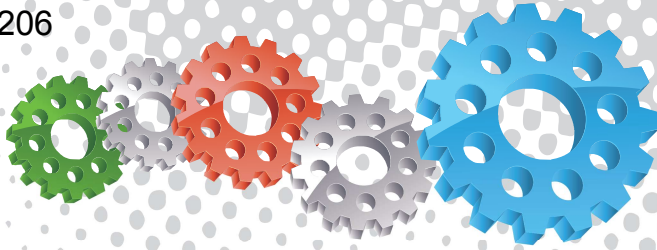
Note:
The Pinch NPT Valve is not a fail-safe blast pot control system and should not be used for unattended shutoff.



Component Highlights



- | | | |
|-----------------------------|---------------------------------|------------------------------------------|
| 1 Pilot Air Activation Port | 5 Guide Tube Bolts | 9 Powder Coated for Corrosion Resistance |
| 2 Cylinder Piston | 6 "V" Blast Hose Holder | 10 Piston Seal |
| 3 Piston O-ring | 7 Cast Iron Base | 11 Durable Cast Iron Body |
| 4 Blast Hose Ram Guide Tube | 8 Blast Hose Pinch Ram Assembly | |



Assembly

Stock Code	Description	Weight
BAC-RC-0188-02	Pinch Valve Assembly	5.15 kg (11.33 lbs)



All data and information subject to change without prior notice. Brochure reference CAT-0204-01-01



Parts List



Description	Qty	Description	Qty	Description	Qty
1 Body	1	4 Seal	1	7 Flat Washer	2
2 Piston	1	5 Guide Tube	2	8 Hex Head Bolt	2
3 O-ring	1	6 Base	1		