



## Plana Valve Assembly



### Product Features

The PanBlast™ Plana Abrasive Metering Valve provides precise metering of abrasive from the blast pot to the hose, resulting in less waste. The unique design permits smooth abrasive flow for less wear and longer valve life. The BSP version is intended for use with most non-US blasting equipment.

- ▶ 45° Design minimizes internal wear.
- ▶ Stainless steel metering plates – 1 fixed, 1 movable.
- ▶ Quick release drain out port.
- ▶ Service kits available for simple maintenance.

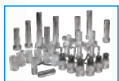
### Common Applications

- ▶ On site industrial and commercial blasting.
- ▶ Blast and painting contractor yard work.
- ▶ Blast room applications.
- ▶ In situ blasting in shipyards and slipways.

### Complementary Products



Couplings & Nozzle Holders



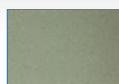
Blast Nozzles



Whip Check Cables



Blast Hoses



Glass Beads



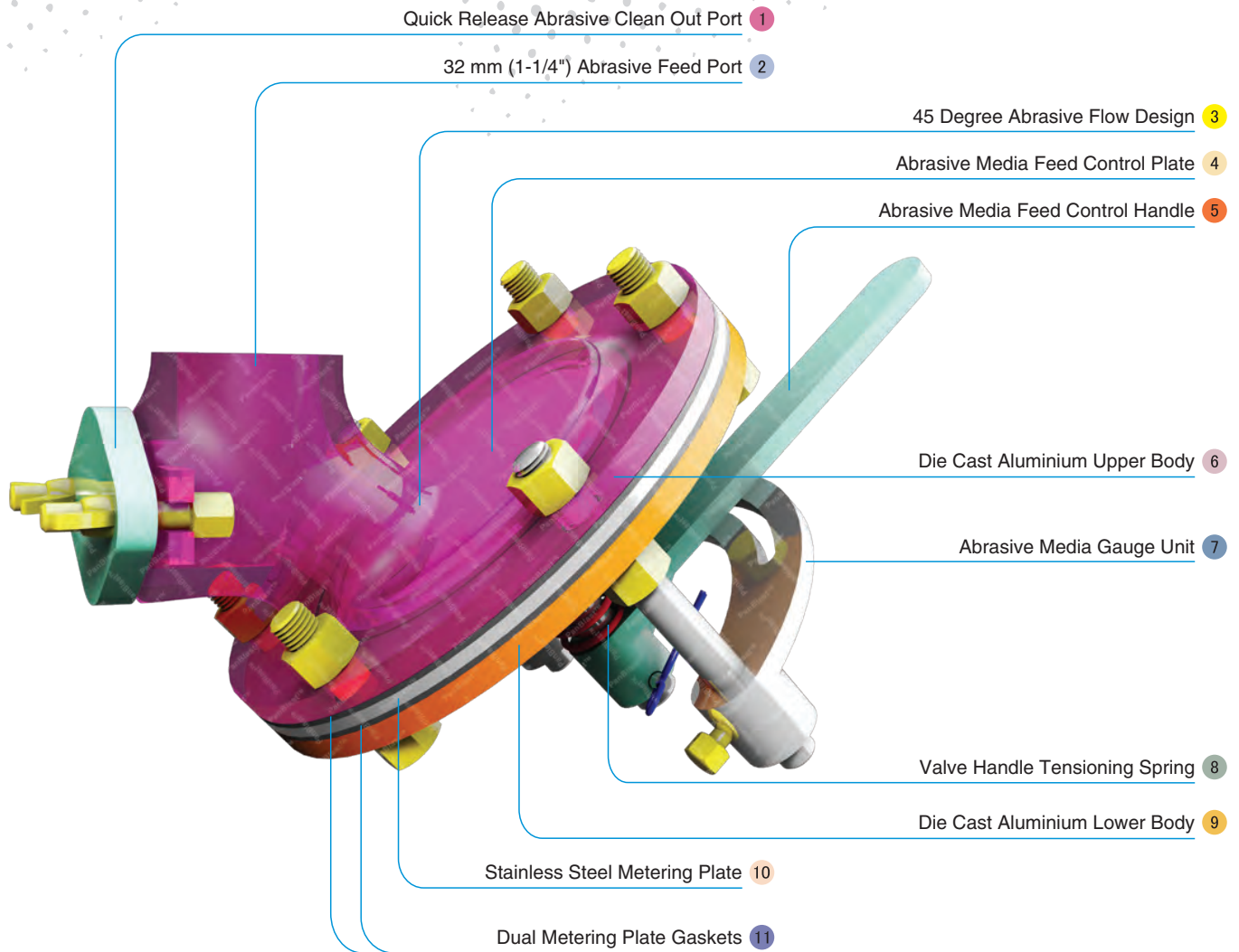
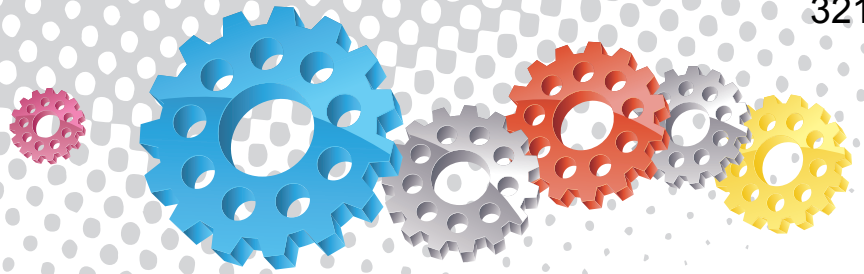
Garnet



Plastic Media



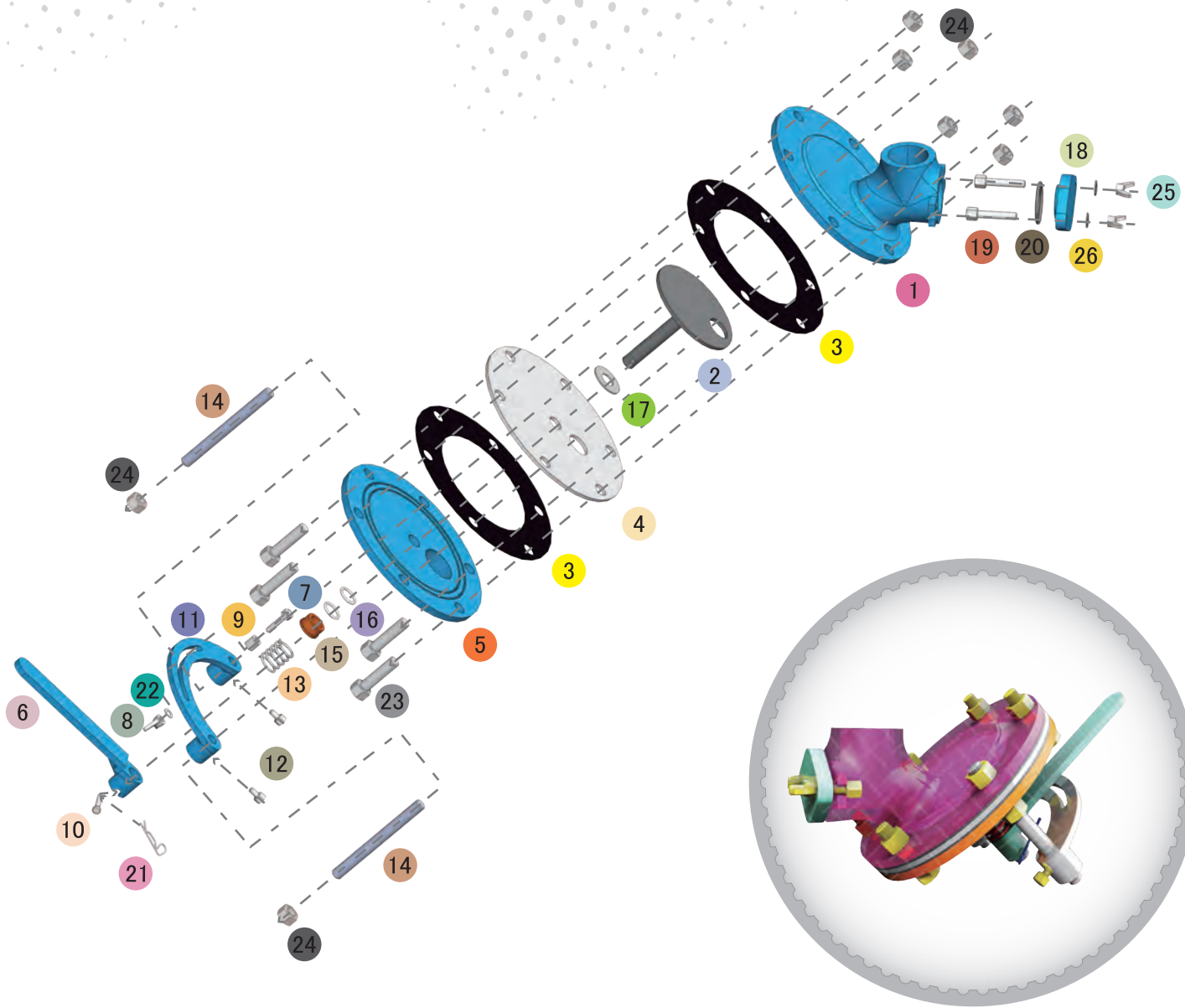
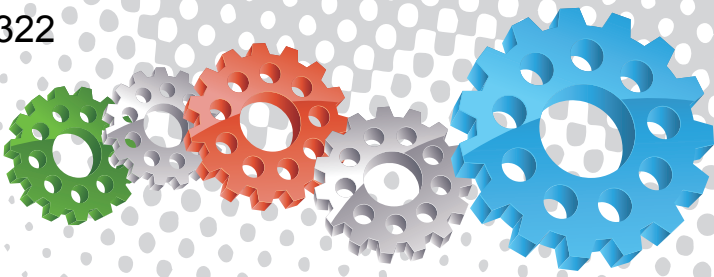
Aluminium Oxide



## Component Highlights



- |   |                                      |                                   |
|---|--------------------------------------|-----------------------------------|
| 1 Quick Release Abrasive Clean Out Port | 5 Abrasive Media Feed Control Handle | 9 Die Cast Aluminium Lower Body   |
| 2 32 mm (1-1/4") Abrasive Feed Port     | 6 Die Cast Aluminium Upper Body      | 10 Stainless Steel Metering Plate |
| 3 45 Degree Abrasive Flow Design        | 7 Abrasive Media Gauge Unit          | 11 Dual Metering Plate Gaskets    |
| 4 Abrasive Media Feed Control Plate     | 8 Valve Handle Tensioning Spring     |                                   |



## Assembly

Stock Code	Description	Weight
BAC-VA-PB-0034	Plana Valve Assembly	6.25 kg (13.78 lbs)

## Service Kits

Stock Code	Description	Include Items
BAC-VA-PB-0031	Plana Valve Service Kit	2 3 x2 4 13 15 16 x2 17
BAC-VA-0401-00	Plana Valve Handle Kit	6 7 8 9 10 11 12 x2 21 22
BAC-VA-PB-0033	Plana Valve Fittings Kit	14 x2 18 19 x2 20 23 x4 24 x8 25 x2 26 x2



All data and information subject to change without prior notice. Brochure reference CAT-0703-02-01



## Parts List



Description	Qty	Description	Qty	Description	Qty
1 Upper Body	1	10 Handle Pin	1	19 Hex Head Bolt	2
2 Control Plate	1	11 Gauge Unit	1	20 O-ring	1
3 Rubber Gasket	2	12 Screw	2	21 BCP-1 Locking Pin	1
4 Stainless Steel Disc	1	13 Spring	1	22 Flat Washer	1
5 Lower Body	1	14 Stud	2	23 Hex Head Bolt	4
6 Handle	1	15 Packing Gland	1	24 Nut	8
7 Screw	1	16 O-ring	2	25 Wing Nut	2
8 Wing Nut	1	17 Shaft Gasket	1	26 Flat Washer	2
9 Gauge Unit Spacer	1	18 Inspection Plate	1		