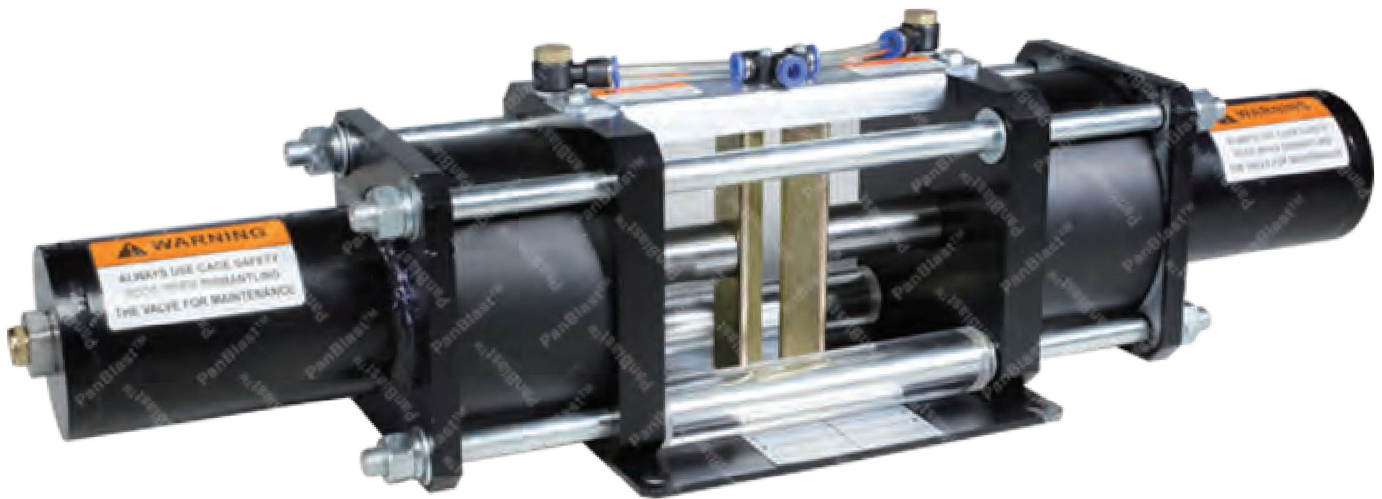




Safe-T-Pinch Valve Assembly



Product Features

The PanBlast™ Safe-T-Pinch Valve is a pneumatically operated normally closed horizontally configured pinch valve, combining dual pinch rams to pinch the blast hose via a piloted air signal to start and stop the abrasive blasting process.

- ▶ Fail safe normally closed system.
- ▶ Wear dispersion dual pinch rams.
- ▶ Accommodates all blast hose sizes.
- ▶ Encapsulated pinch ram chamber.

Common Applications

- ▶ General abrasive blasting operations.
- ▶ Multi-operator large site blasting projects.
- ▶ Shipyard manufacturing & repair yards.
- ▶ Oil & gas plant shut down maintenance.

Complementary Products



AirFlo Pneumatic Handle



Blast Hoses



QuikStop IIS Pneumatic Handle



AirStop II Electric Handle



Fina II Valve



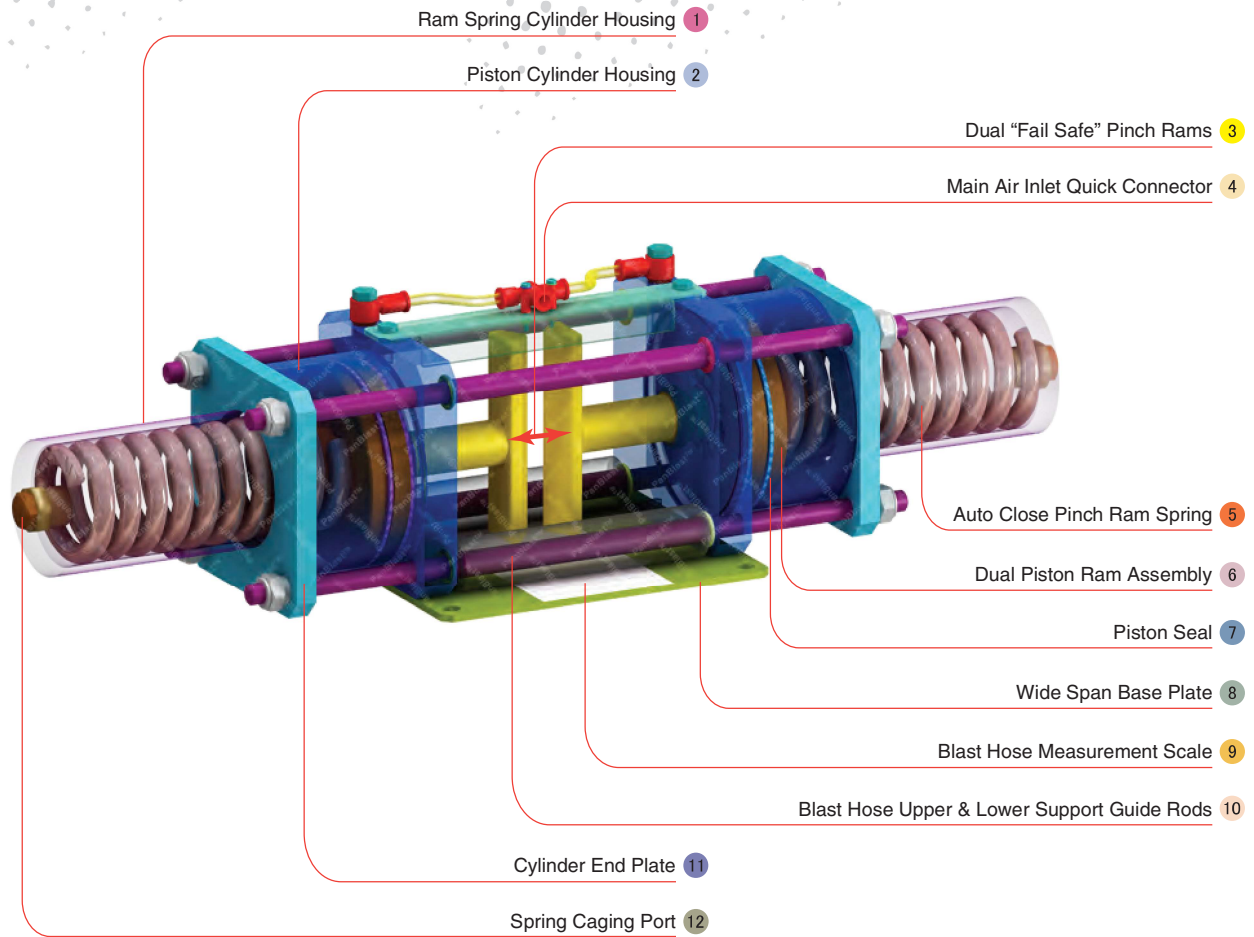
Tandem Inlet Valve



Electric Remote Systems



Kombi II Remote Valve



Component Highlights



1 Ram Spring Cylinder Housing

5 Auto Close Pinch Ram Spring

9 Blast Hose Measurement Scale

2 Piston Cylinder Housing

6 Dual Piston Ram Assembly

10 Blast Hose Upper & Lower Support Guide Rods

3 Dual "Fail Safe" Pinch Rams

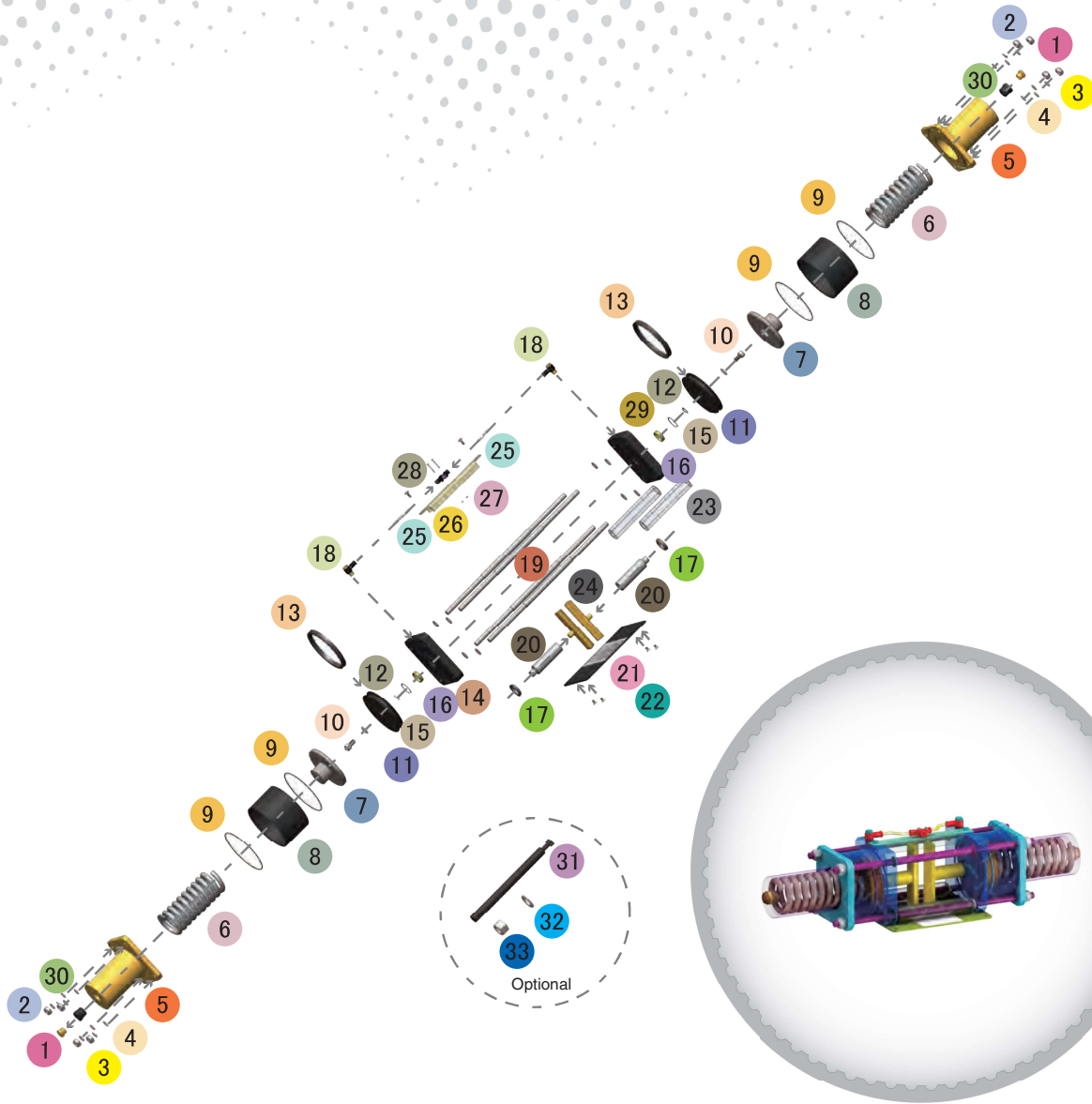
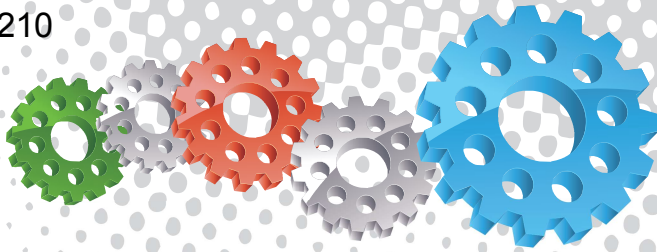
7 Piston Seal

11 Cylinder End Plate

4 Main Air Inlet Quick Connector

8 Wide Span Base Plate

12 Spring Caging Port



Assembly

Stock Code	Description	Weight
BAC-RC-0565-00	Safe-T-Pinch Valve Assembly	19 kg (41.89 lbs)

Optional Accessories

Stock Code	Description	Include Items
YAC-RC-0588-00	Spring Cage Stud	31
YAC-FN-0396-00	Flat Washer	32
YAC-FN-0395-00	Nut	33
YAC-RC-0598-00	Spring Maintenance Kit	31 x2 32 x2 33 x2



LIKE US ON FACEBOOK
www.facebook.com/panblast

FOLLOW US ON TWITTER
Ask ACEI@PanBlast

500 FIND US ON 500PX
500px.com/panblast

All data and information subject to change without prior notice. Brochure reference CAT-0204-02-00



Parts List



Description	Qty	Description	Qty	Description	Qty
1 1/4" Brass Filter	2	11 Piston	2	21 Support Plate	1
2 Nut	8	12 O-ring	2	22 Label-Scale Sticker	2
3 Spring Washer	8	13 Piston U Seal	2	23 Acrylic Tube	2
4 Flat Washer	16	14 Mount Plate A	1	24 Ram	2
5 End Cap	2	15 Circlip	2	25 6 mm OD x 3.5 mm ID Air Tube	0.2 m
6 Outer Spring	2	16 Guide Bush	2	26 Guide Plate	1
7 Spring Retainer	2	17 Shaft Dust Seal	2	27 Lock Nut	2
8 Cylinder	2	18 1/4" Elbow Tube Connector SPH1/4-02	2	28 6 mm 'T' Type 3-Ways Tube Connector SPE6	1
9 O-ring	4	19 Retain Bar	4	29 Mount Plate B	1
10 Screw	2	20 Shaft	2	30 Reducing Bush	2