



Sola 10 NPT Inlet Valve Assembly



Product Features

The PanBlast™ Sola 10 NPT Inlet Valve Assembly is an air actuated inlet control valve, designed for use in conjunction with the PanBlast™ HiFlo Exhaust Control Valve or similar device. The NPT configuration is compatible with most U.S. blasting equipment.

- ▶ Simple, rugged construction.
- ▶ Normally closed operation.
- ▶ Interchangeable with OEM valves.
- ▶ Quick, easy disassembly.
- ▶ Service kits available.
- ▶ 25 mm (1") NPT threaded connection.

Common Applications

- ▶ Remote supply air control for medium capacity blast pots
- ▶ Replacement and upgrade of OEM valves.

Complementary Products



HiFlo Exhaust Valve



AbraFlo Abrasive Trap



QuikStop IIS Pneumatic Handle



Moisture Separator



AirFlo Pneumatic Handle



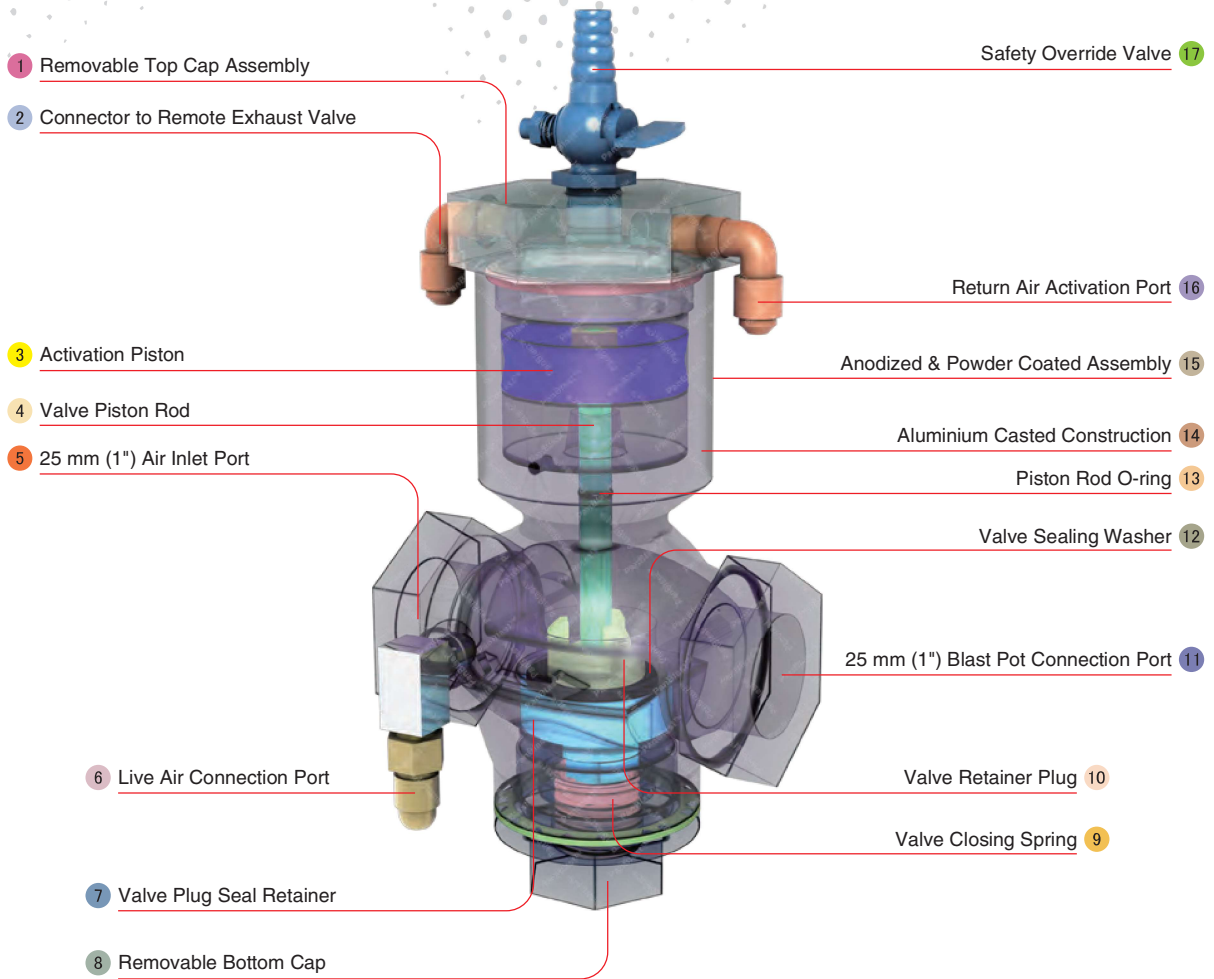
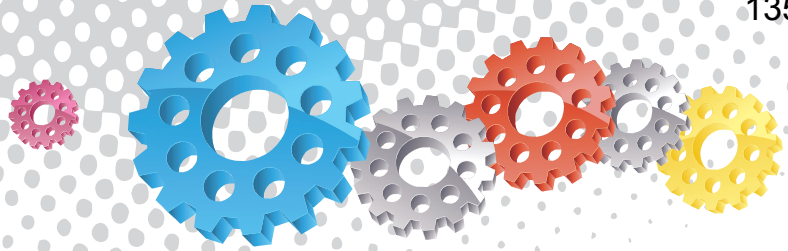
AirFlo Electric Handle



Twinline Hose



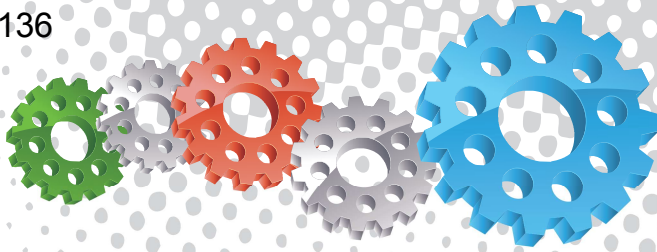
Pop Up Valves



Component Highlights



- | | | |
|-------------------------------------|---|--------------------------------------|
| 1 Removable Top Cap Assembly | 7 Valve Plug Seal Retainer | 13 Piston Rod O-ring |
| 2 Connector to Remote Exhaust Valve | 8 Removable Bottom Cap | 14 Aluminium Casted Construction |
| 3 Activation Piston | 9 Valve Closing Spring | 15 Anodized & Powder Coated Assembly |
| 4 Valve Piston Rod | 10 Valve Retainer Plug | 16 Return Air Activation Port |
| 5 25 mm (1") Air Inlet Port | 11 25 mm (1") Blast Pot Connection Port | 17 Safety Override Valve |
| 6 Live Air Connection Port | 12 Valve Sealing Washer | |



Assembly

Stock Code	Description	Weight
BAC-RC-0208-03	Sola10 NPT Inlet Valve Assembly	1.03 kg (2.27 lbs)

Service Kit

Stock Code	Description	Include Items
BAC-RC-0257-01	Sola10 Inlet Service Kit	2 3 5 6 10 14



All data and information subject to change without prior notice. Brochure reference CAT-0201-07-00



Parts List



Description	Qty	Description	Qty	Description	Qty
1 Bottom Cap	1	7 NPT/UNF Nipple - Restricted	1	13 Nut	1
2 Bottom Cap Gasket	1	8 Elbow -NPT	1	14 O-ring	1
3 Inner Spring	1	9 Body	1	15 Cap	1
4 Valve Plug	1	10 O-ring	1	16 Elbow	2
5 Plug Washer	1	11 Piston Rod	1	17 Pet Cock - NPT	1
6 Retainer Plug	1	12 Rubber Piston	1		