



Sola 30 NPT Inlet Valve Assembly



Product Features

The PanBlast™ Sola 30 NPT Inlet Valve Assembly is an air actuated inlet control valve, designed for use in conjunction with the PanBlast™ HiFlo Exhaust Control Valve or similar device. The NPT configuration is compatible with most U.S. blasting equipment.

- ▶ Simple, rugged construction.
- ▶ Normally closed operation.
- ▶ Interchangeable with OEM valves.
- ▶ Quick, easy disassembly.
- ▶ Service kits available.
- ▶ 38 mm (1-1/2") NPT threaded connection.

Common Applications

- ▶ Remote supply air control for medium capacity blast pots
- ▶ Replacement and upgrade of OEM valves.

Complementary Products



HiFlo Exhaust Valve



AbraFlo Abrasive Trap



QuikStop IIS Pneumatic Handle



Moisture Separator



AirFlo Pneumatic Handle



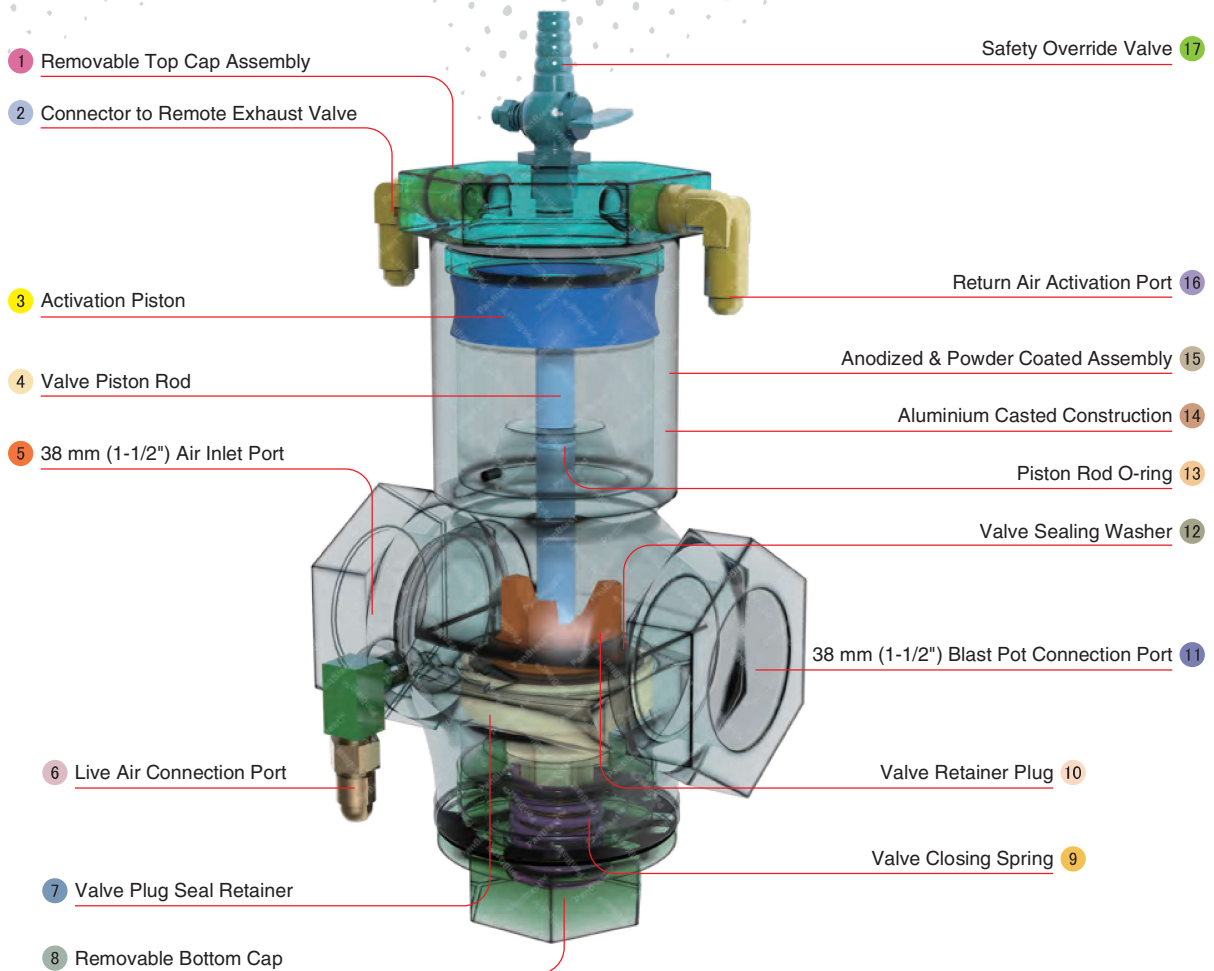
AirFlo Electric Handle



Twinline Hose



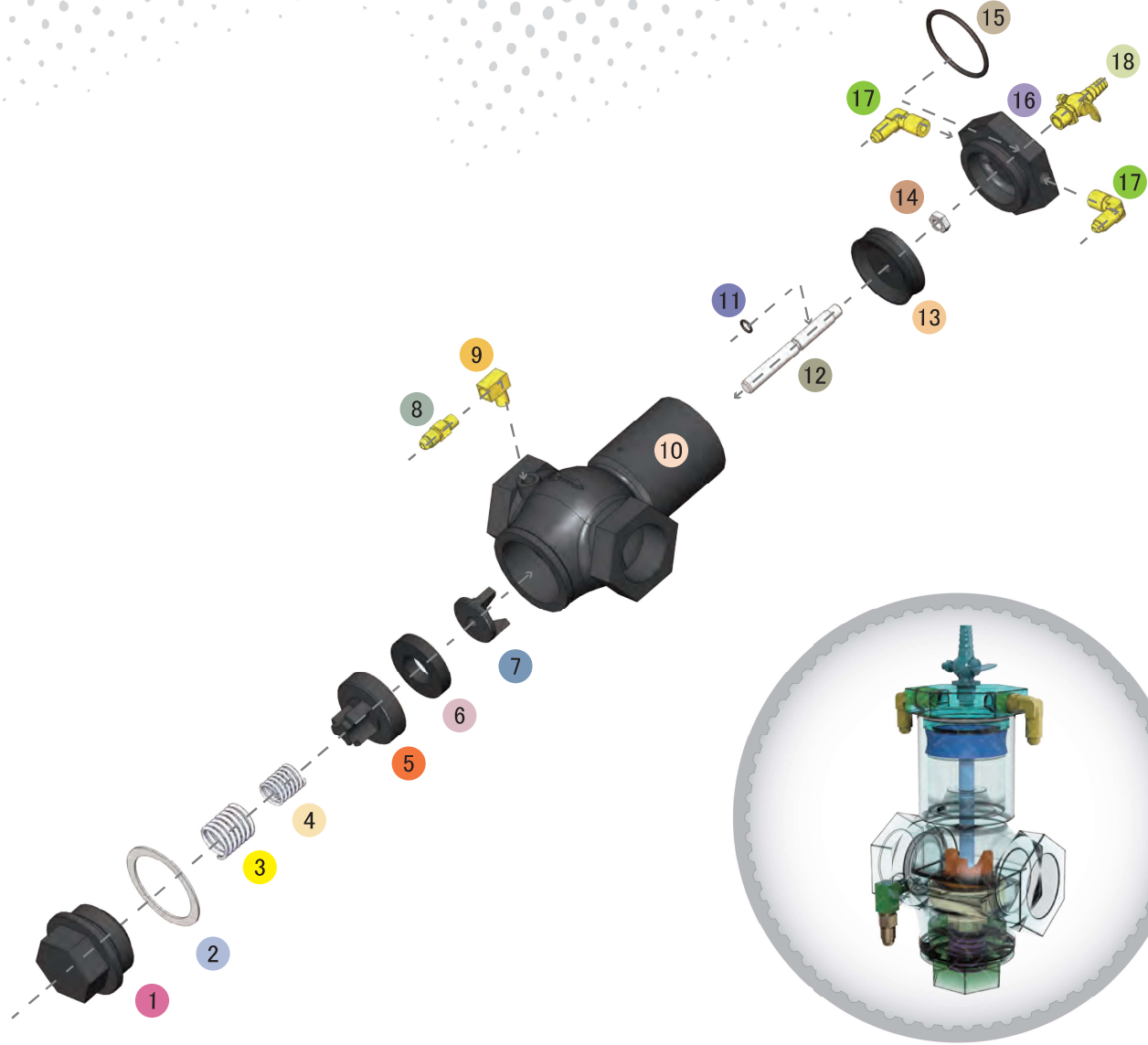
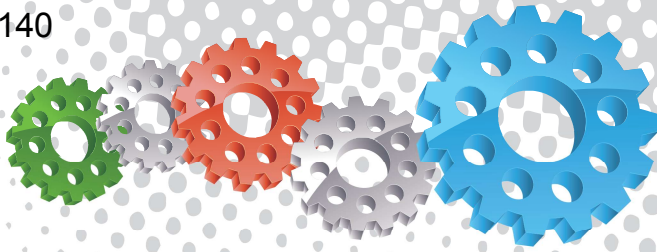
Pop Up Valves



Component Highlights



- | | | |
|-------------------------------------|---|--------------------------------------|
| 1 Removable Top Cap Assembly | 7 Valve Plug Seal Retainer | 13 Piston Rod O-ring |
| 2 Connector to Remote Exhaust Valve | 8 Removable Bottom Cap | 14 Aluminium Casted Construction |
| 3 Activation Piston | 9 Valve Closing Spring | 15 Anodized & Powder Coated Assembly |
| 4 Valve Piston Rod | 10 Valve Retainer Plug | 16 Return Air Activation Port |
| 5 38 mm (1-1/2") Air Inlet Port | 11 38 mm (1-1/2") Blast Pot Connection Port | 17 Safety Override Valve |
| 6 Live Air Connection Port | 12 Valve Sealing Washer | |



Assembly

Stock Code	Description	Weight
BAC-RC-PB-0221	Sola 30 NPT Inlet Valve Assembly	1.96 kg (4.31 lbs)

Service Kits

Stock Code	Description	Include Items
BAC-RC-PB-0258	Sola 30 NPT Inlet Valve Service Kit	2, 3, 4, 6, 7, 11, 15
BAC-RC-PB-0355	Sola 30 Piston Kit	11, 12, 13, 14



All data and information subject to change without prior notice. Brochure reference CAT-0201-08-00



Parts List



Description	Qty	Description	Qty	Description	Qty
1 Bottom Cap	1	7 Retainer Plug	1	13 Rubber Piston	1
2 Bottom Cap Gasket	1	8 NPT/UNF Nipple - Restricted	1	14 Nut	1
3 Outer Spring	1	9 Elbow - NPT	1	15 O-ring	1
4 Inner Spring	1	10 Body	1	16 Cap	1
5 Valve Plug	1	11 O-ring	1	17 Elbow	2
6 Plug Washer	1	12 Piston Rod	1	18 Pet Cock - NPT	1