



UniFlo Valve Assembly With Fittings



Product Features

The PanBlast™ UniFlo BSP Remote Control Valve is an air operated inlet/outlet valve, used in conjunction with the AirFlo Remote Control Handle to control the blast pot supply air and exhaust. The BSP configuration is designed to connect with non-U.S. blasting equipment.

- ▶ Normally-closed inlet.
- ▶ Simultaneous inlet/outlet operation.
- ▶ One-piece design for easy installation.
- ▶ Service kits available.
- ▶ 32 mm (1-1/4") BSP threads.

Common Applications

- ▶ On site industrial and commercial blasting.
- ▶ Blast and painting contractor yard work.
- ▶ Blast room applications.
- ▶ In situ blasting in shipyards and slipways.

Complementary Products



AirFlo Pneumatic Handle



Twinline Hose



QuikStop IIS Pneumatic Handle



Moisture Separator



AirFlo Electric Handle



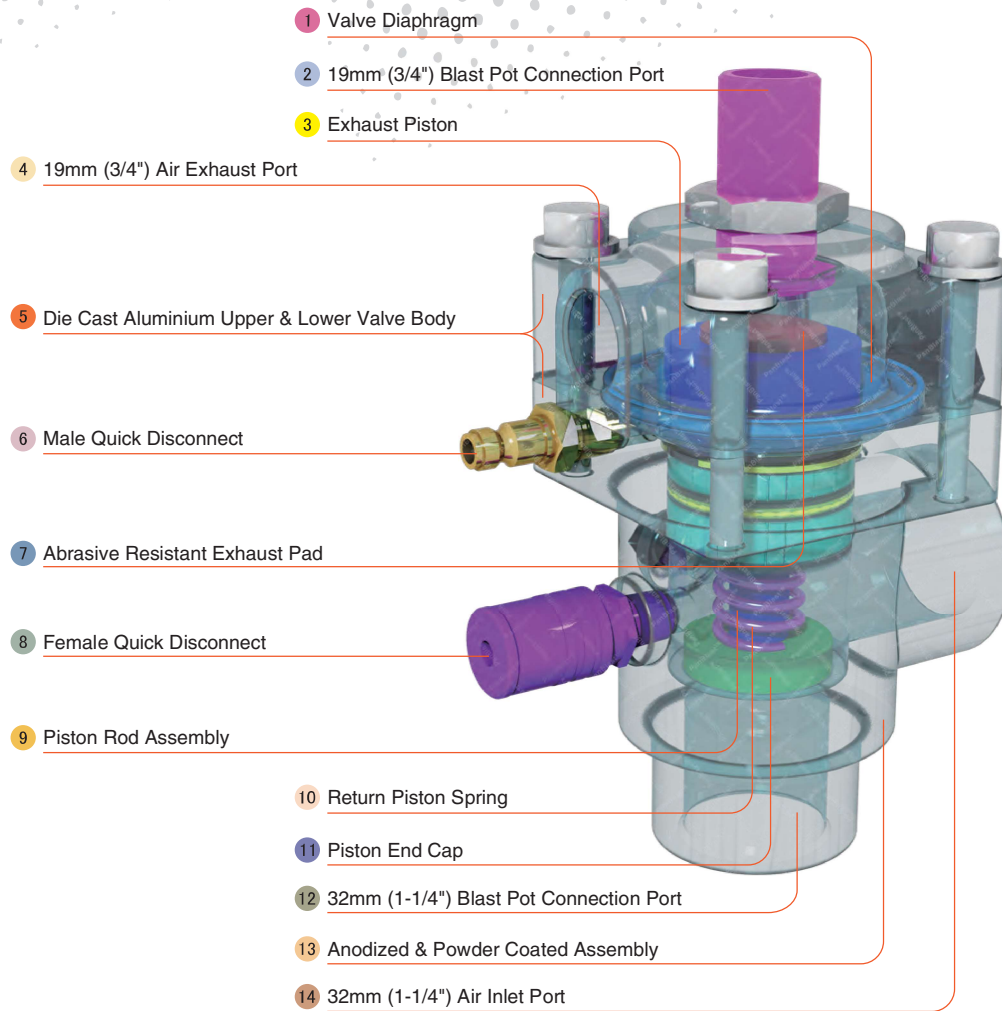
UniFlo Conversion Kit



Exhaust Muffler



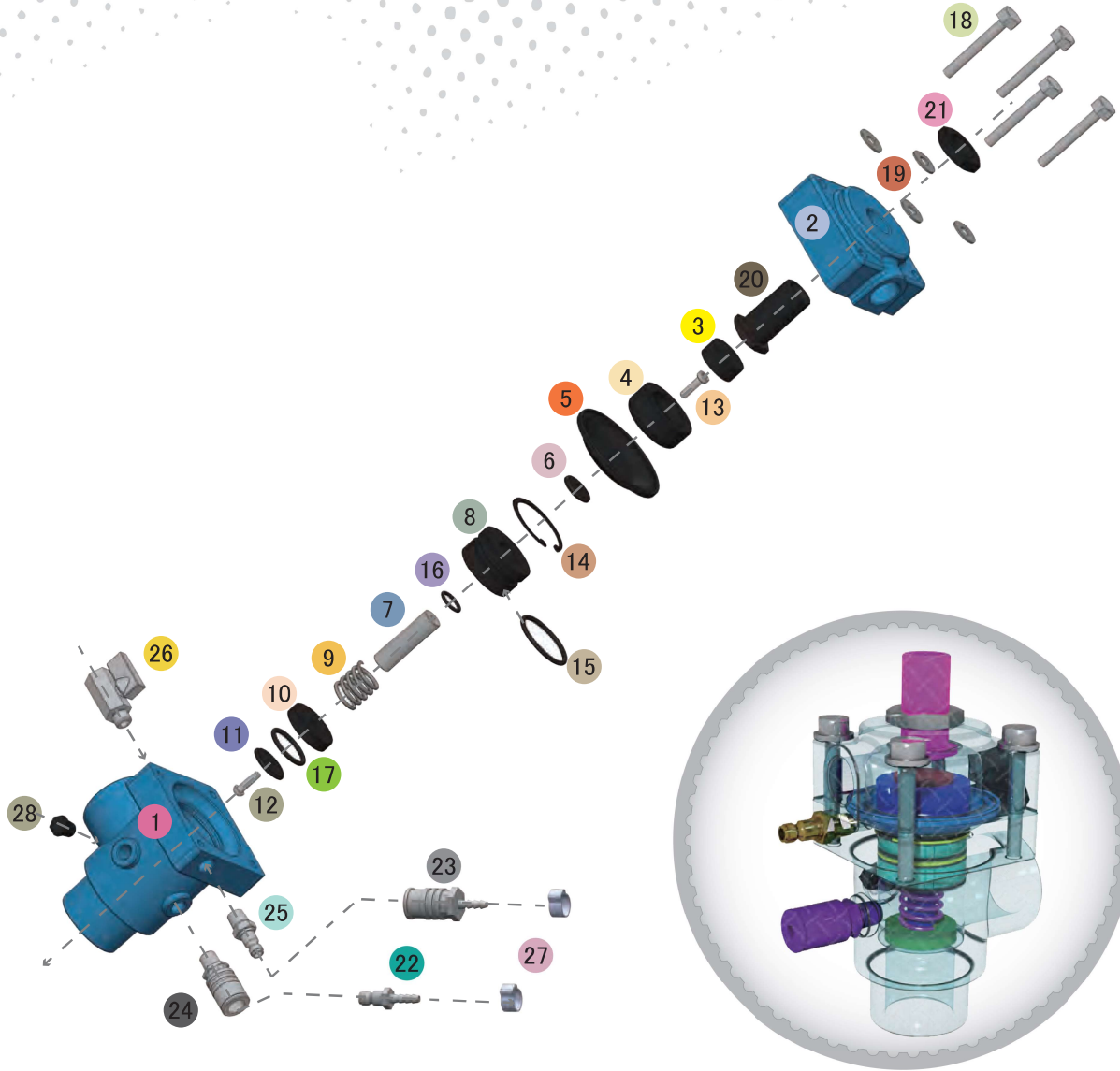
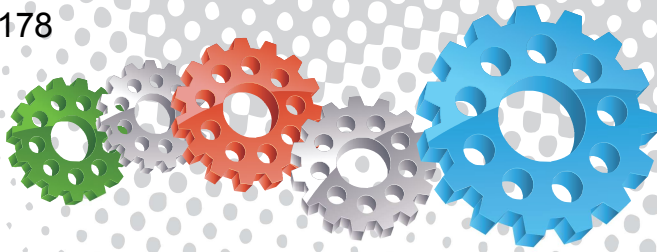
Pop Up Valves



Component Highlights



- | | | |
|-----------------------------------------------|----------------------------------|---------------------------------------------|
| 1 Valve Diaphragm | 6 Male Quick Disconnect | 11 Piston End Cap |
| 2 19 mm (3/4") Blast Pot Connection Port | 7 Abrasive Resistant Exhaust Pad | 12 32 mm (1-1/4") Blast Pot Connection Port |
| 3 Exhaust Piston | 8 Female Quick Disconnect | 13 Anodized & Powder Coated Assembly |
| 4 19 mm (3/4") Air Exhaust Port | 9 Piston Rod Assembly | 14 32 mm (1-1/4") Air Inlet Port |
| 5 Die Cast Aluminium Upper & Lower Valve Body | 10 Return Piston Spring | |



Assembly

| Stock Code | Description | Weight |
|----------------|-------------------------------------|--------------------|
| BAC-RC-PB-0014 | UniFlo Valve Assembly With Fittings | 2.50 kg (5.51 lbs) |

Service Kits

| Stock Code | Description | Include Items |
|----------------|----------------------------|--------------------------------|
| BAC-RC-PB-0092 | UniFlo Seal Kit | 3 5 15 16 17 |
| BAC-RC-PB-0004 | UniFlo Fittings Kit | 20 21 24 25 26 28 |
| BAC-RC-PB-0005 | UniFlo Piston Kit | 4 6 7 8 9 10 11 12 13 14 18 19 |
| BAC-RC-PB-0097 | UniFlo Top End Service Kit | 3 4 5 20 |
| BAC-RC-PB-0098 | UniFlo Exhaust Pad Kit | 3 X 3 |
| BAC-RC-PB-0099 | UniFlo Diaphragm Pad Kit | 5 X 3 |



All data and information subject to change without prior notice. Brochure reference CAT-0203-02-00



Parts List



| Description | Qty | Description | Qty | Description | Qty |
|-------------------|-----|------------------------|-----|------------------------------------|-----|
| 1 Body | 1 | 11 Retaining Disk | 1 | 21 Lock Nut | 1 |
| 2 Exhaust Chamber | 1 | 12 Screw | 1 | 22 Quick Disconnect Fitting Male | 1 |
| 3 Exhaust Pad | 1 | 13 Screw | 1 | 23 Quick Disconnect Fitting Female | 1 |
| 4 Piston | 1 | 14 Circlip | 1 | 24 Quick Disconnect Fitting Female | 1 |
| 5 Diaphragm | 1 | 15 O-Ring | 1 | 25 Quick Disconnect Fitting Male | 1 |
| 6 Backing Washer | 1 | 16 O-Ring | 1 | 26 Mini Ball Valve | 1 |
| 7 Piston Rod | 1 | 17 O-Ring | 1 | 27 Hose Clamp | 2 |
| 8 Bush | 1 | 18 Hex Head Bolt | 4 | 28 Plug | 1 |
| 9 Spring | 1 | 19 Flat Washer | 4 | | |
| 10 Piston End Cap | 1 | 20 Nipple - Customized | 1 | | |