



Wet Head Assembly



Product Features

The PanBlast™ Wet Head Assembly provides a water envelope around the blasting air and abrasive stream, in order to reduce the dust levels generated by the blasting process. Up to 80% of the dust produced may be suppressed by this water envelope.

- ▶ Lightweight, durable nylon construction.
- ▶ Quick attachment via 3 tensioning screws.
- ▶ Operates at standard water line pressures.
- ▶ Connecting hose with flow regulation valve included.

Common Applications

- ▶ Abrasive blasting in populated areas.
- ▶ Masonry and concrete blast cleaning.

Complementary Products



ATN Blast Nozzles



ATV Blast Nozzles



Nylon Nozzle Holders



Aluminum Nozzle Holders



Blast Hoses



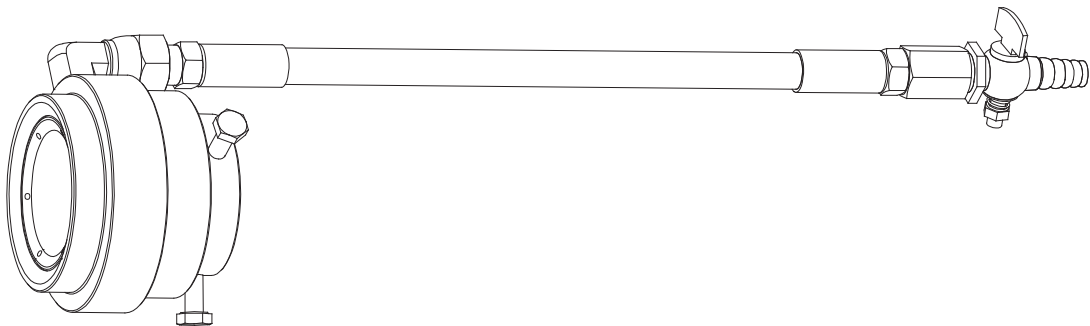
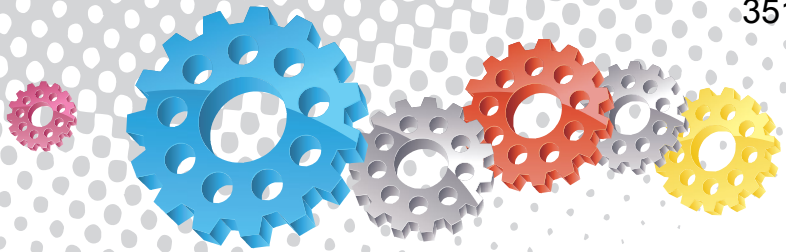
Pressure Blast Pots



AirFlo Pneumatic Handle



QuickStop IIS Pneumatic Handle



Stock Code	Description	Weight
BAC-NZ-PB-0340	Wet Head Assembly	0.36 kg (0.79 lbs)